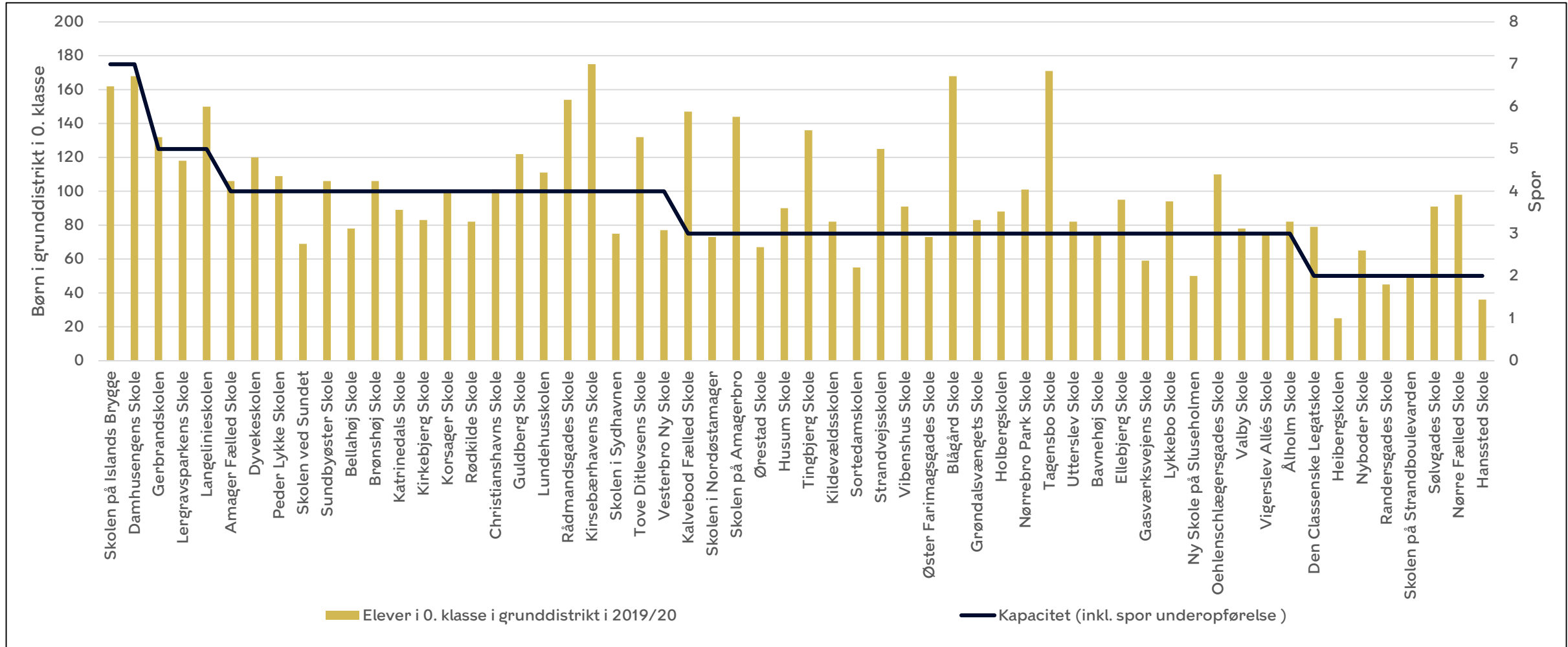


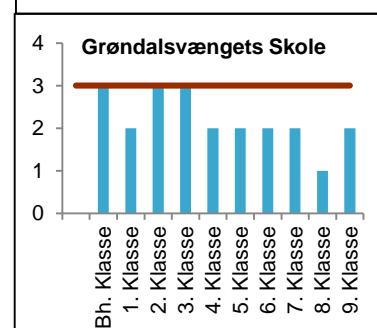
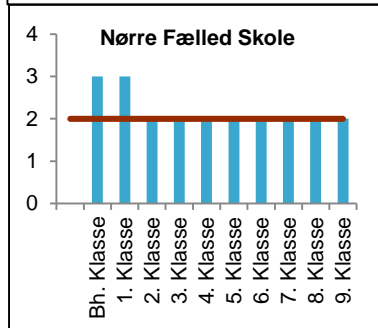
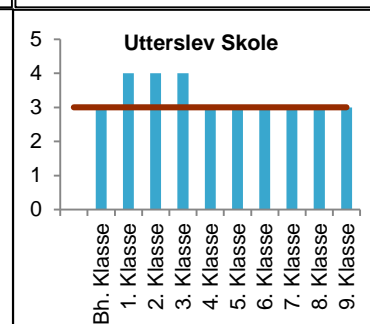
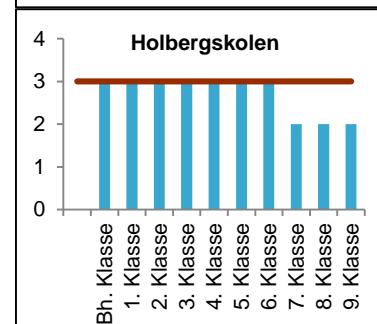
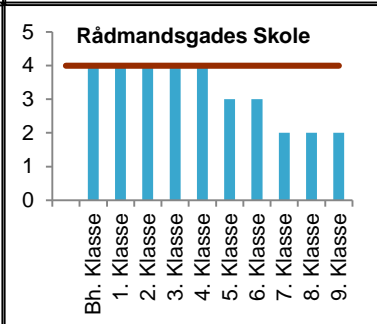
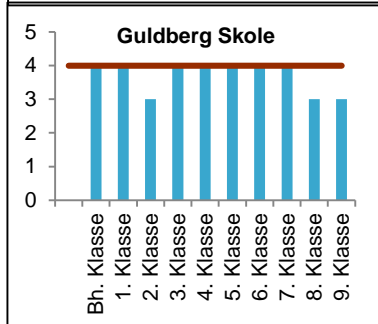
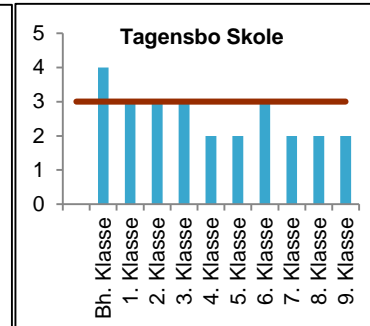
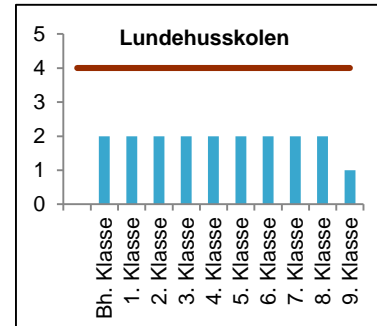
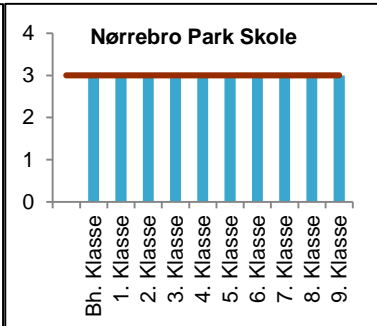
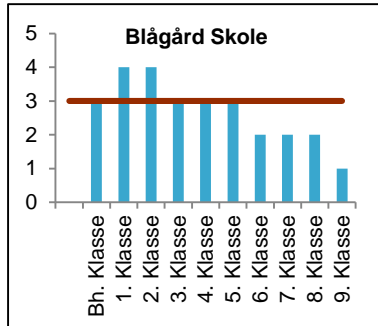
Indskrivning, søgning og størrelse på grunddistrikter



Børn i grunddistrikt og kapacitet

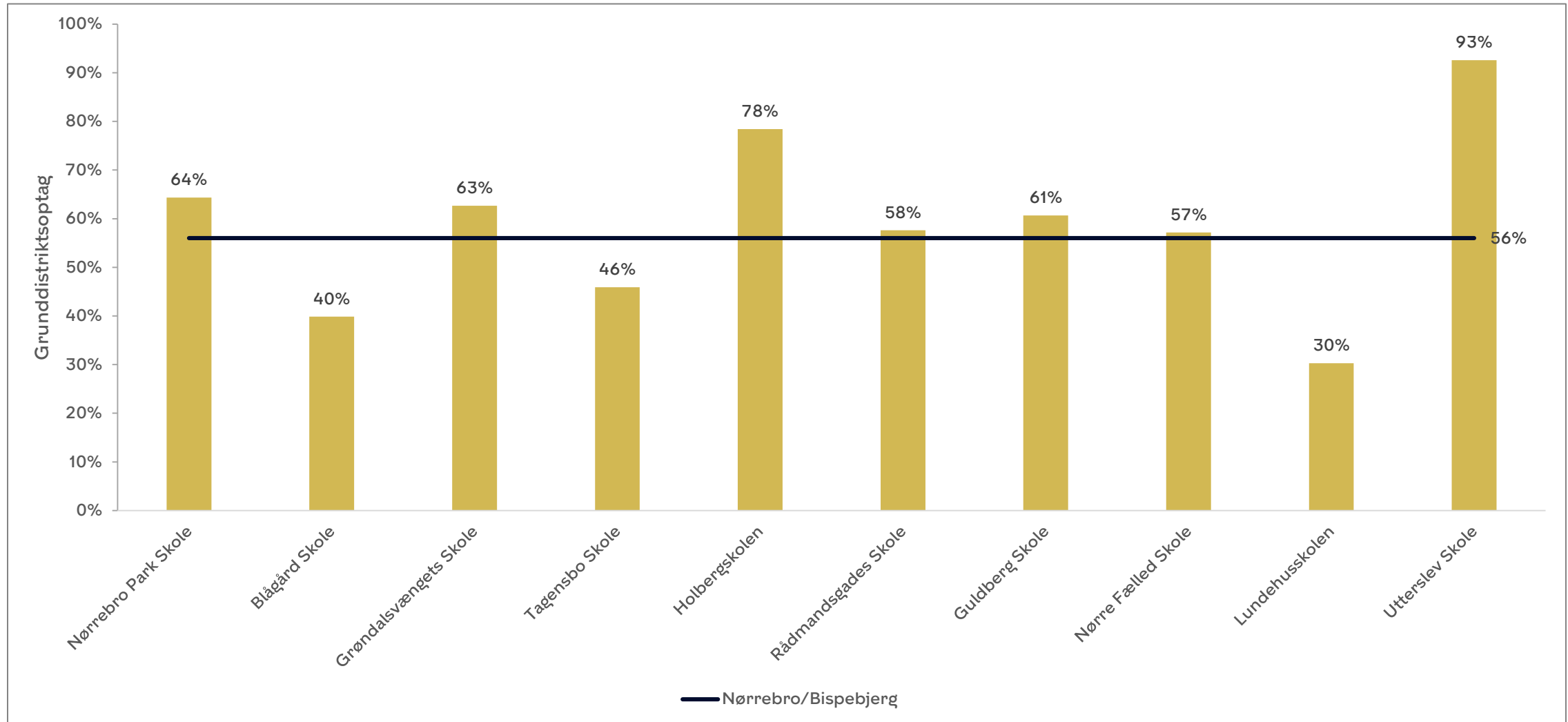


Skolernes indskrivning og kapacitet på Nørrebro-Bispebjerg i 19/20



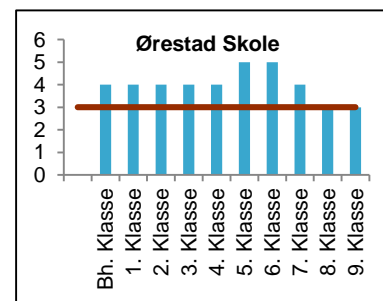
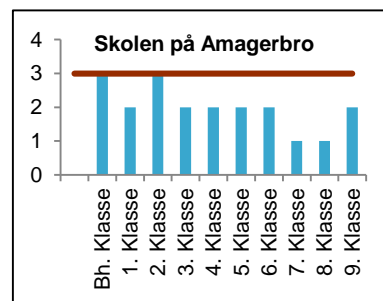
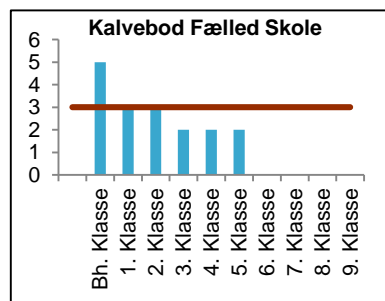
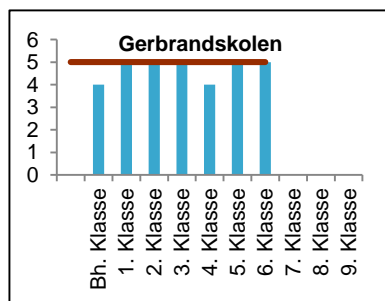
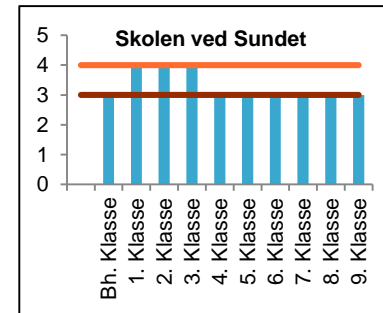
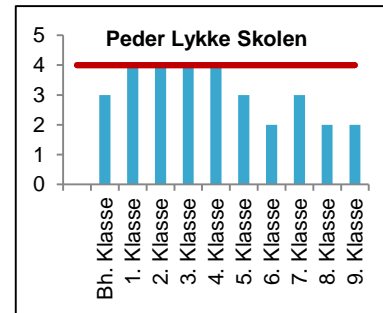
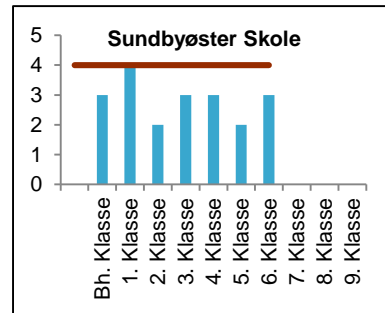
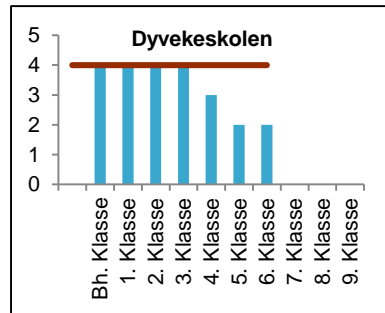
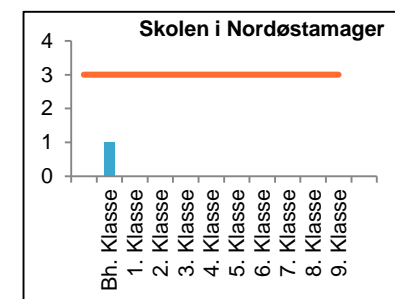
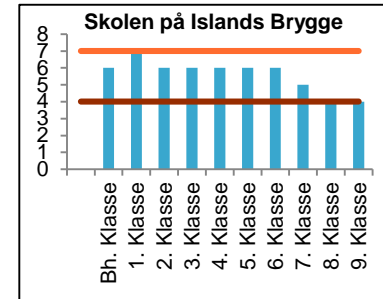
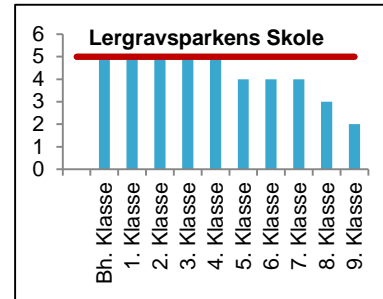
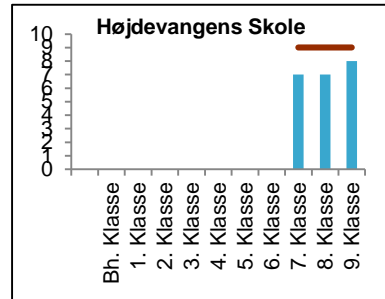
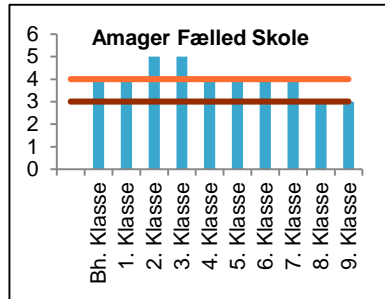
— Nuværende kapacitet

Søgning fra grunddistrikt på Nørrebro/Bispebjerg i 19/20



Grunddistriktoptaget i 2019/2020 for hele København er 61%

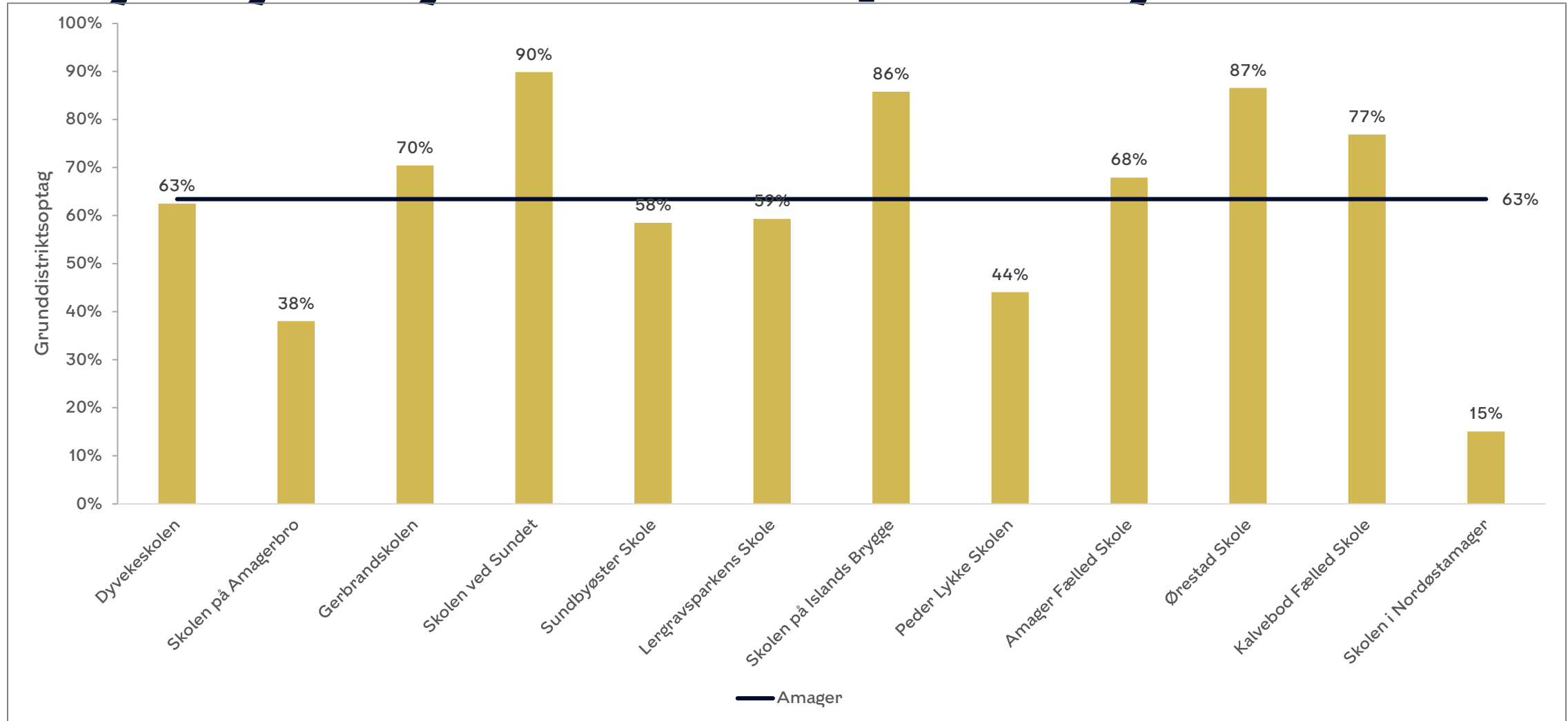
Skolernes indskrivning og kapacitet på Amager i 2019/20



— Kommende kapacitet

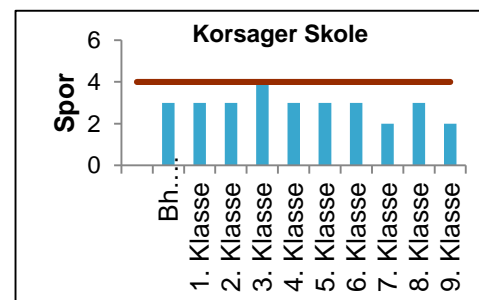
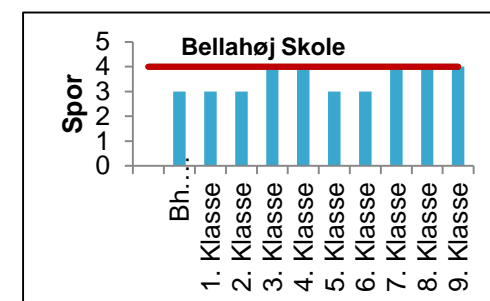
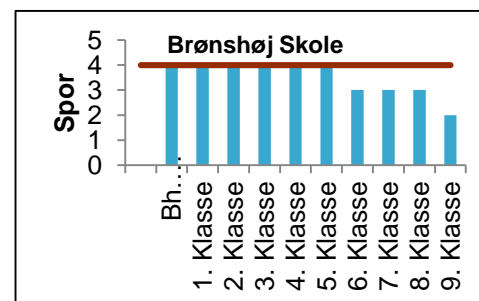
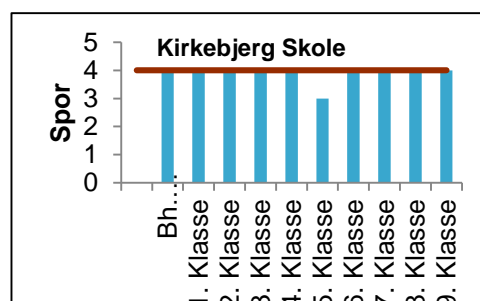
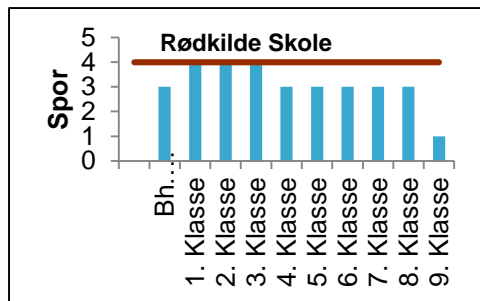
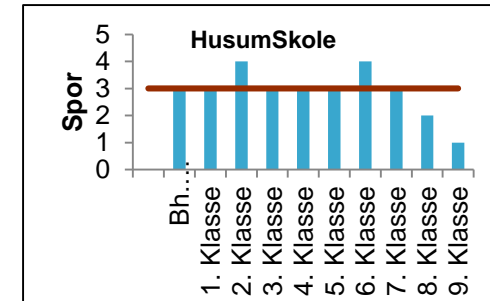
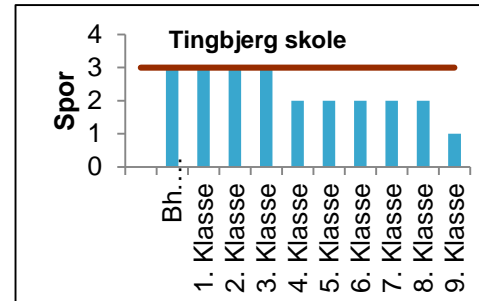
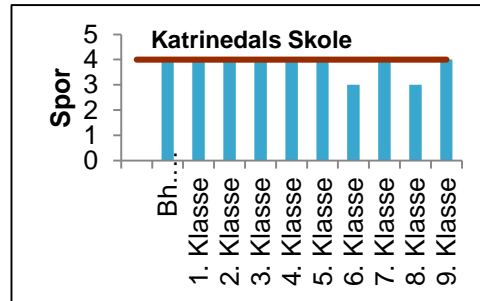
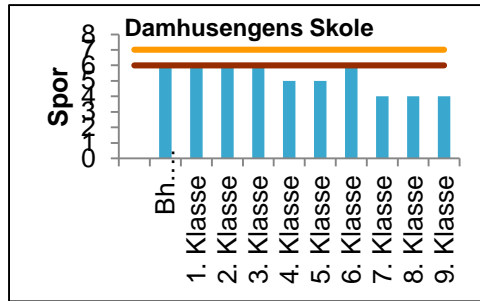
— Nuværende kapacitet



Søgning fra grunddistrikt på Amager i 19/20



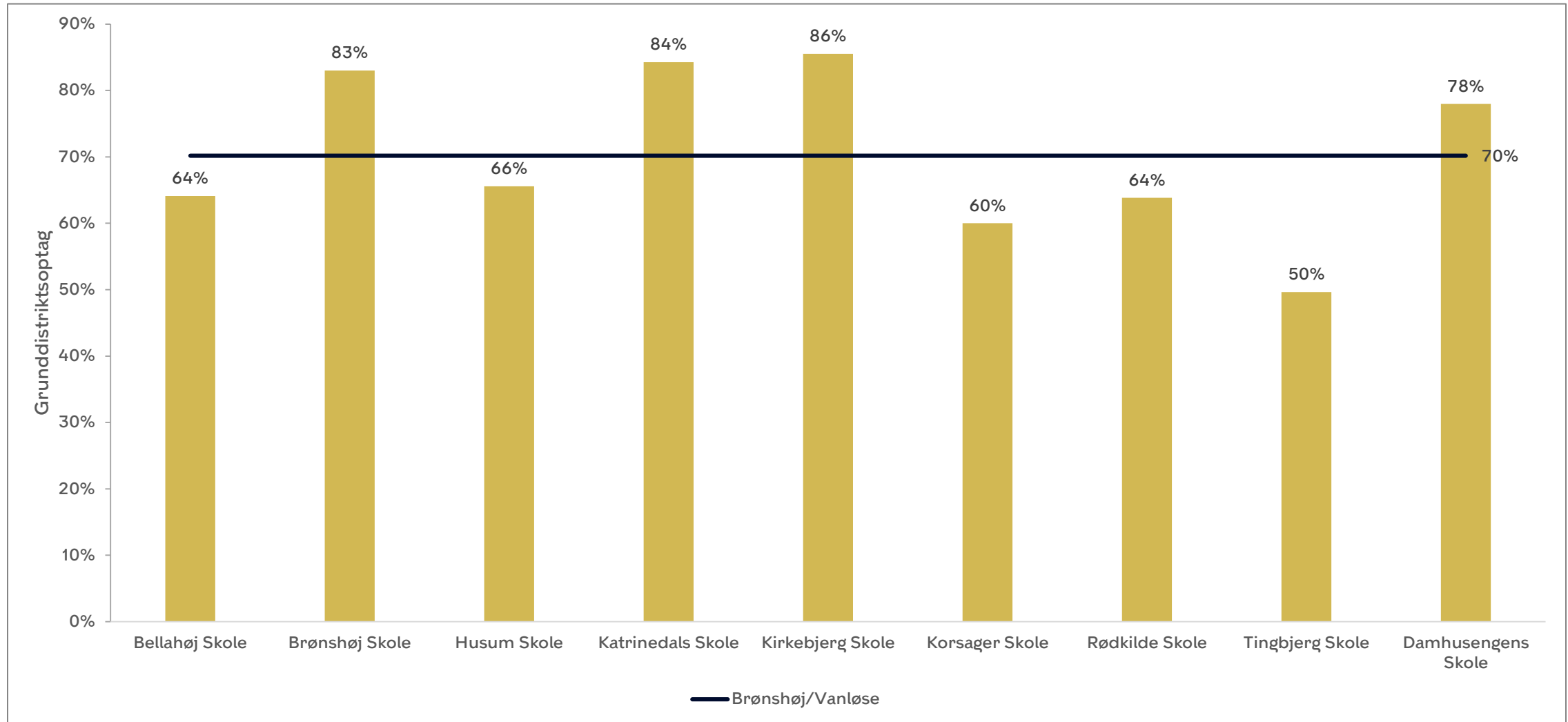
Grunddistriktoptaget i 2019/2020 for hele København er 61%

Skolernes indskrivning og kapacitet i Brønshøj-Vanløse i 2019/20



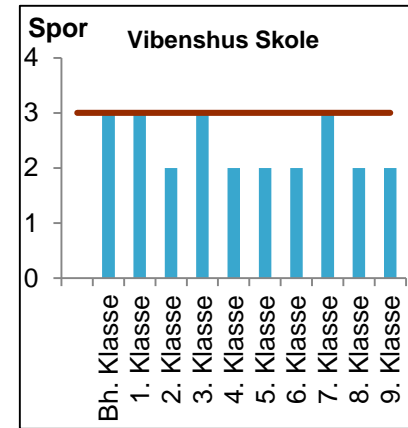
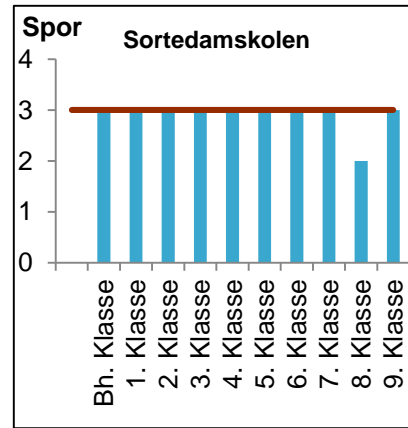
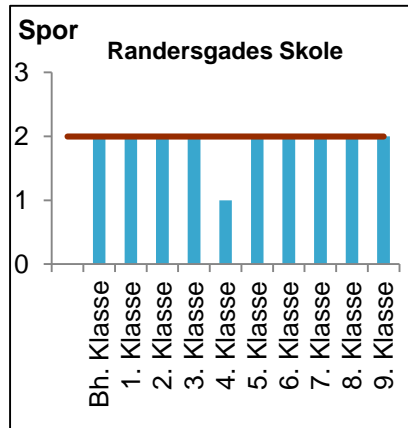
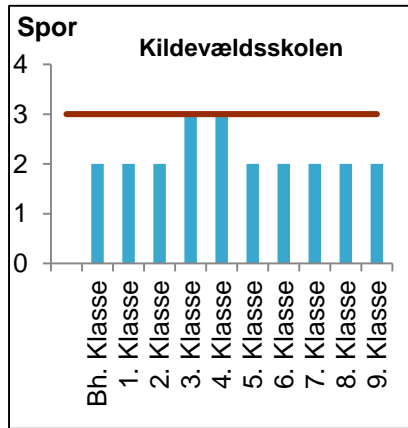
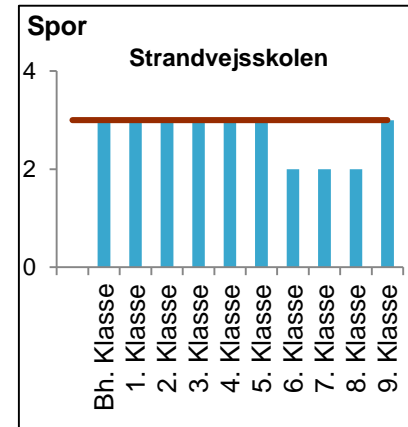
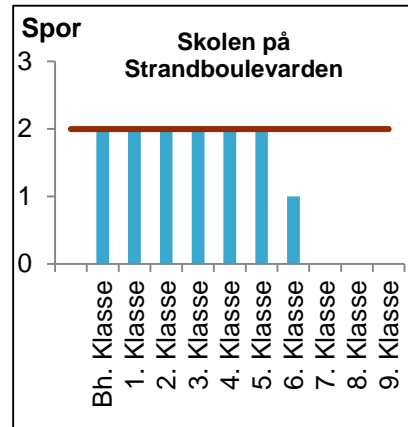
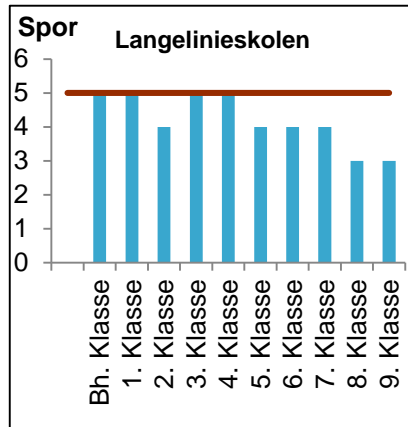
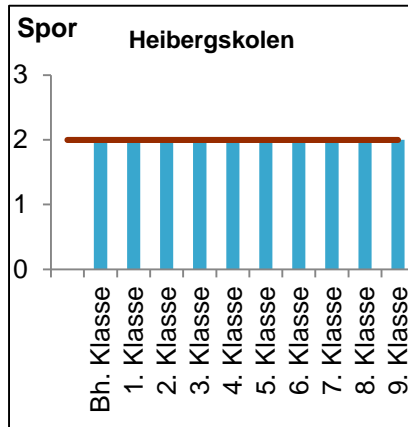
 Kommende kapacitet
 Nuværende kapacitet

Søgning fra grunddistrikt i Brønshøj/Vanløse i 19/20



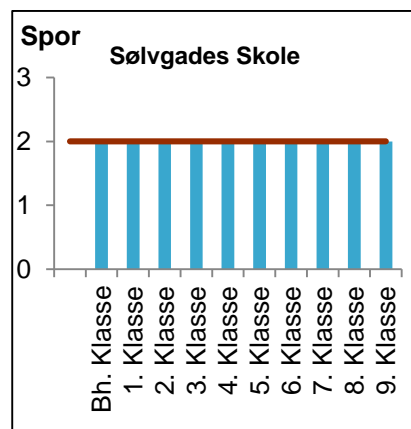
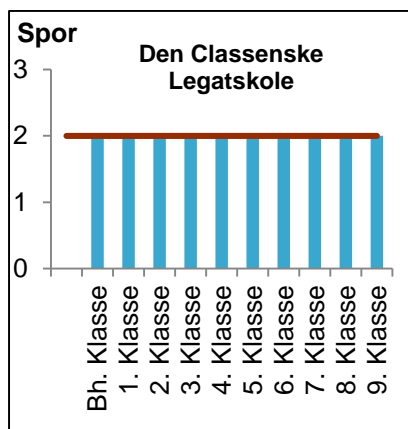
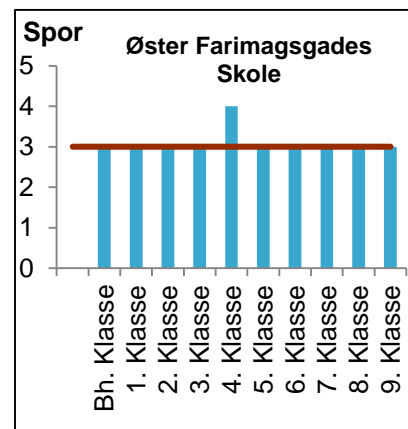
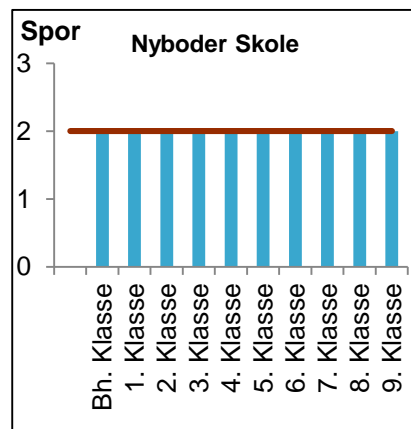
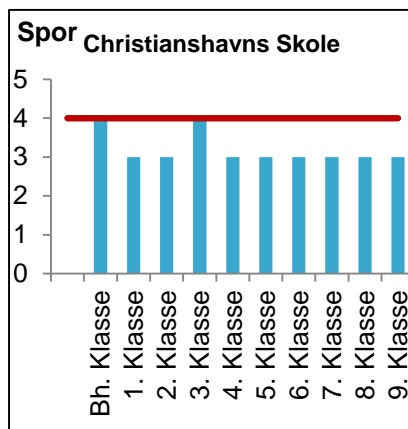
Grunddistriktsoptaget i 2019/2020 for hele København er 61%

Skolernes indskrivning og kapacitet på Østerbro i 2019/20



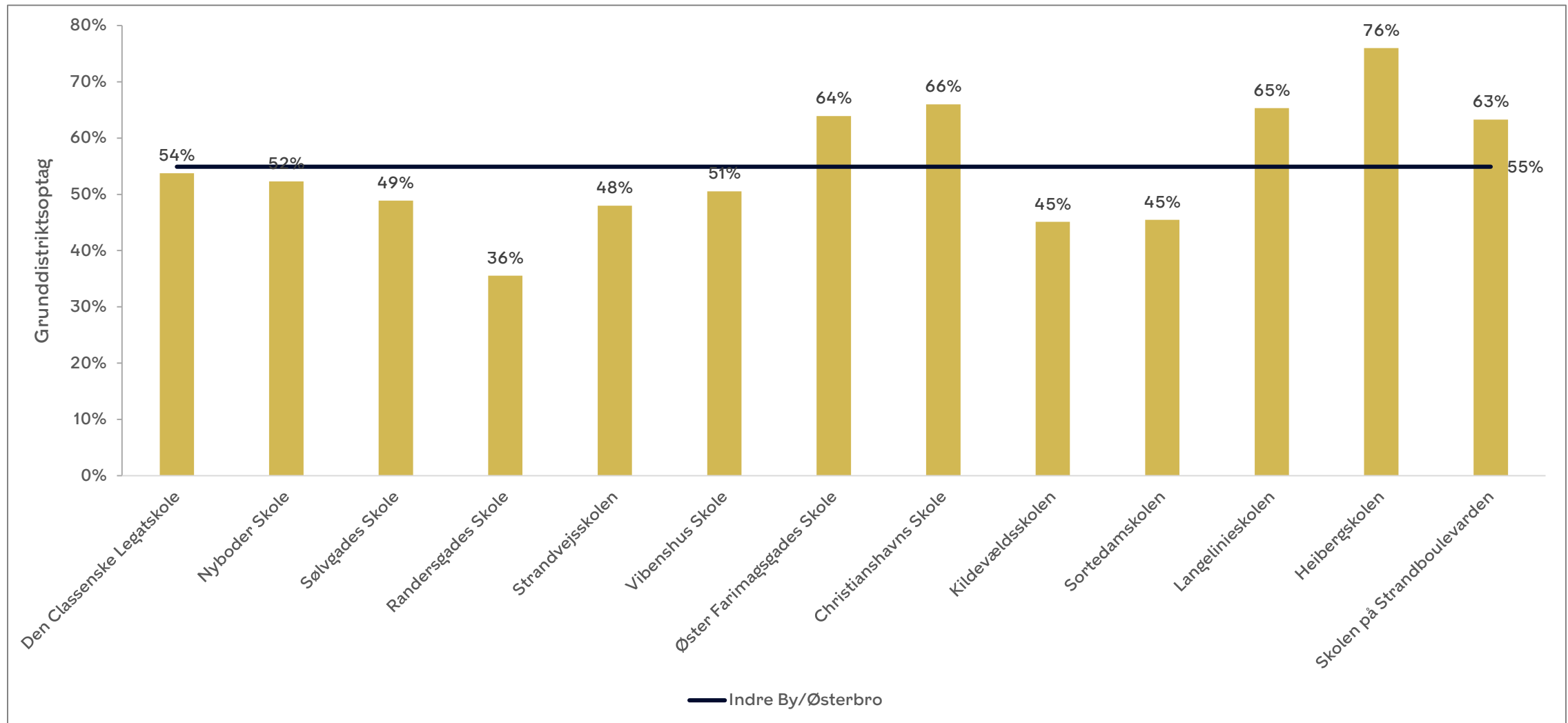
— Nuværende kapacitet

Skolernes indskrivning og kapacitet i Indre By i 2019/20



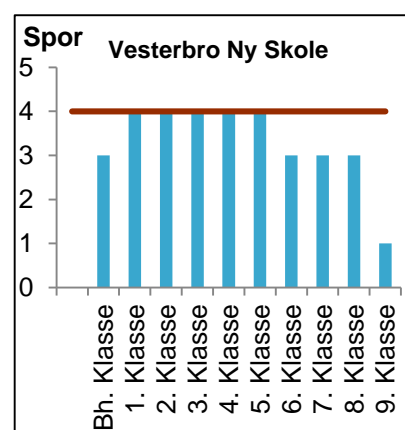
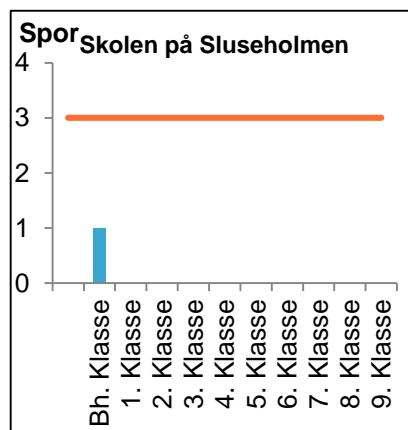
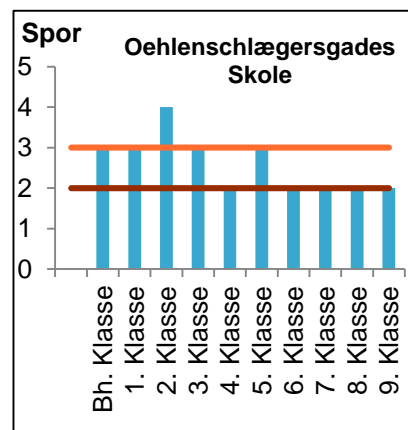
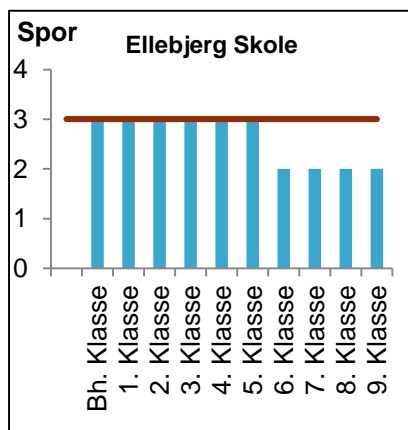
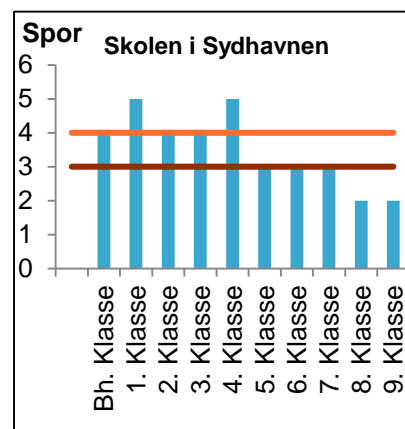
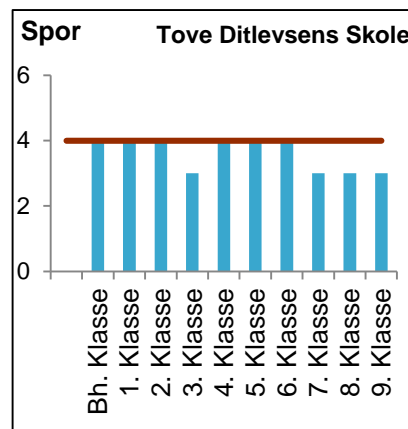
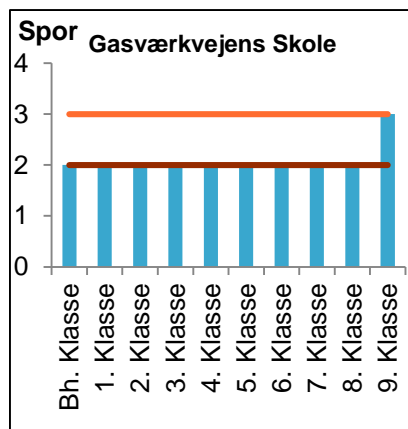
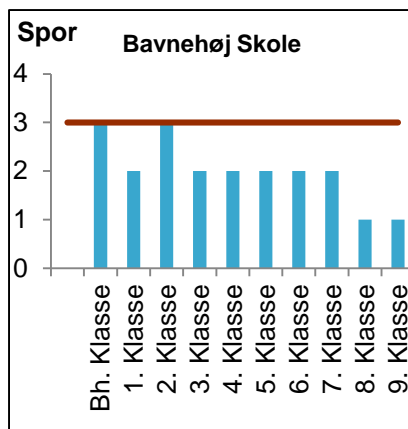
— Nuværende kapacitet

Søgning fra grunddistrikt i Indre By/Østerbro i 19/20



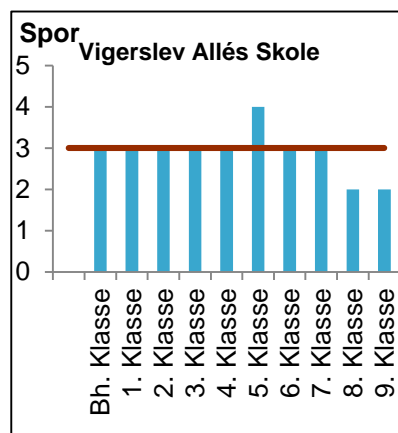
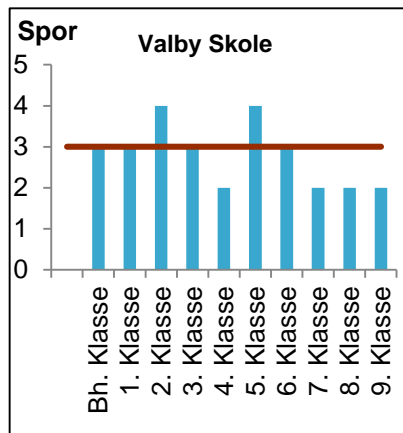
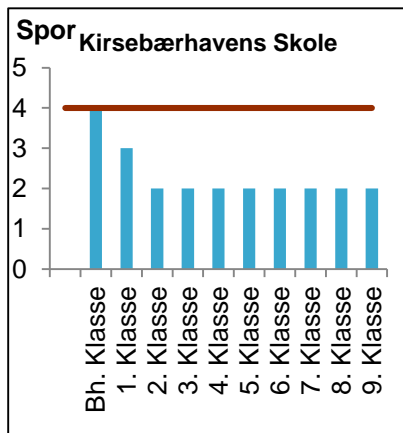
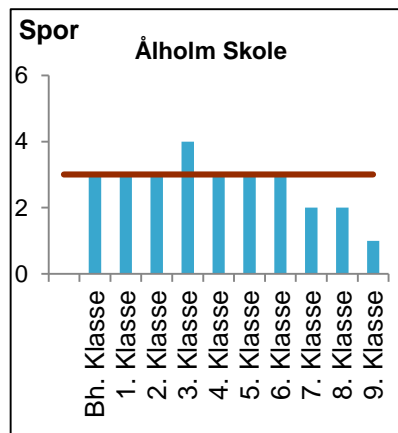
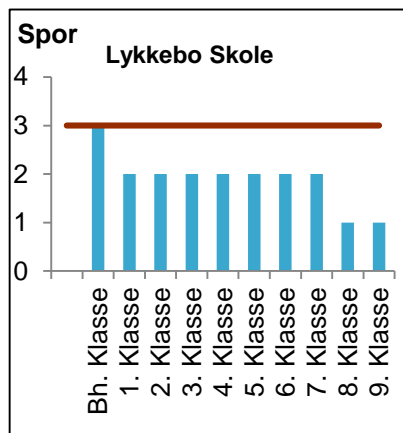
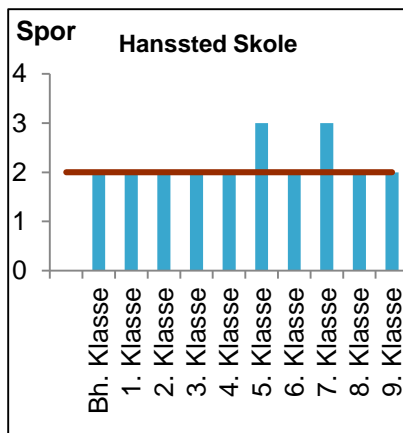
Grunddistriktsoptaget i 2019/2020 for hele København er 61%

Skolernes indskrivning og kapacitet på Vesterbro i 2019/20



— Kommende kapacitet
— Nuværende kapacitet

Skolernes indskrivning og kapacitet i Valby i 2019/20



— Nuværende kapacitet

Søgning fra grunddistrikt i Valby / Vesterbro / Kgs. Enghave i 19/20

