

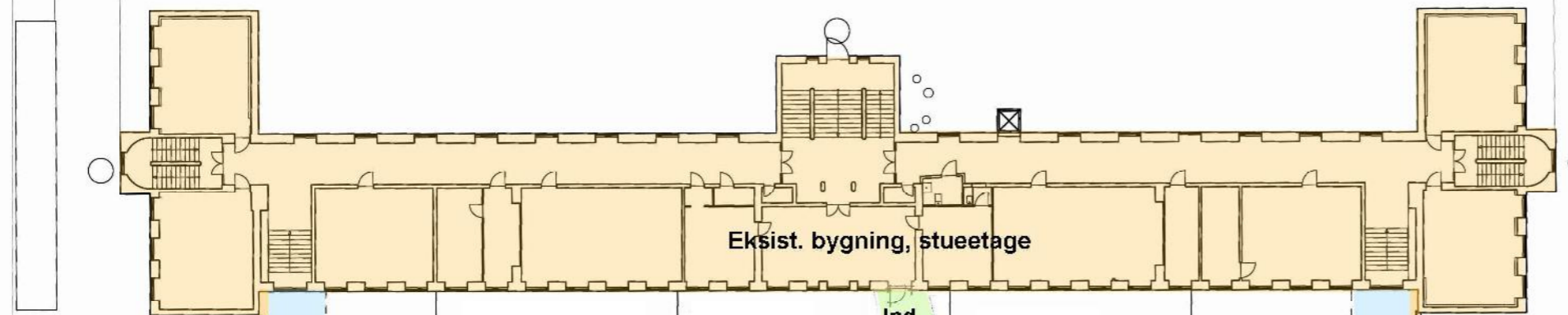
HØJDEVANGENS SKOLE

ETABLERING AF UNGDOMSMILJØ

Januar 2012

KHS arkitekter as





Eksist. bygning, stueetage

Ind

Connection

Ind

Ind

Gård

Have

GÅRDTOILET

GÅRDTOILET

Fase 2

Fase 1: maj-august 2012

Fase 2

Musik

Projekt

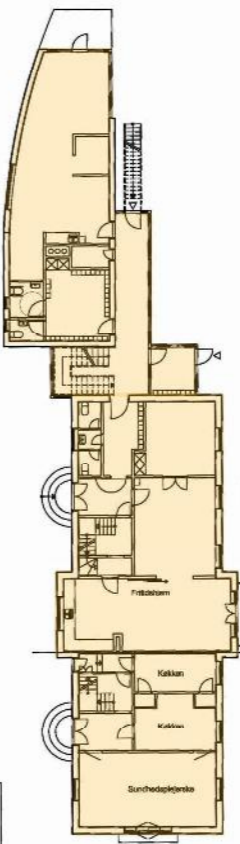
Multi-
rum

Ungdomsmiljø
Aktivitetsrum

Foyer

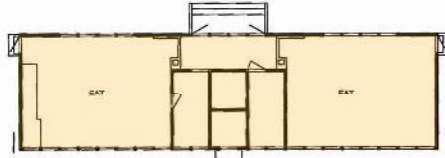
Toil. Køkken

Ungdomsmiljø
Lounge



FRITIDSHJEM

IDRÆT / FRITIDSKLUB



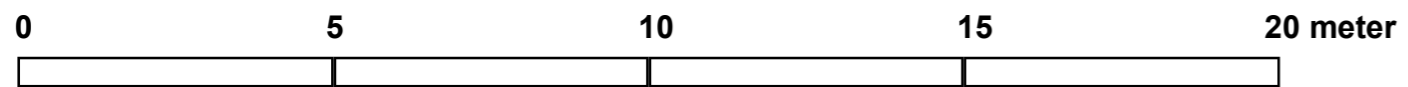
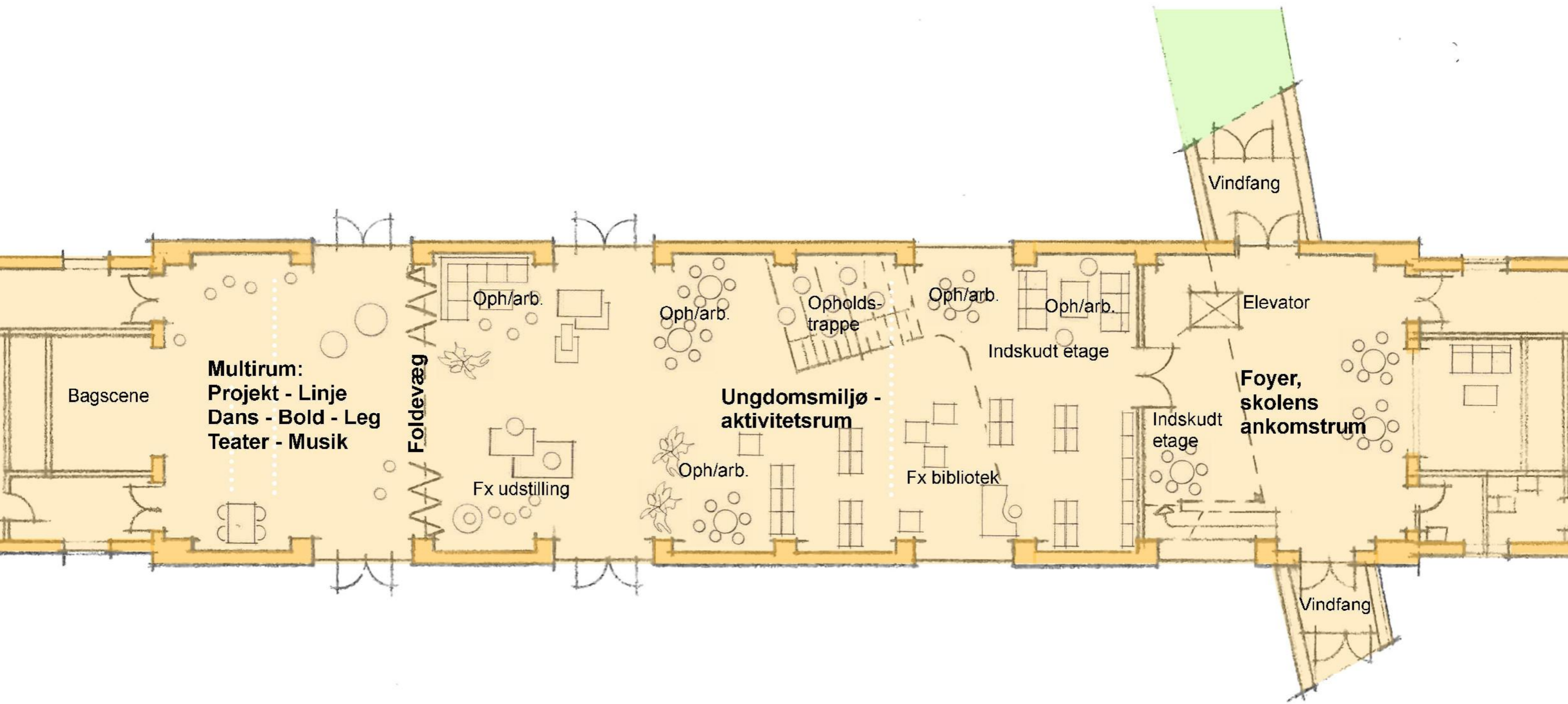
SKOLEPAVILLON I



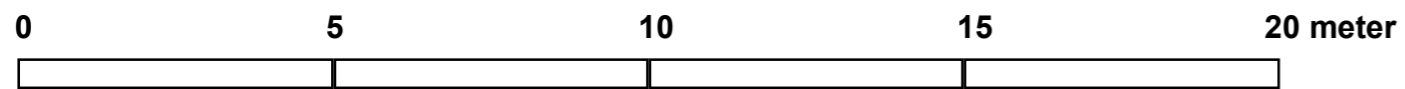
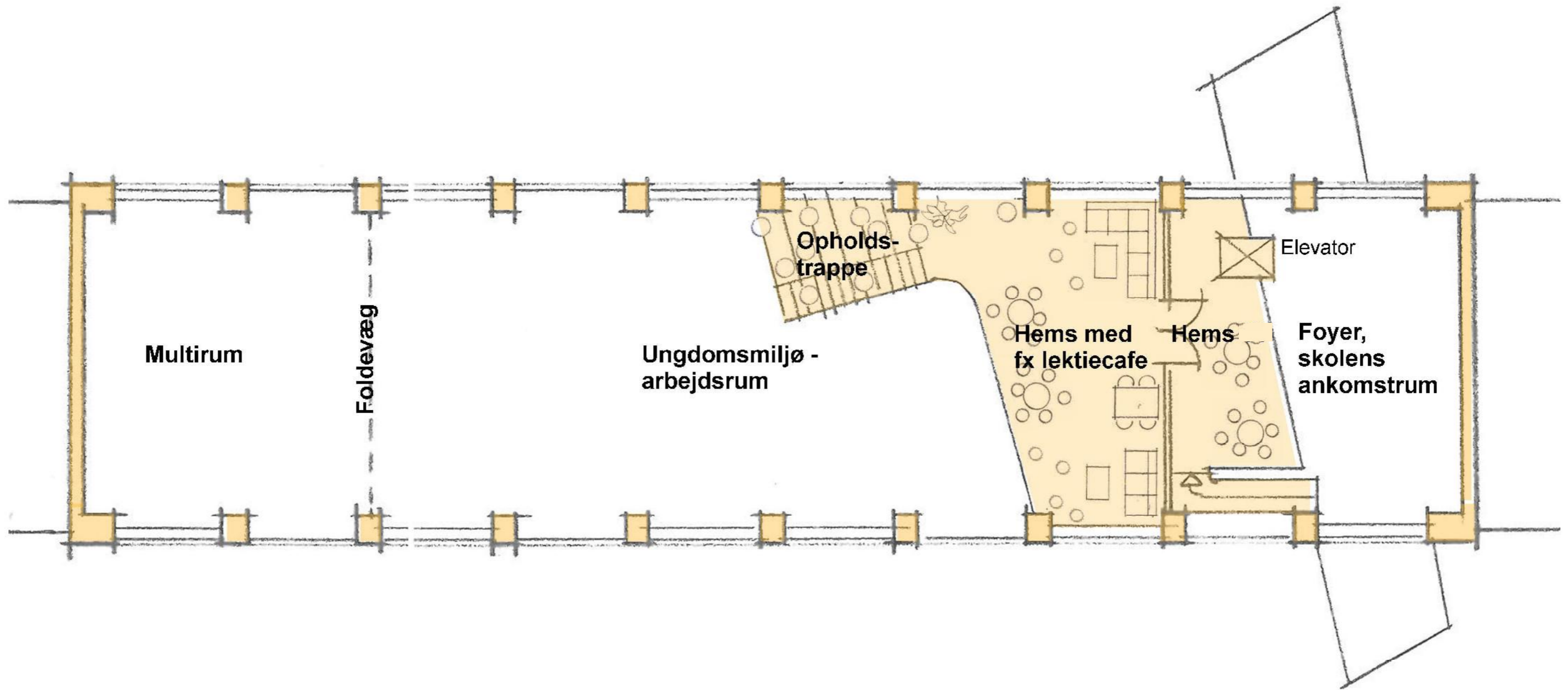
SKOLEPAVILLON II



Oversigtsplan, stueetage - fremtidige forhold



Planskitse: Vindfang - Foyer - Ungdomsmiljø aktivitetsrum - Multirum



Målestok 1:60 ved udprintning på A1 (60x84 cm) uden tilpasning

Planskitse: Hemse og opholdstrappe i ungdomsmiljøet

