



Lazarides Ltd.
11 Rathbone Place
London W1T 1HR

Vat Reg No. 839 8869444

2nd May 2013

To whom this may concern / City of Copenhagen,

ATMA is a muralist and street artist and long term Lazarides collaborator. He has successfully contributed to several of our out-of-site projects including The Minotaur & Bedlam.

ATMA is planning to create a mural-portrait of Soren Solkaer <http://sorensolkaer.com/>, one of the most important contemporary Danish photographers and citizen of Copenhagen.

We would like to back up his request to get the authorisation to paint the large wall near by the Brisikeli Cafe in the meat packing district for this project. ATMA is ready to travel to Copenhagen to deliver this project as soon as you agree with this request. We trust that ATMA will deliver a stand-out mural and hope you could kindly authorise him to do so.

Do not hesitate to contact me should you have any questions.

Kind regards,

Victoria Al-Din

Lazarides Ltd
11 Rathbone Place
London, W1T 1HR
Tel: + 44 (0) 203 636 5443 ext. 24
Email: victoria@lazinc.com



MURALS & INSTALLATIONS



"MADAME CHALEYAT", PARIS 1 CITY HALL, 2012, 350 x 350 cm



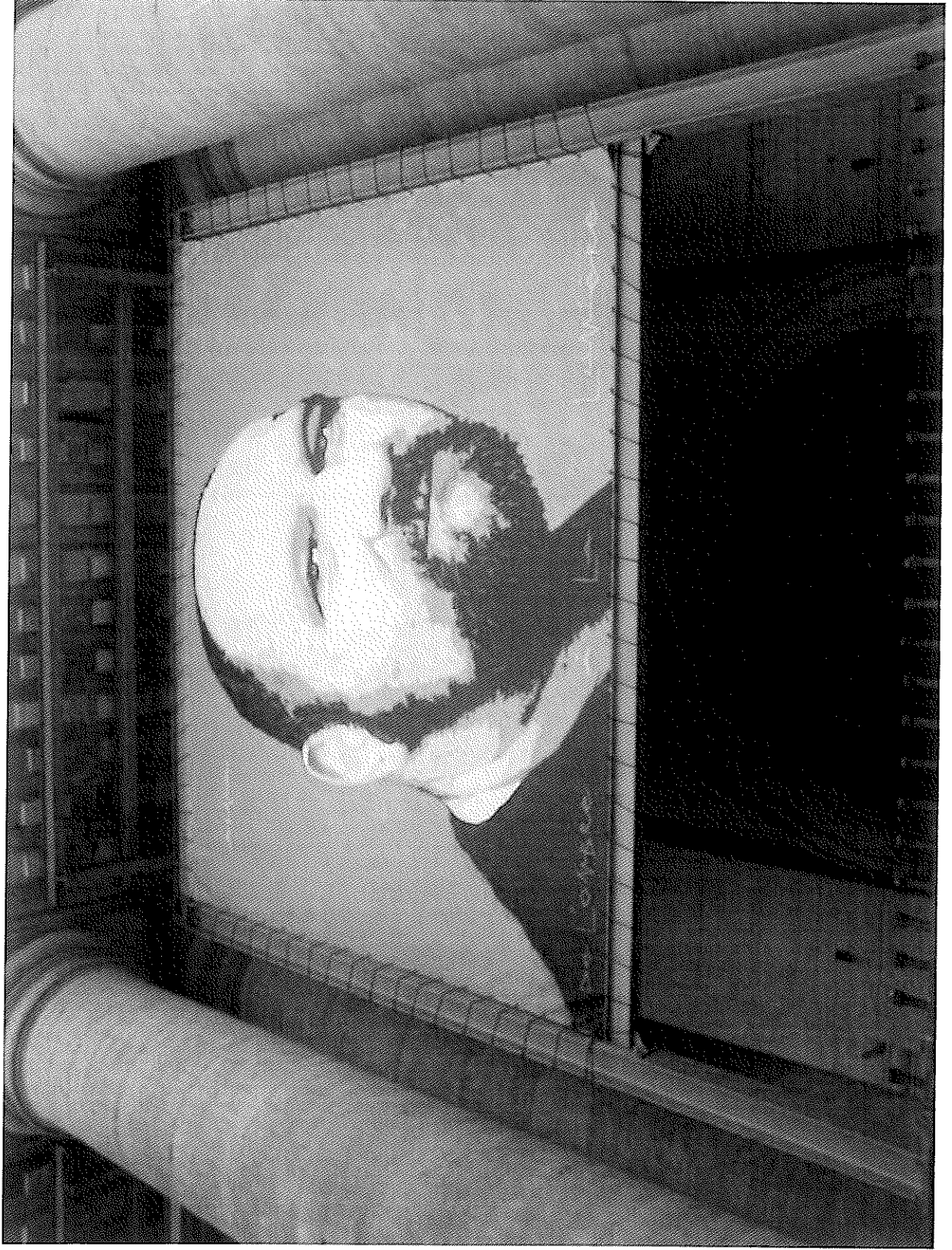
"MADAME CHALEYAT", PARIS 1 CITY HALL, 2012, 350x350 cm



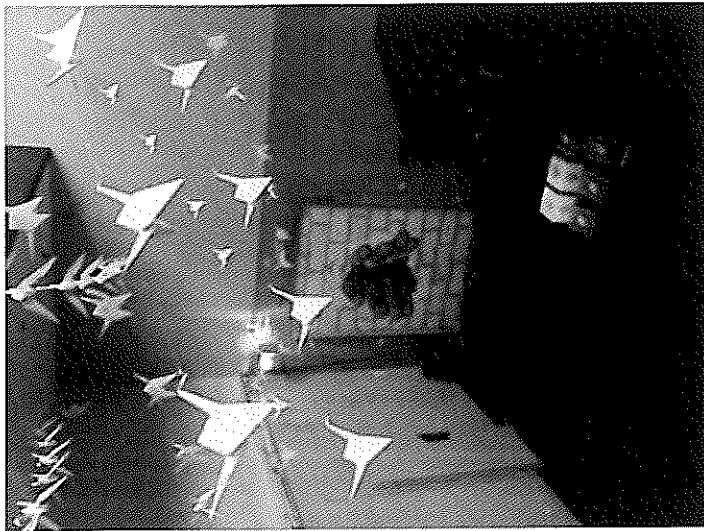
"LE GRAND MICHEL", EGLISE SAINT SULPICE, PARIS 1, 2012, 450 x 450 cm



"FLYING MAN", DIE MUNZE, PRET-A-DINER, LUFTHANSA COMMISSION, BERLIN 2012, 500 x 500 cm



"FLYING MAN", DIE MUNZE, PRET-A-DINER, LUFTHANSA COMMISSION, BERLIN 2012, 500 x 500 cm



"OPENING", DIE MUNZE, PRET-A-DINER, LUFTHANSA COMMISSION, BERLIN 2012, 200 x 200 cm



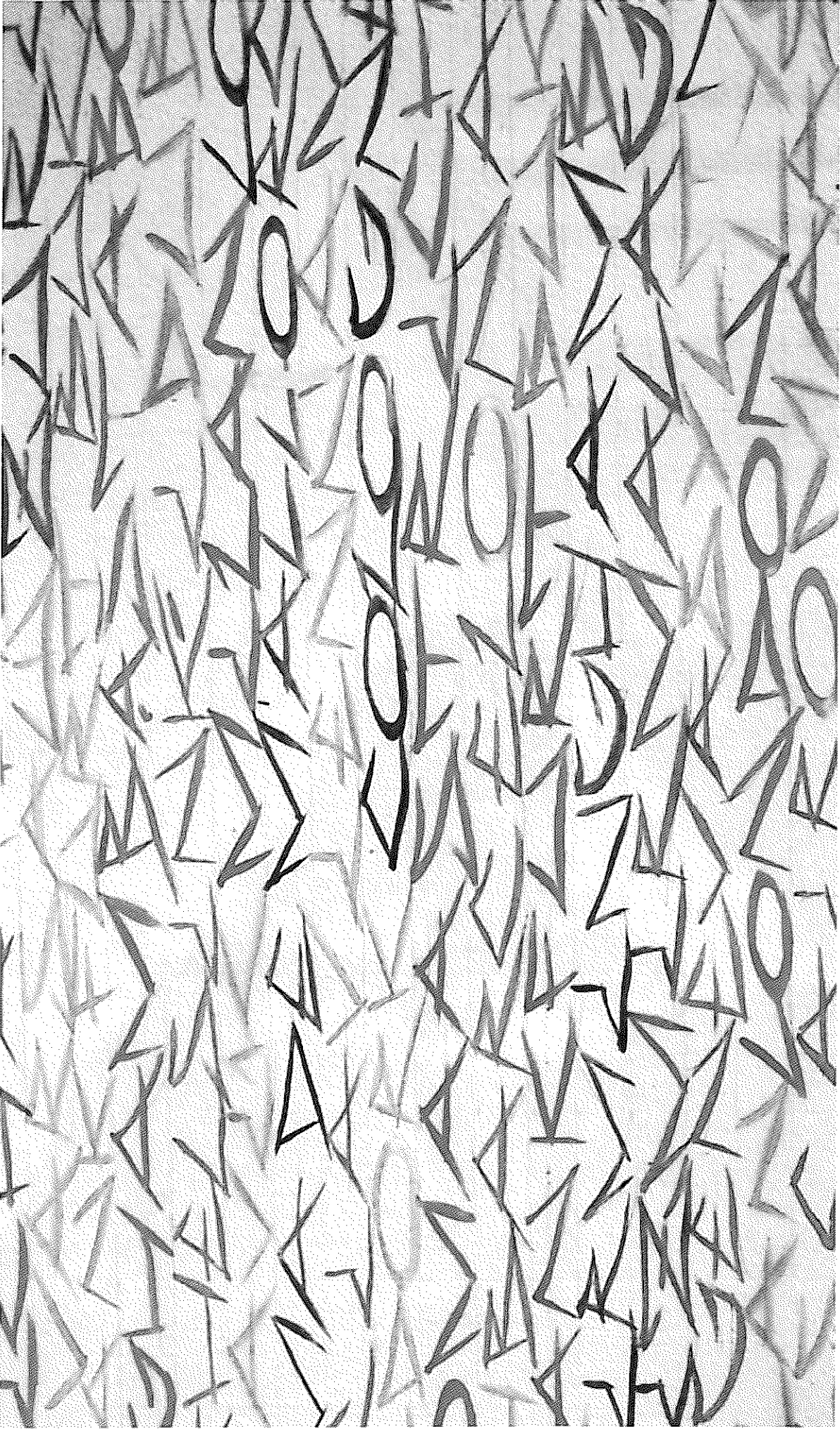
"FLYING MAN", DIE MUNZE, PRET-A-DIMER, LUFTHANSA COMMISSION, BERLIN 2012, 500 x 500 cm



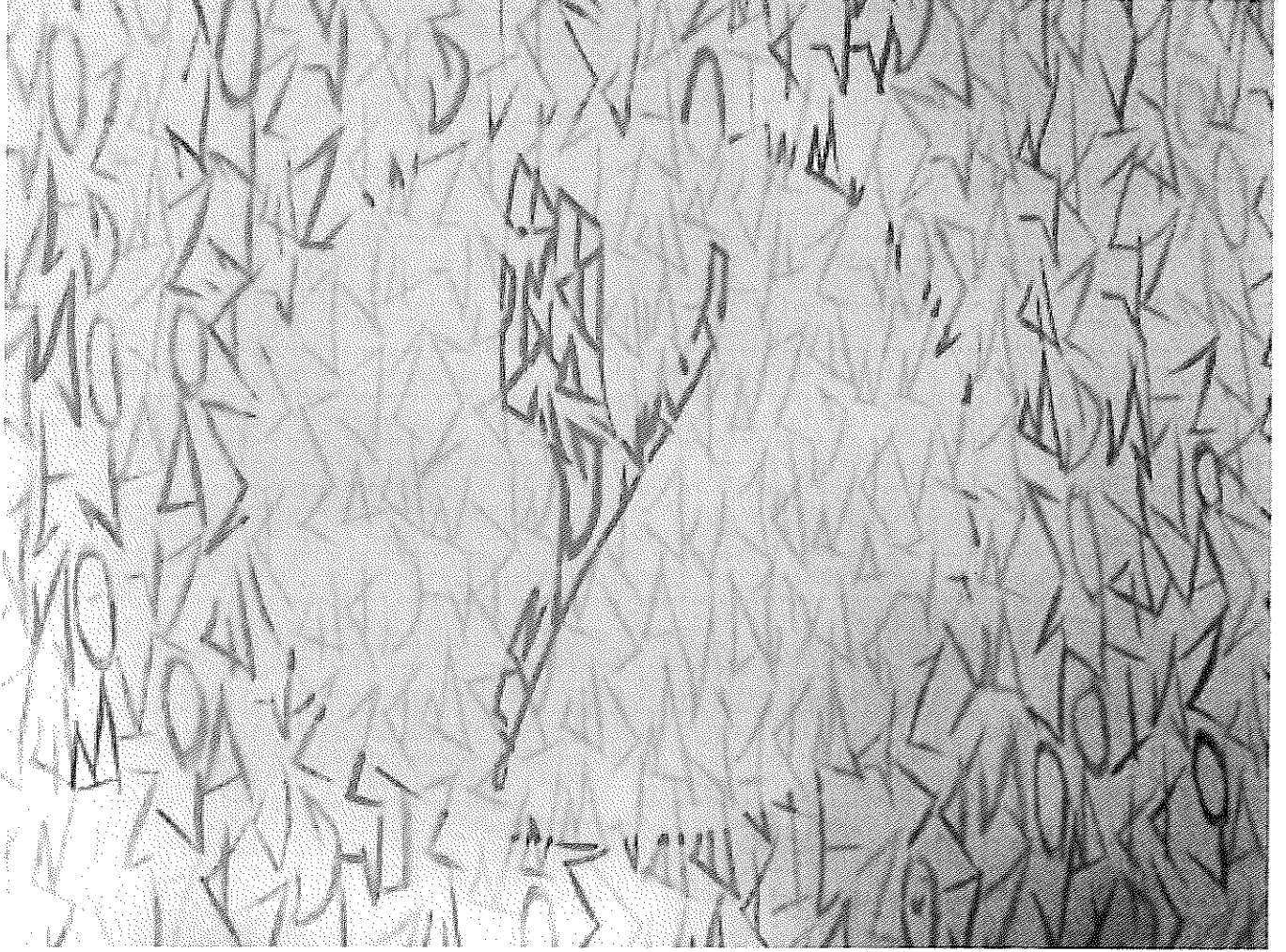
"FLYING MAN", DIE MUNZE, PRET-A-DINER, LUFTHANSA COMMISSION, BERLIN 2012, 500 x 500 cm



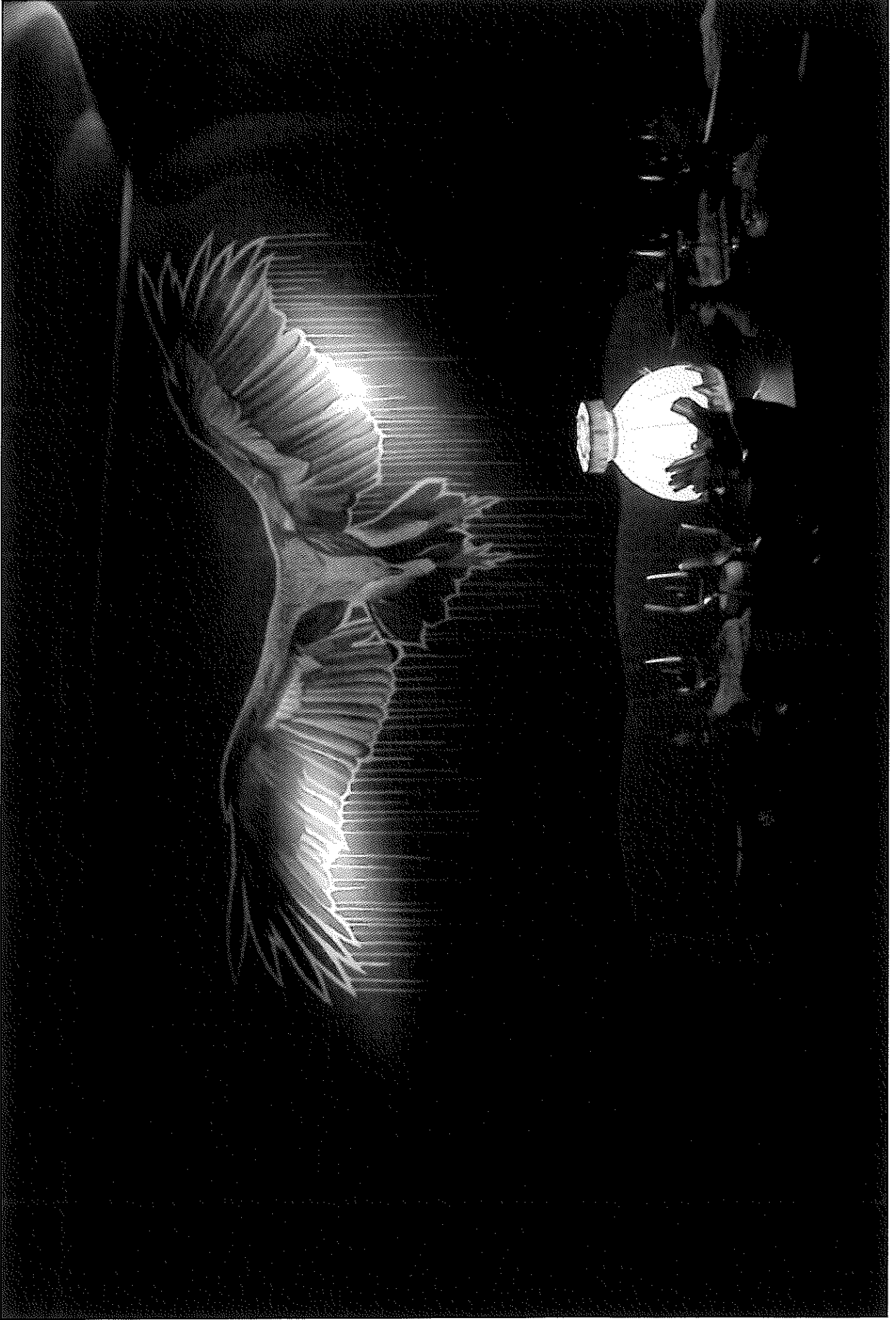
"FLYING MAN", DIE MUNZE, PRET-A-DINER, LUFTHANSA COMMISSION, BERLIN 2012, 500 x 500 cm



"FLYING MAN", DIE MUNZE, PRET-A-DINER, LUFTHANSA COMMISSION, BERLIN 2012, 500 x 500 cm



"FLYING MAN", DIE MUNZE, PRET-A-DINER, LUFTHANSA COMMISSION, BERLIN 2012, 500 x 500 cm



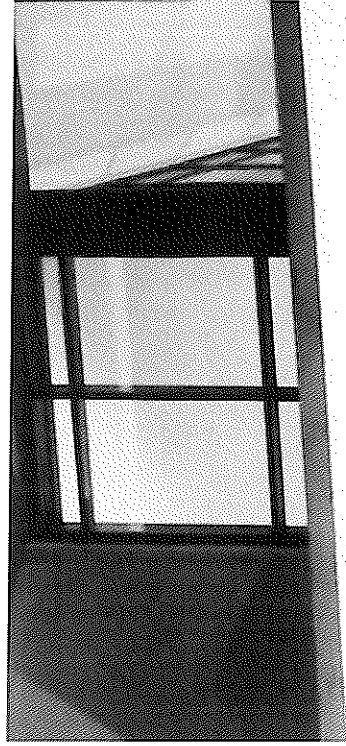
"ALDER", DIE MUNZE, PRET-A-DINER, LUFTHANSA COMMISSION, BERLIN 2012, 250 x 120 cm



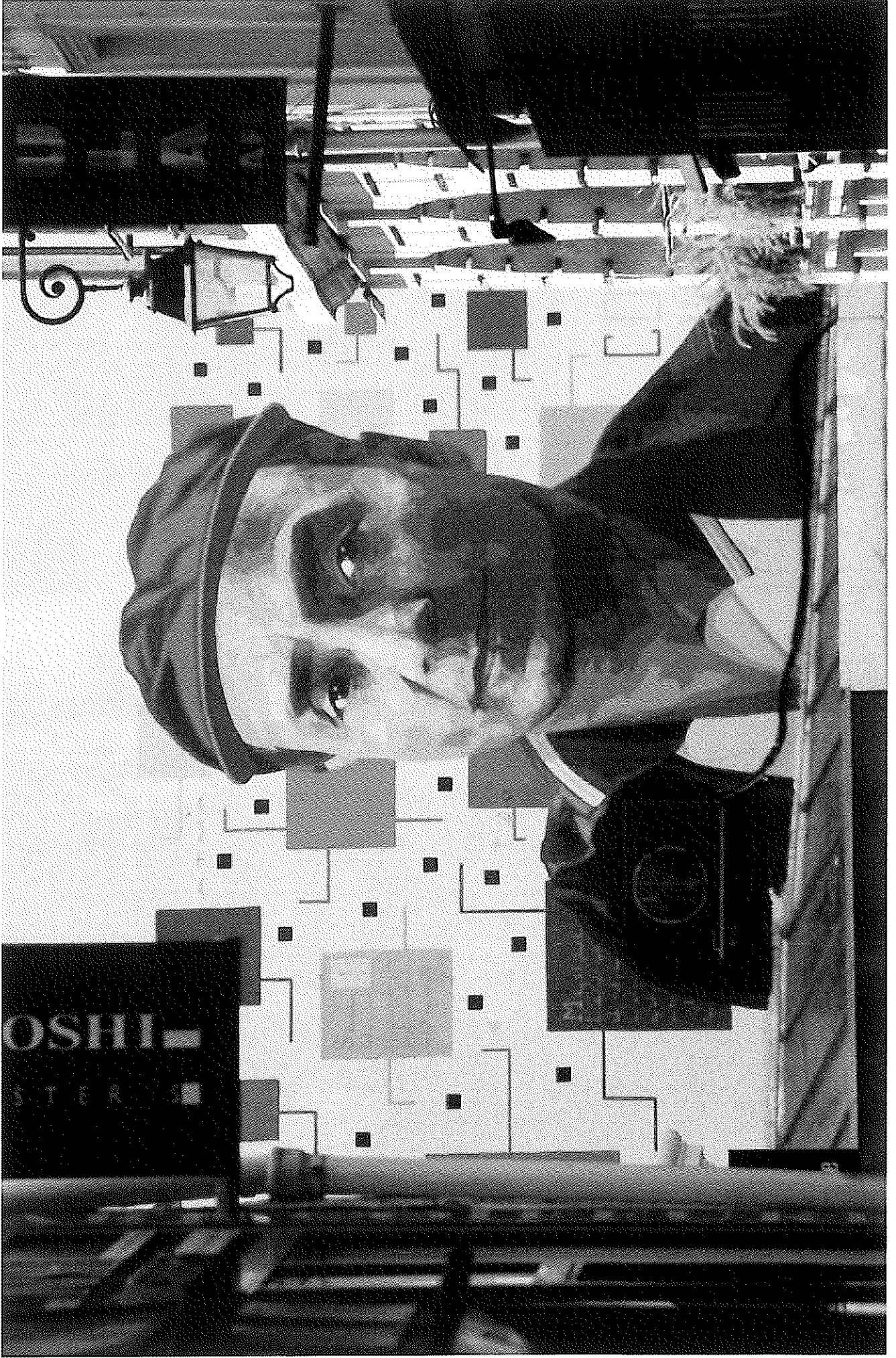
"NEW MONA LISA", COLLABORATION WITH CHA NOIR, AIX-EN-PROVENCE 2011, 900 x 500 cm



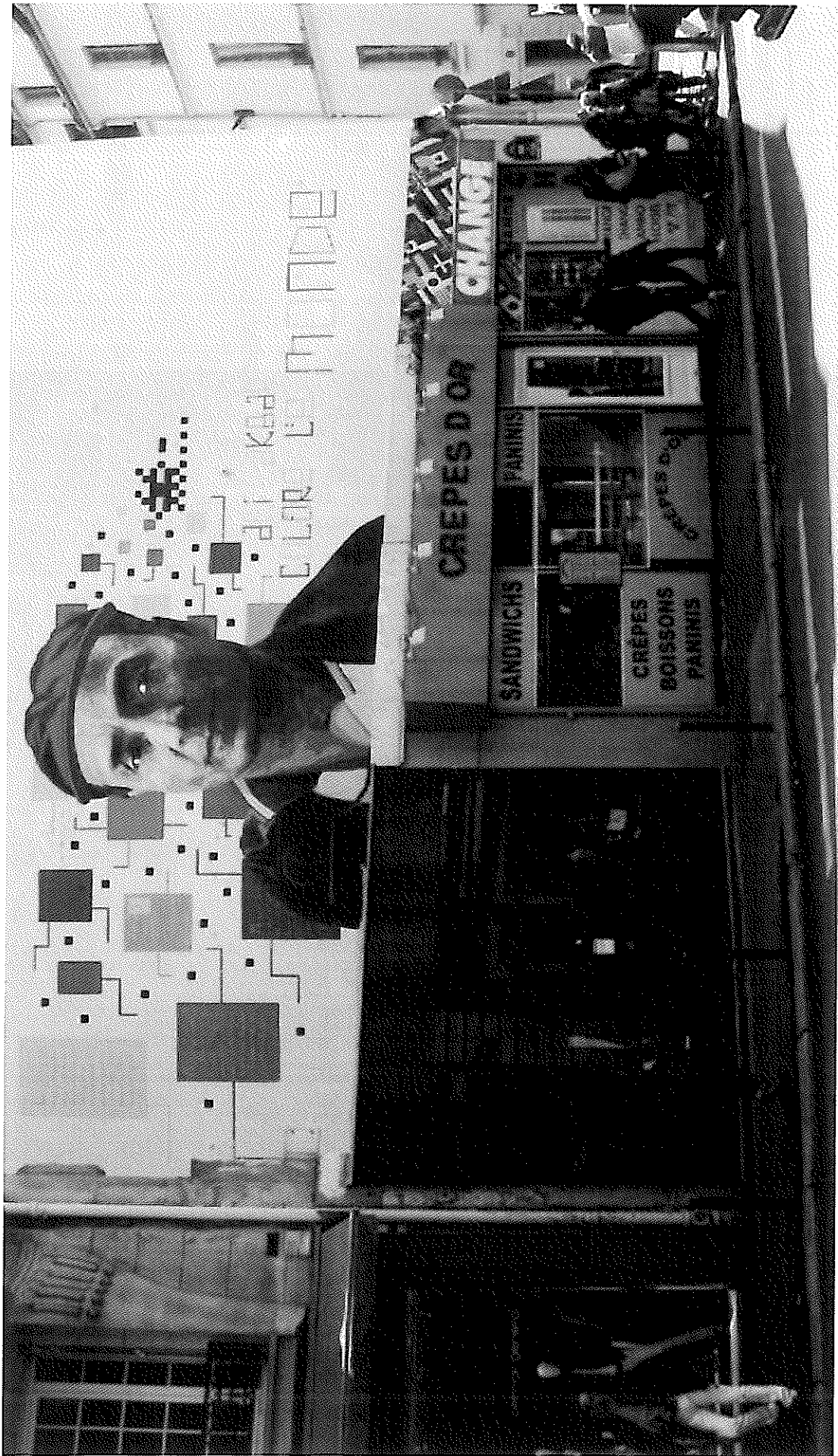
"NEW MONA LISA", COLLABORATION WITH CHA NOIR, AIX-EN-PROVENCE 2011, 900 x 500 cm



"NEW MONA LISA", COLLABORATION WITH CHA NOIR, AIX-EN-PROVENCE 2011, 900 x 500 cm



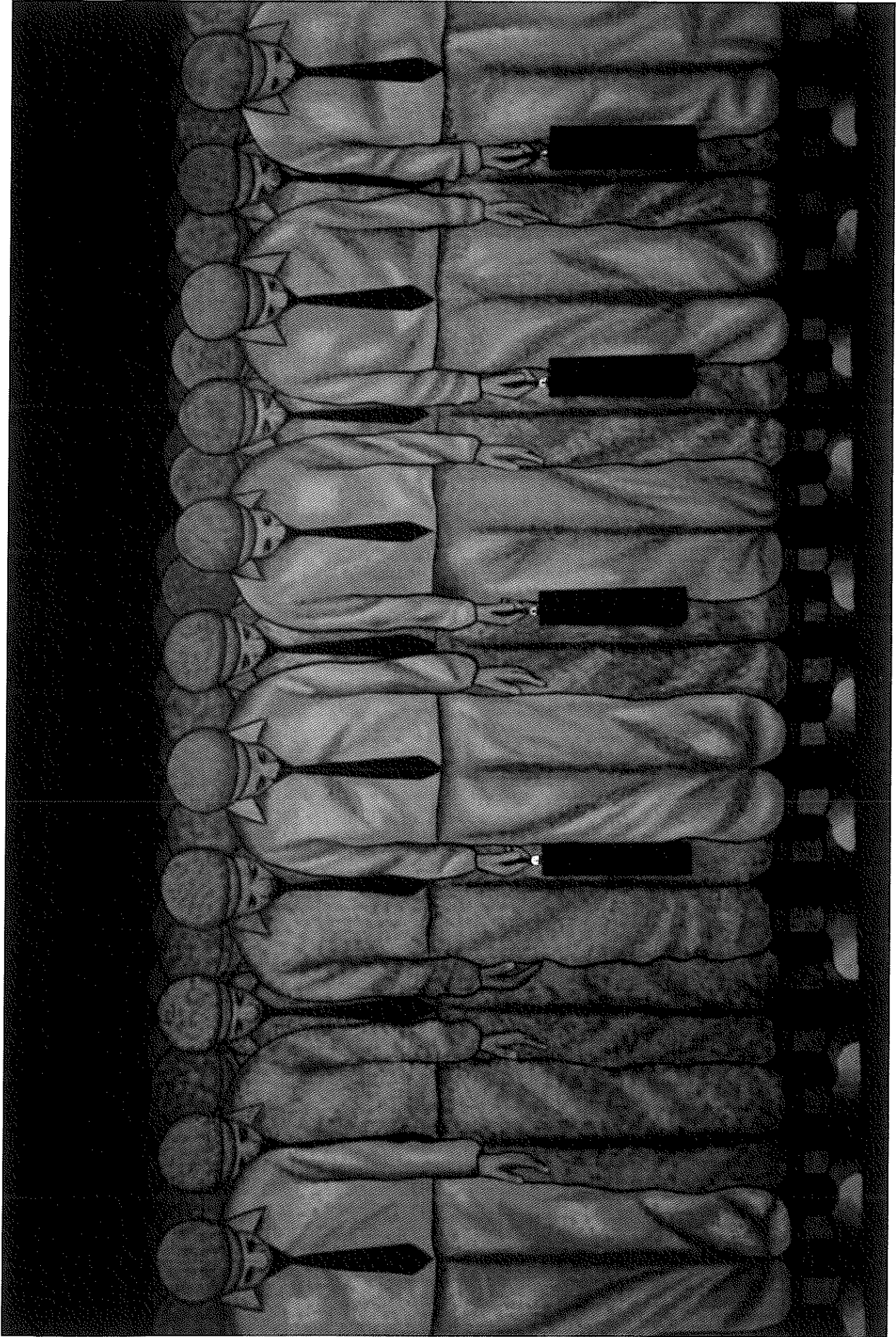
"ALI AKBAR", LATIN QUARTER, PARIS, 10x5m



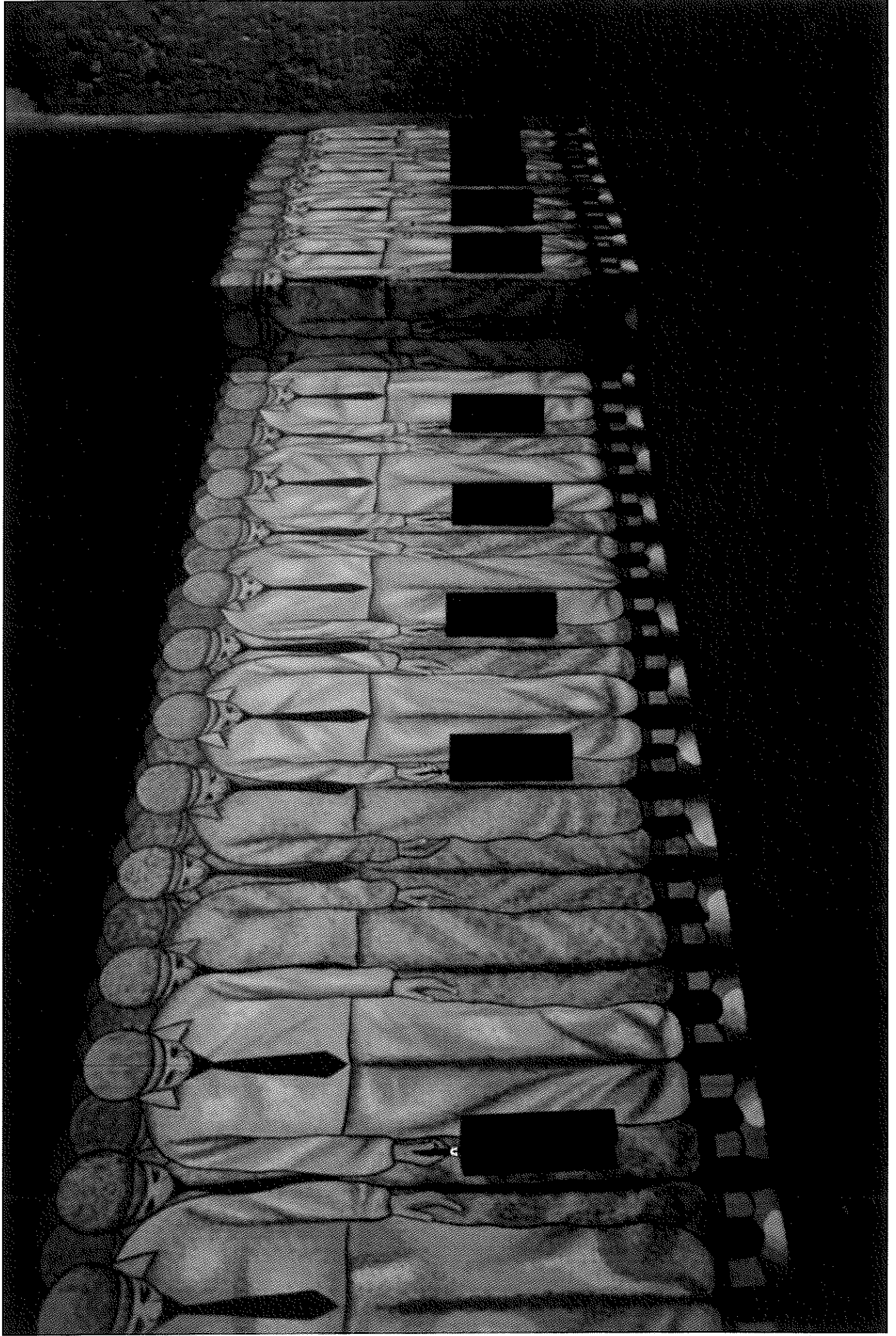
"ALI AKBAR", LATIN QUARTER, PARIS, 10x5m



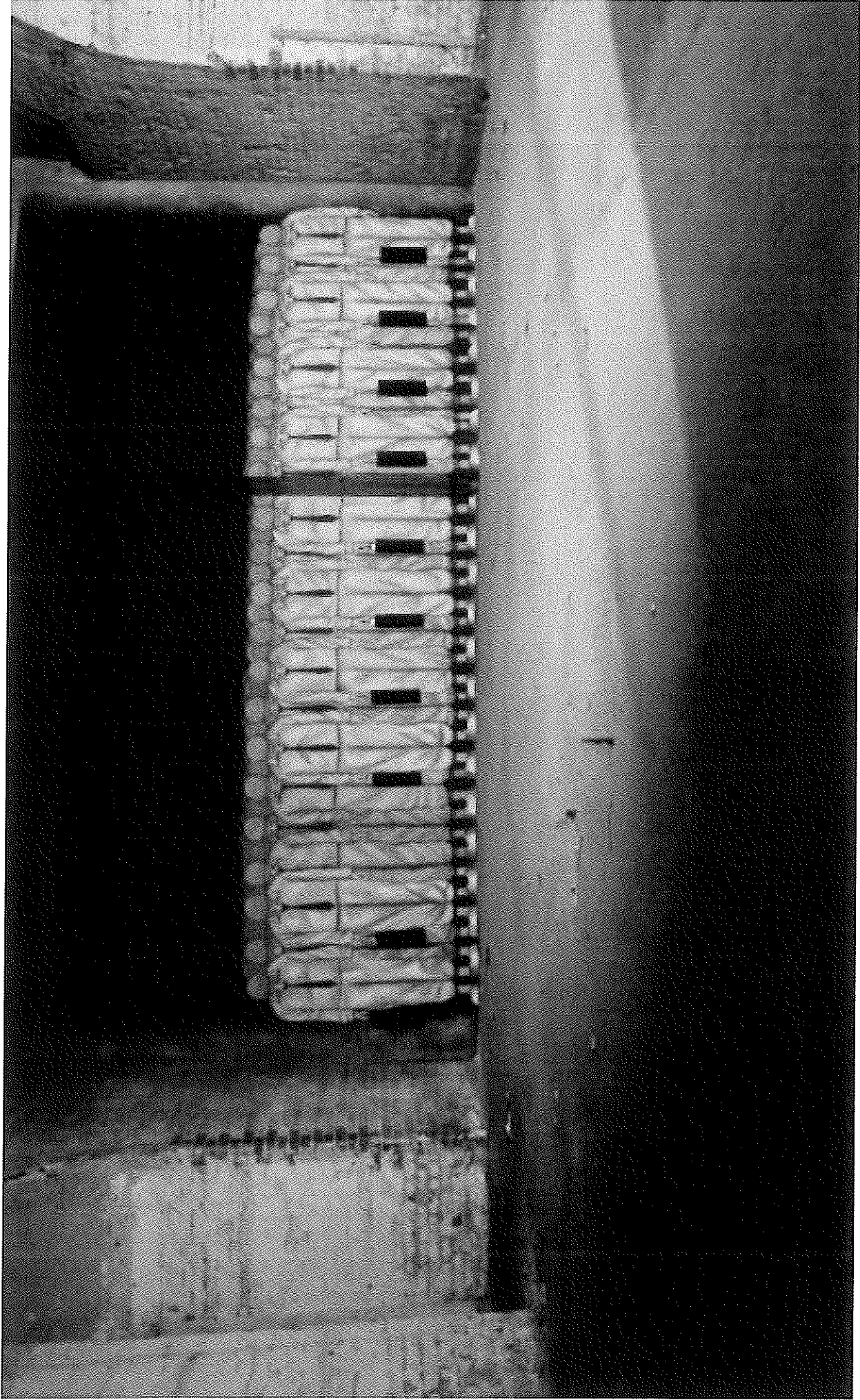
"ALI AKBAR", LATIN QUARTER, PARIS, 10x5m



“METROPOLI SOULS”, TUNNEL 228, LONDON, 7x4m



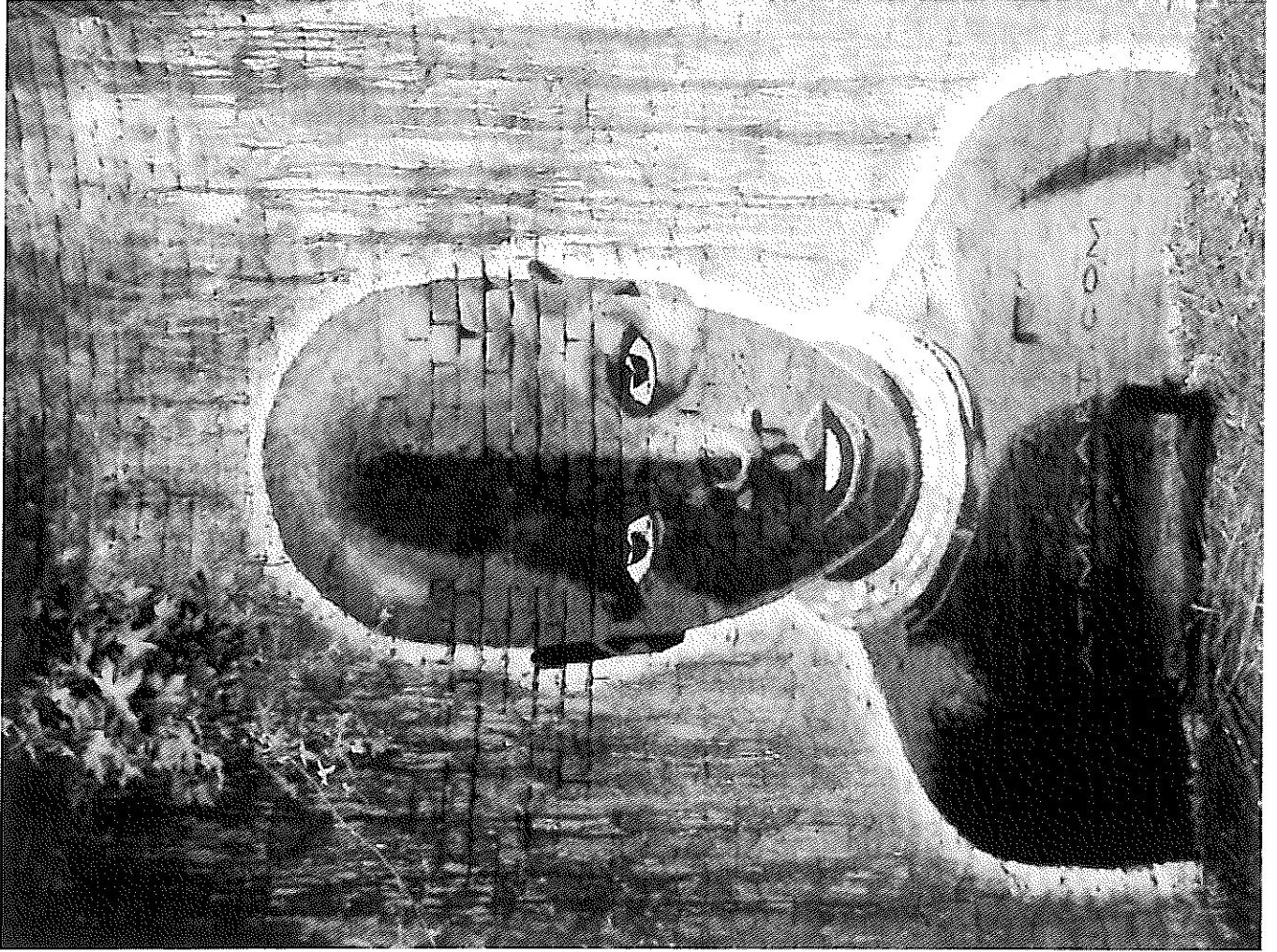
"METROPOLI SOULS", TUNNEL 228, LONDON, 7x4m



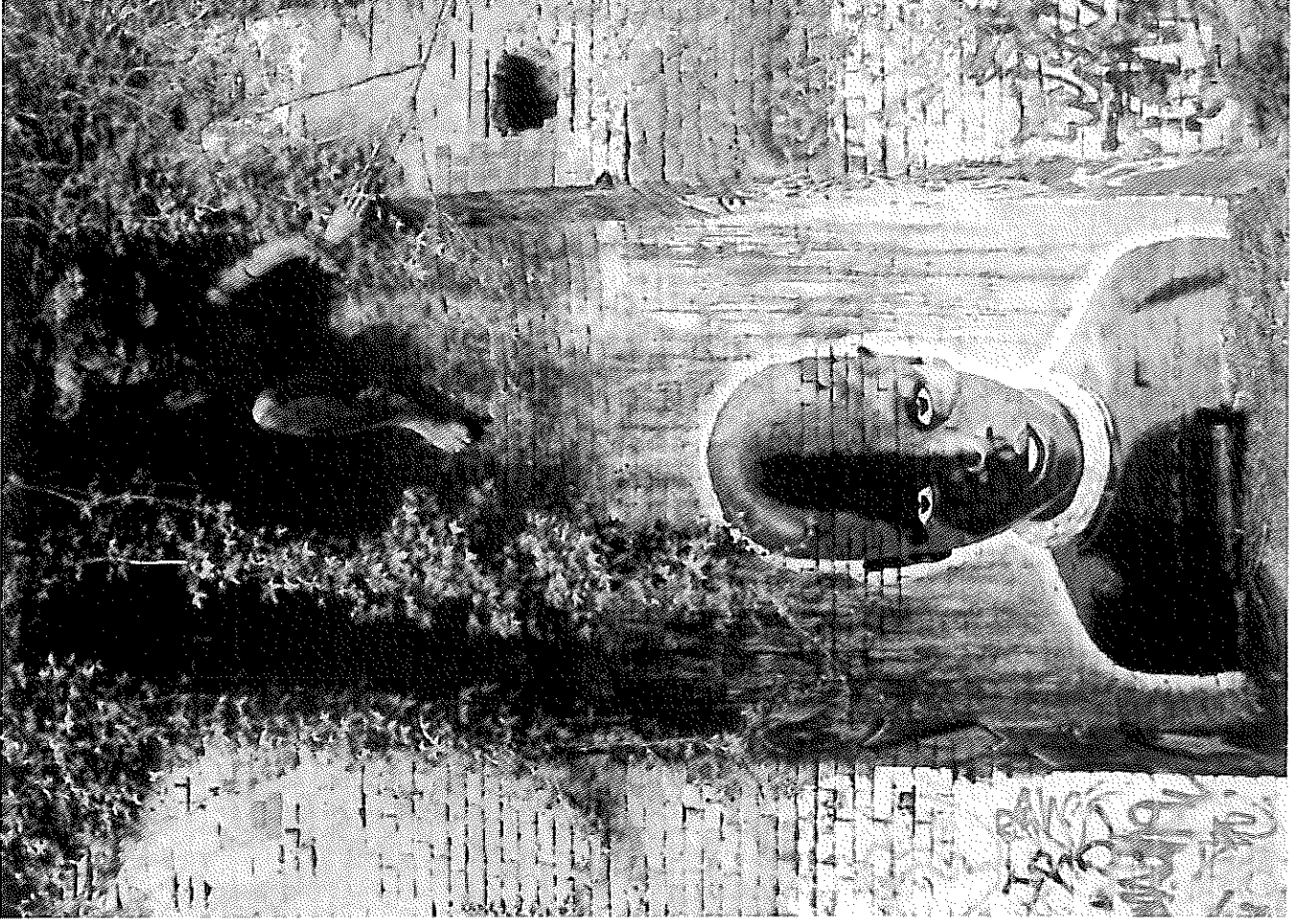
"METROPOLI SOULS", TUNNEL 228, LONDON, 7x4m



"EBENE", LONDON, 3x4m



"EBENE", LONDON, 3 x 4 m



"EBENE", LONDON, 3 x 4 m



"THE I-GOD", EAST LONDON, 2x4m



"THE I-GOD", EAST LONDON, 2x4m

©atma



"THE EYE OF THE WORLD", CAMEL ARTE, SPAIN, 2x2m



"THE EYE OF THE WORLD", CAMEL ARTE, SPAIN, 2x2m



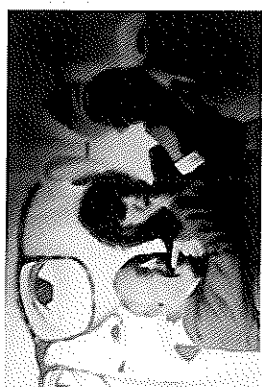
"THE EYE OF THE WORLD", CAMEL ARTE, SPAIN, 2x2m

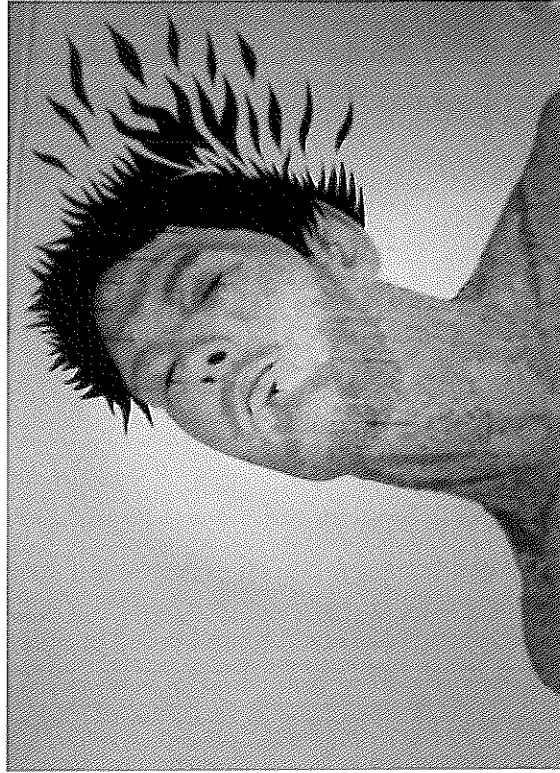


"GILBERT & GEORGE E1", 1001, BRICKLANE, LONDON, 5x3m



"GILBERT & GEORGE EI", 1001, BRICKLANE, LONDON, 5x3 m





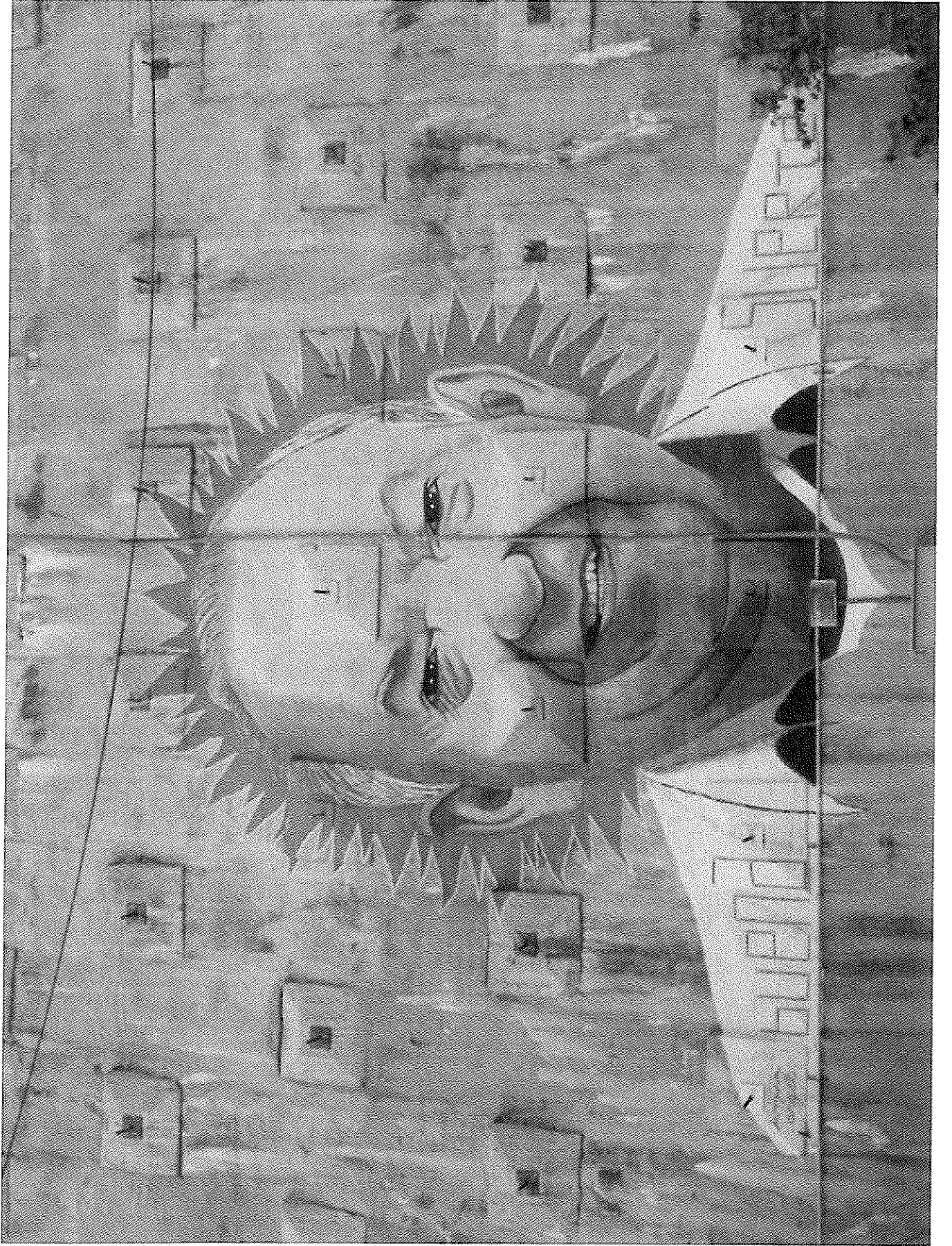


©calma

"EL MAGO DE LA SUERTE", SAN PEDRO, MEXICO, 14x14m



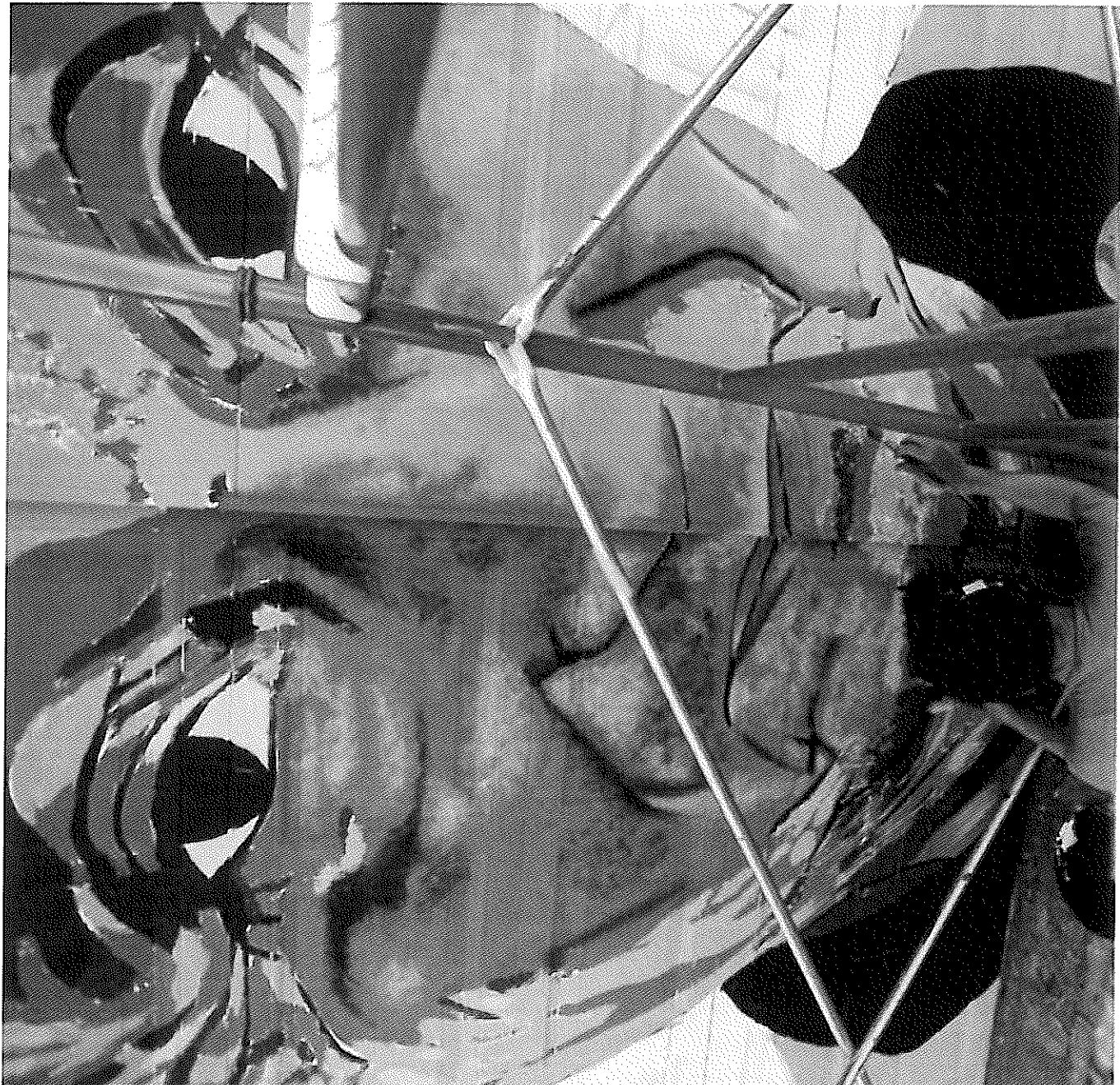
"EL MAGO DE LA SUERTE", SAN PEDRO, MEXICO, 14x14 m



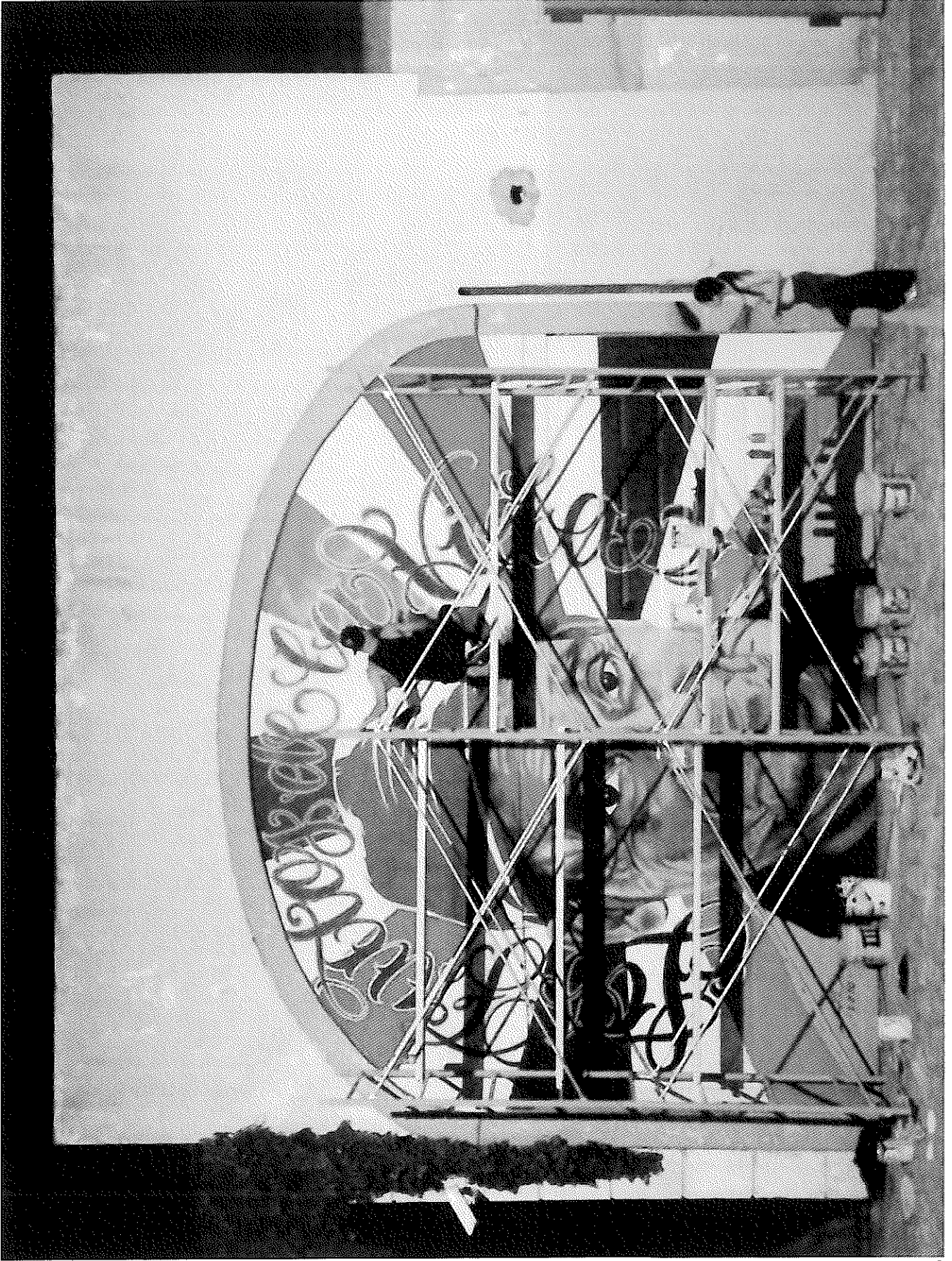
"EL MAGO DE LA SUERTE", SAN PEDRO, MEXICO, 14x14m



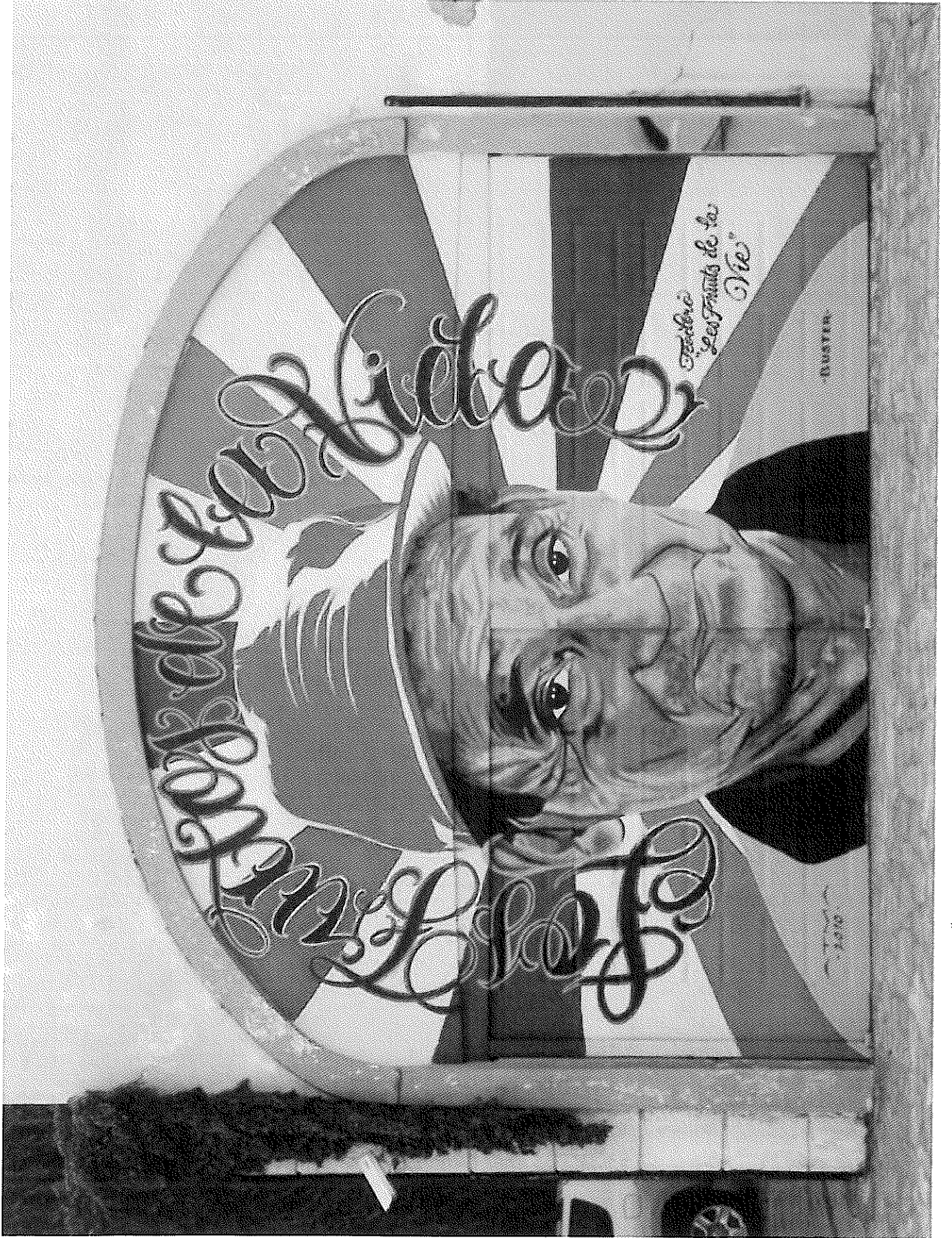
"EL MAGO DE LA SUERTE", SAN PEDRO, MEXICO, 14x14m



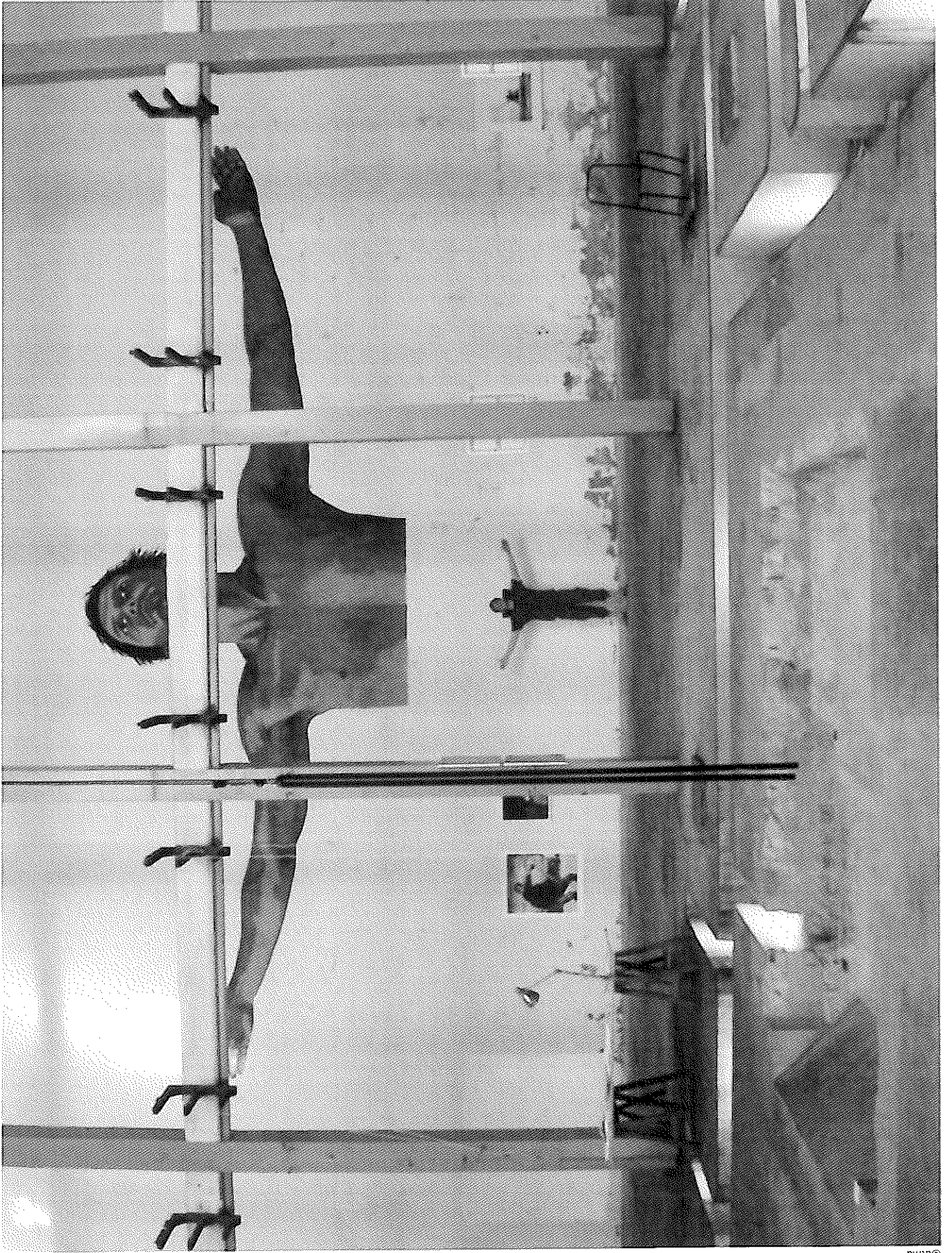
“TEODORO - LOS FRUTOS DE LA VIDA”, MONTEREY, MEXICO, 6x6m



"TEODORO - LOS FRUTOS DE LA VIDA", MONTEREY, MEXICO, 6x6m



"TEODORO - LOS FRUTOS DE LA VIDA", MONTEREY, MEXICO, 6x6m



"ENLIGHTENMENT", LX FACTORY, LISBON, PORTUGAL, 14x5m