



Worldbuilding workshop at **Kunsthal Gammel Strand**, Copenhagen during the annual **Kulturnat** event. Materials: soil, water, flint; 2024



A presentation and talk at **Grasp Festival**, during EARTHLY BELONGINGS AND IMAGINATIONS sessions; 2024





*GeoSanctuary: Dragespiret*, Permanent indoors biotope installation + AI generated animation and sound design at Vordingborg Gymnasium; Materials: flint, wood, polymer clay, waste plastic, 200 kg soil, locally sourced moss and ferns, automated lighting and watering system, aluminum frame, safety glass, transport crates, 2 tv screens, earphones; 200 x 130 x 90 cm; 2024





Havevært - en serie af stedspecifikke installationer og performative vandringar under 2 uges residency på The Droplet i Herlev, august 2023.



LISELUND LABORATORIUM MØN

# MARTHA'S SECRET GARDEN



NOT THE DREAM OF  
THE UNKNOWN, BUT THE  
UNKNOWN THAT DREAMS



A MULTIDIMENSIONAL DRAMA BY

## GEORG JAGUNOV

DIARY TEXT:

## NINA SCHACK KOCK



Portrait of Martha de la Calmette painted by  
C.G. Kratzenstein Stub (1783-1816), signed  
1814.



The map from 1771 which shows what the area looked like before  
Liselund was laid out. There was not much agricultural land, but  
alder swamps, bogs, lakes and a large forest by the cliff.

## INTRO

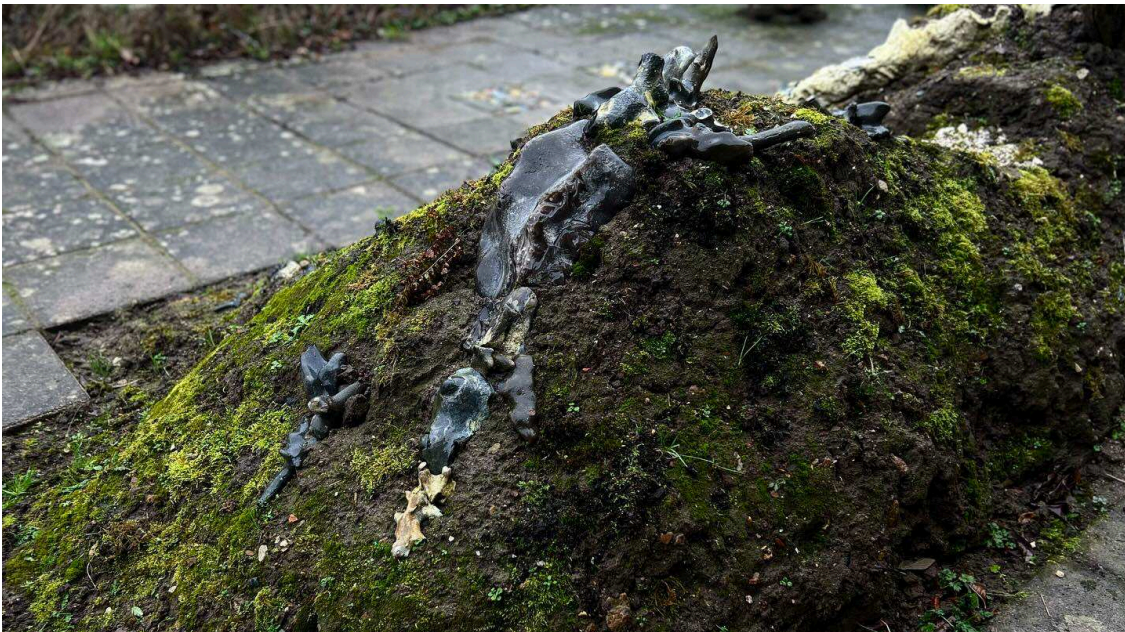
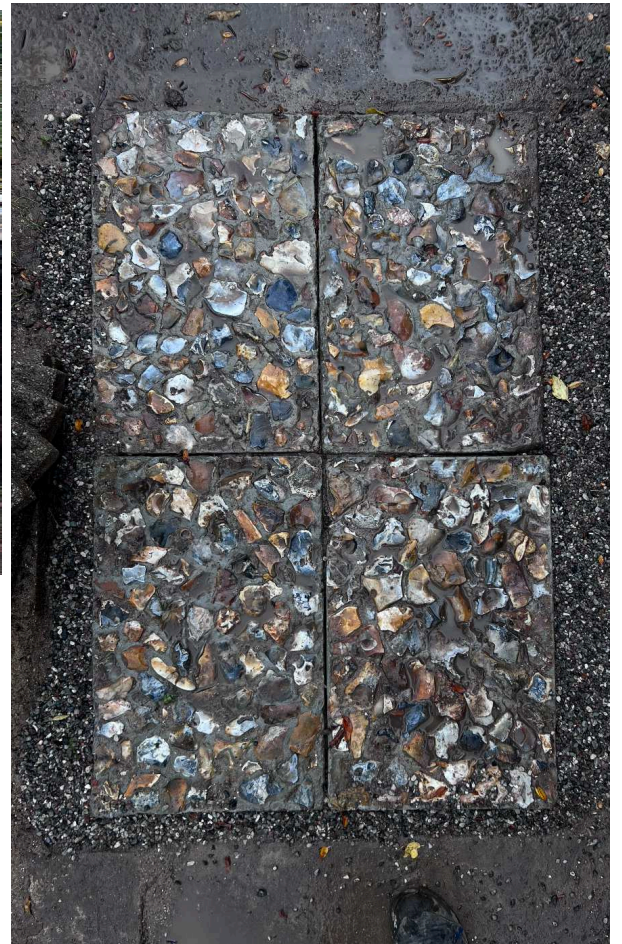
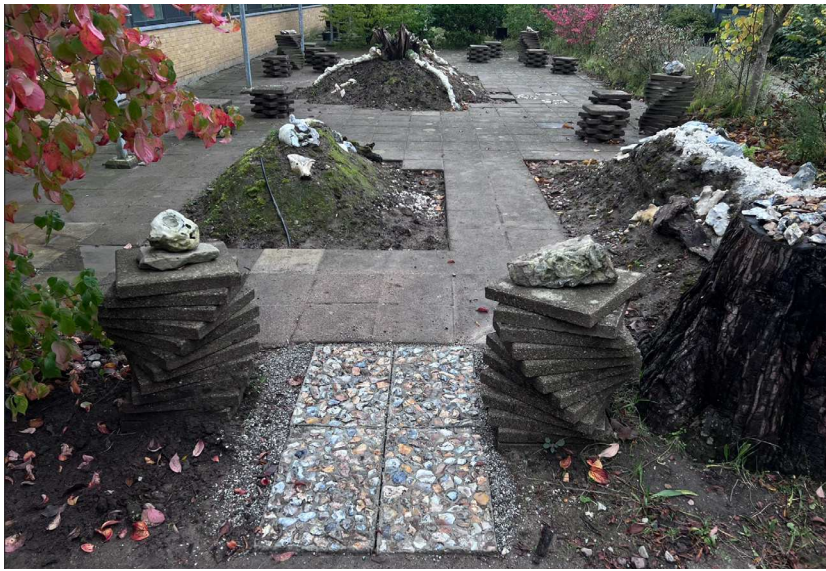
A map from 1771 shows that the landscape where Liselund garden is now located was once covered by swamps and alder-tree forest. Liselund was founded in the 1780s. The vision was to create a romantic landscaped garden. A large part of the work consisted of directing water from the surrounding lakes through the garden and further out to the cascading waterfall at the cliff.

Charles de la Calmette - son of the Calmette couple who founded Liselund - married Martha in 1810. She lived alone at Liselund for 57 years, from the time she became a widow in 1820 and until her death in 1877.

Martha's Secret Garden is an art walk that starts at Liselund Lystslot (The old palace), continues down through the Cascade Valley and ends on a plateau on Møns Klint (the route is about 1 km in total). The work consists of this booklet with Martha's diary notes by Nina Schack Kock in five scenes and scientific notes by Georg Jagunov.

On the next page you'll find two maps. One is a drawing of the route through the Cascade Valley, where Georg has added a number of site-specific installations and sculptures. The underlying map is a terrain shadow map of the area. A shadow map is stripped of vegetation and thus highlights the peculiar patterns in the landscape (read more on page 18).





*Atriumgården*, Permanent moss and flint garden at Gäsetårnskolen, Vordingborg, created during Huskunstnerordning Residency between 2023 - 2024; Various materials.