

# Overview of New York City's Labor Market and Workforce System

**Presentation to the Copenhagen Delegation**

**October 4, 2014**

Lesley Hirsch

Director, New York City Labor Market Information Service

City University of New York Graduate Center

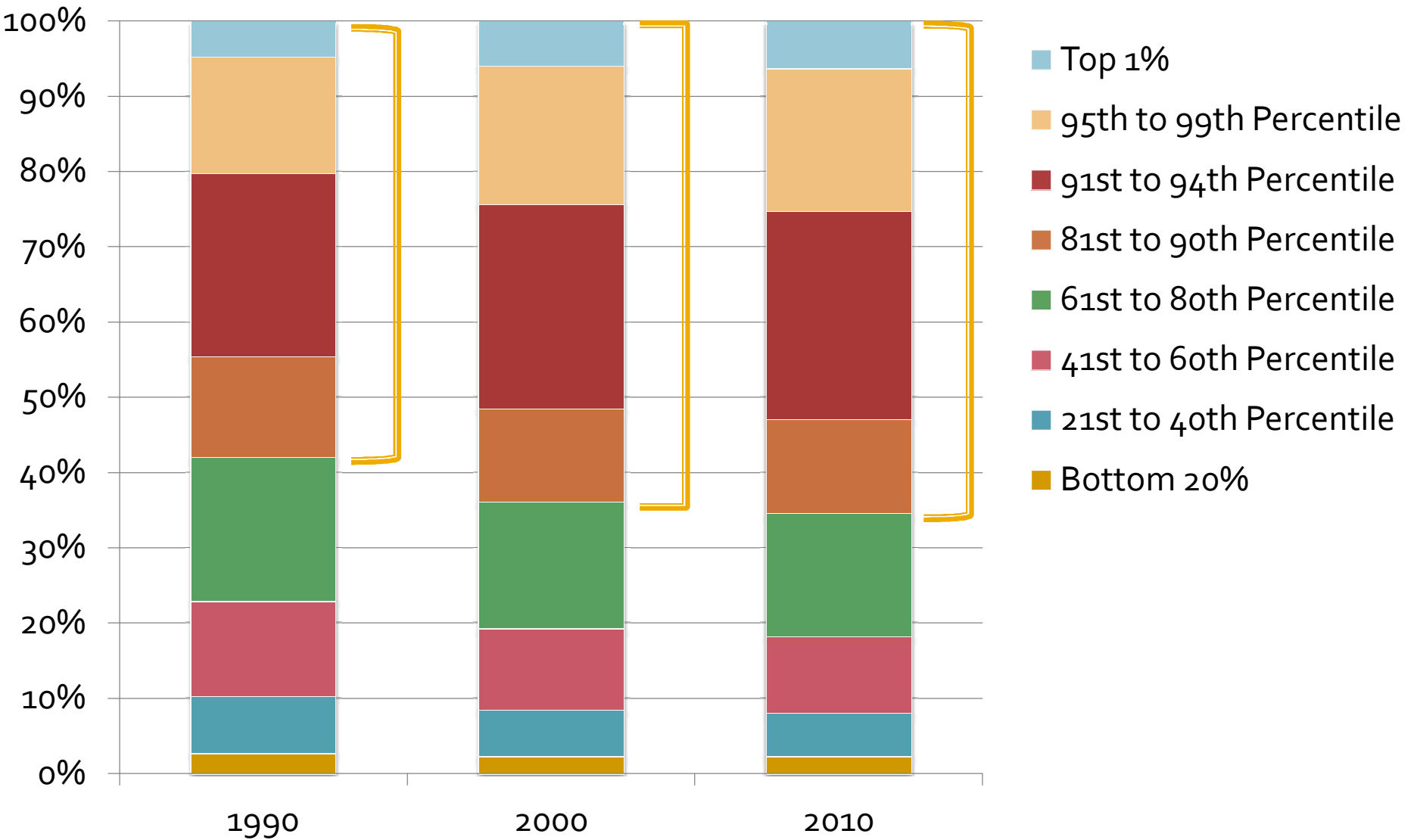
# City University of New York

- Serves over 500,000 degree and continuing education students
- 24 colleges on 17 campuses citywide
- Current foreign-born undergraduates harken from 135 countries
- Tradition of partnerships with K-12 schools, economic development initiatives, immigration and financial advice services, and other community outreach.

# New York City Labor Market Information Service (NYCLMIS)

- Began in 2008 as a joint initiative of the New York City Workforce Investment Board and the City University of New York and is housed at the CUNY Graduate Center.
- We have become the go-to place for timely, action-oriented intelligence about New York City's labor market. We conduct research studies, provides training and strategic consultation, and hold forums that raise awareness of work-related issues.
- The researchers, industry experts, and policy professionals that staff NYCLMIS help education and workforce development practitioners and policy makers make informed decisions so that they can help jobseekers to achieve success in the labor market.

# Share of Total Income Held by Household Income Quintile, New York City, 2012



SOURCE | The Concentration of Wealth in New York City, CUNY

# Comparison of the labor supply, US and New York City

	United States	New York City
Poverty	14.9%	19.9%
Race/ethnicity		
Asian	6%	13%
Black	13%	26%
Hispanic	17%	29%
White	66%	33%
Foreign born	13%	37%
Speak other language at home and speak English less than "very well"	9%	23%
Educational attainment		
Less than high school	12%	21%
High school or equivalent	30%	25%
Some college or Associate	27%	21%
Bachelor's or more	32%	34%

**SOURCE** | American Community Survey. For New York City, 2008-2012 combined sample; for the US, 2013.

# New York City's Population Churn

**Cumulative Estimates of the Components of Population Change for  
New York State, New York City and Counties: April 1, 2010 to July 1, 2013**

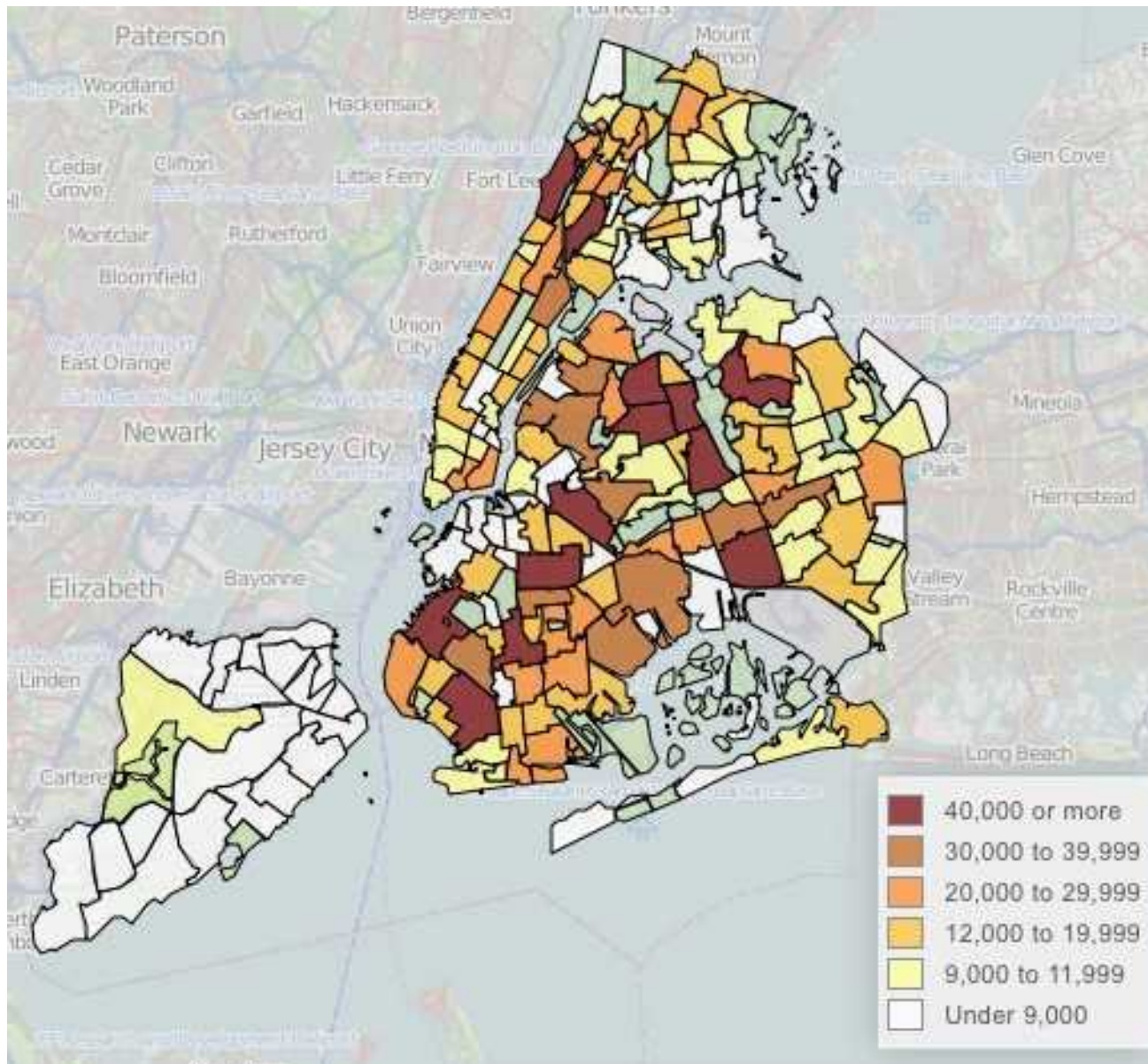
Geographic Area	Total Population Change	Natural Increase	Net Migration		
		(Births- Deaths)	Total	Net International Migration	Net Domestic Migration
<b>New York City</b>	<b>230,704</b>	<b>213,934</b>	<b>24,979</b>	<b>229,627</b>	<b>-204,648</b>
Bronx	33,625	40,859	-6,547	41,307	-47,854
Brooklyn	87,449	83,634	6,605	66,193	-59,588
Manhattan	40,286	30,777	11,330	42,681	-31,351
Queens	65,453	51,927	16,243	75,728	-59,485
Staten Island	3,891	6,737	-2,652	3,718	-6,370

Note: The estimated components of population change will not equal the numerical population change because of a small residual after controlling to the national totals.

Source: Population Division, U.S. Census Bureau

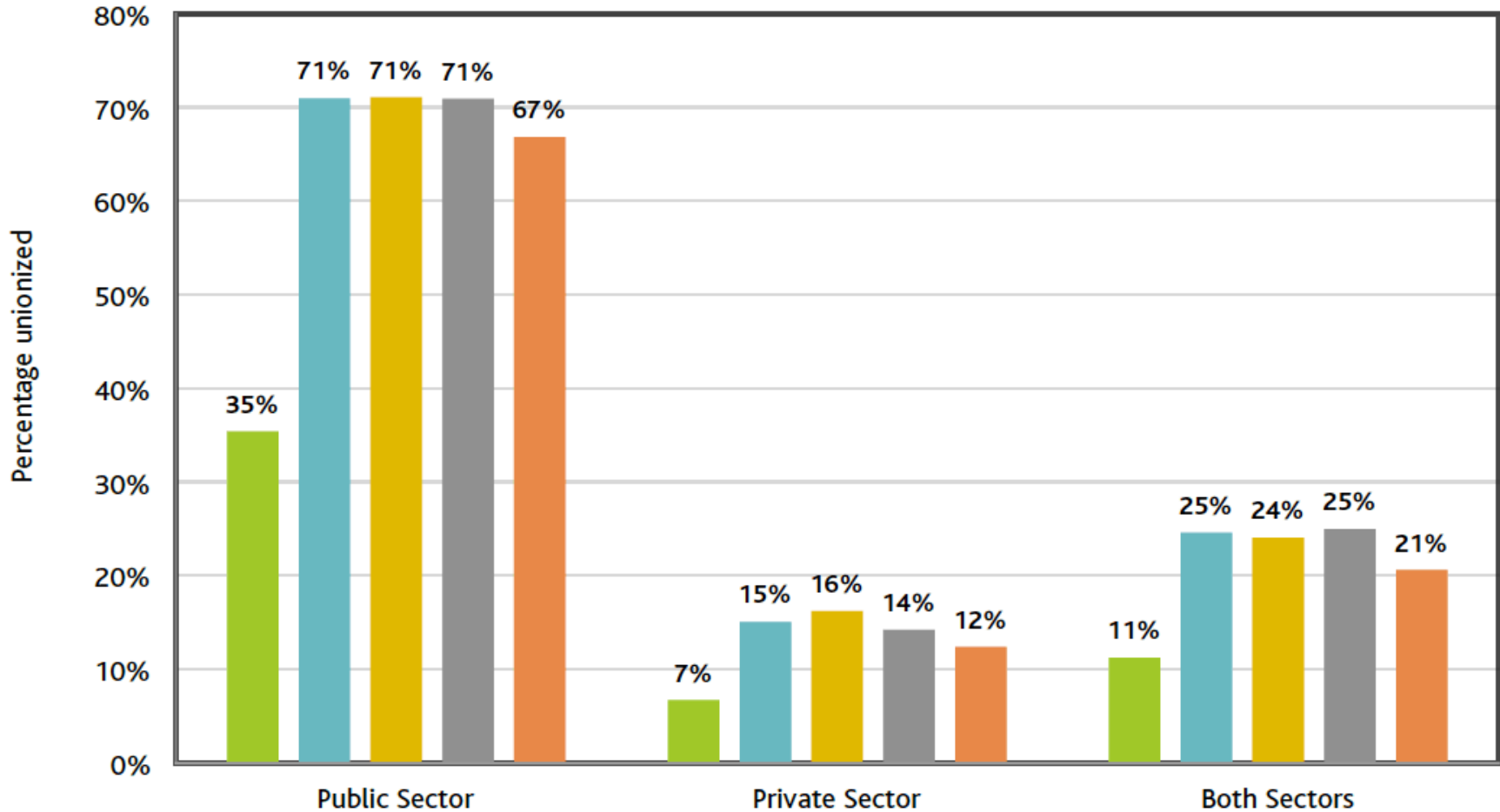
# Where New York City's Immigrants Live

Live <http://www.nyc.gov/html/dcp/html/census/nny.shtml>



# Union Density by Sector, the US, New York State, New York City, and the Metro Area

■ United States ■ New York State ■ NYC (5 Boroughs) ■ NYS Excluding NYC ■ NYC Metro Area

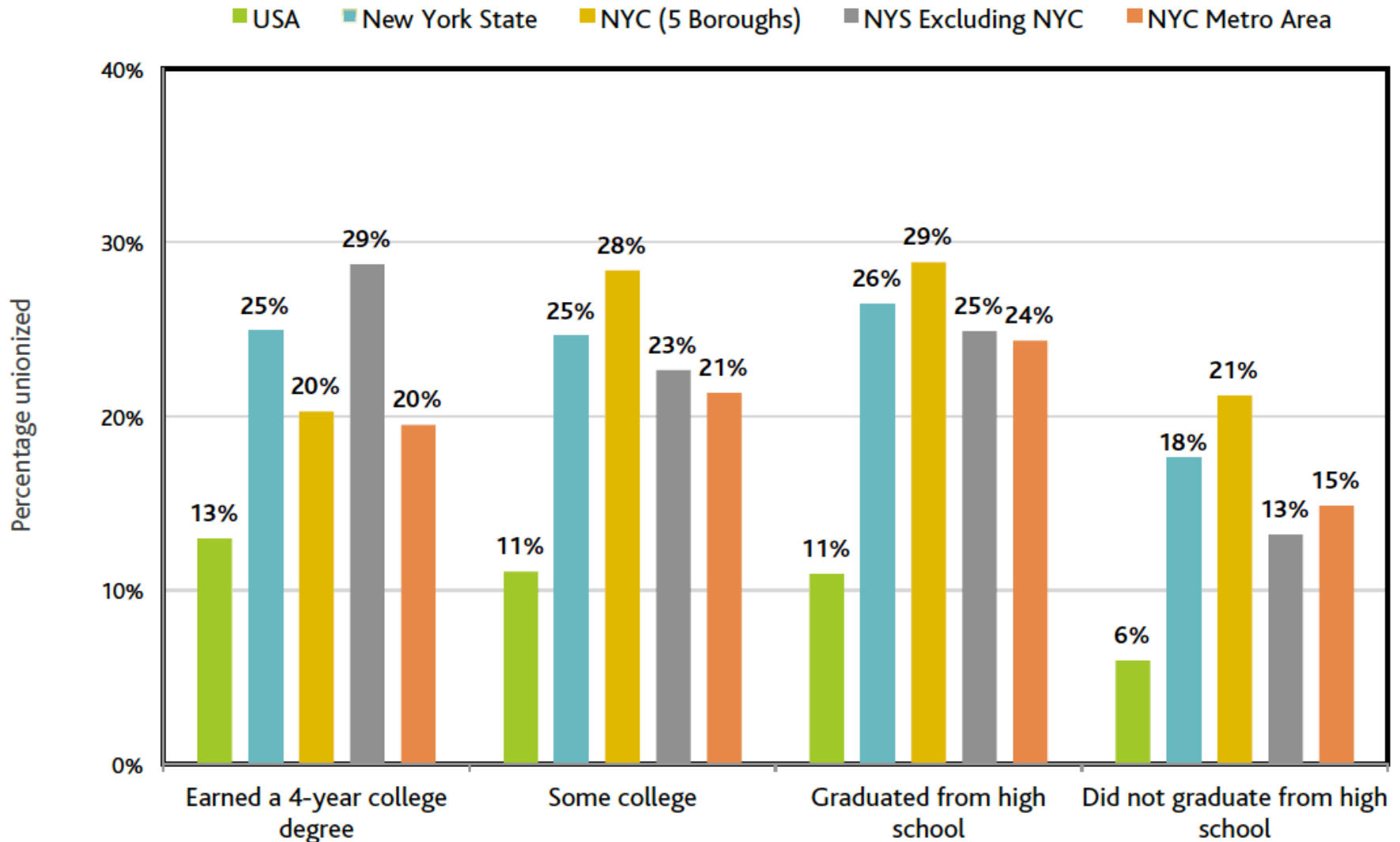


Percentages shown for 2013-14 include the 18 months from January 2013 to June 2014.

Source: U.S. Current Population Survey, Outgoing Rotation Group, 2013 - June 2014.



# Union Density by Educational Attainment in the US, New York State, New York City, and the Metro Area



Percentages shown for 2013-14 include the 18 months from January 2013 to June 2014.  
Source: U.S. Current Population Survey, Outgoing Rotation Group, 2013 - June 2014.

# Union Density by Industry, New York City, New York State and the US

Industry	New York City (5 boroughs)	New York State	United States
TOTAL (All Industries)	24.5%	24.7%	11.8%
Agriculture and mining	NA	4.3%	4.3%
Utilities	49.7%	54.4%	27.9%
Construction	27.4%	30.6%	15.5%
Food manufacturing	5.8%	13.6%	15.0%
Textile and apparel manufacturing	14.5%	13.9%	4.0%
Paper products and printing	20.9%	23.6%	12.7%
Other manufacturing	14.6%	15.8%	10.5%
Wholesale grocery and beverages	19.6%	18.3%	10.0%
Other wholesale trade	10.3%	8.1%	3.0%
Retail grocery stores	13.0%	24.0%	17.7%
Pharmacy and drug stores	11.8%	9.5%	4.9%
Department and discount stores	13.7%	5.9%	2.6%
Other retail trade	4.7%	3.9%	1.9%
Air transportation	32.6%	43.7%	42.9%
Truck transportation	14.7%	17.9%	10.2%
Bus service and urban transit	75.2%	65.0%	42.5%
Postal service	72.9%	74.2%	63.8%
Couriers and messengers	24.4%	29.7%	29.1%
Other transportation	24.8%	33.2%	37.0%
Newspaper, periodical and book publishing	10.0%	12.8%	6.7%

Source: U.S. Current Population Survey, Outgoing Rotation Group, 2003-June 2014.

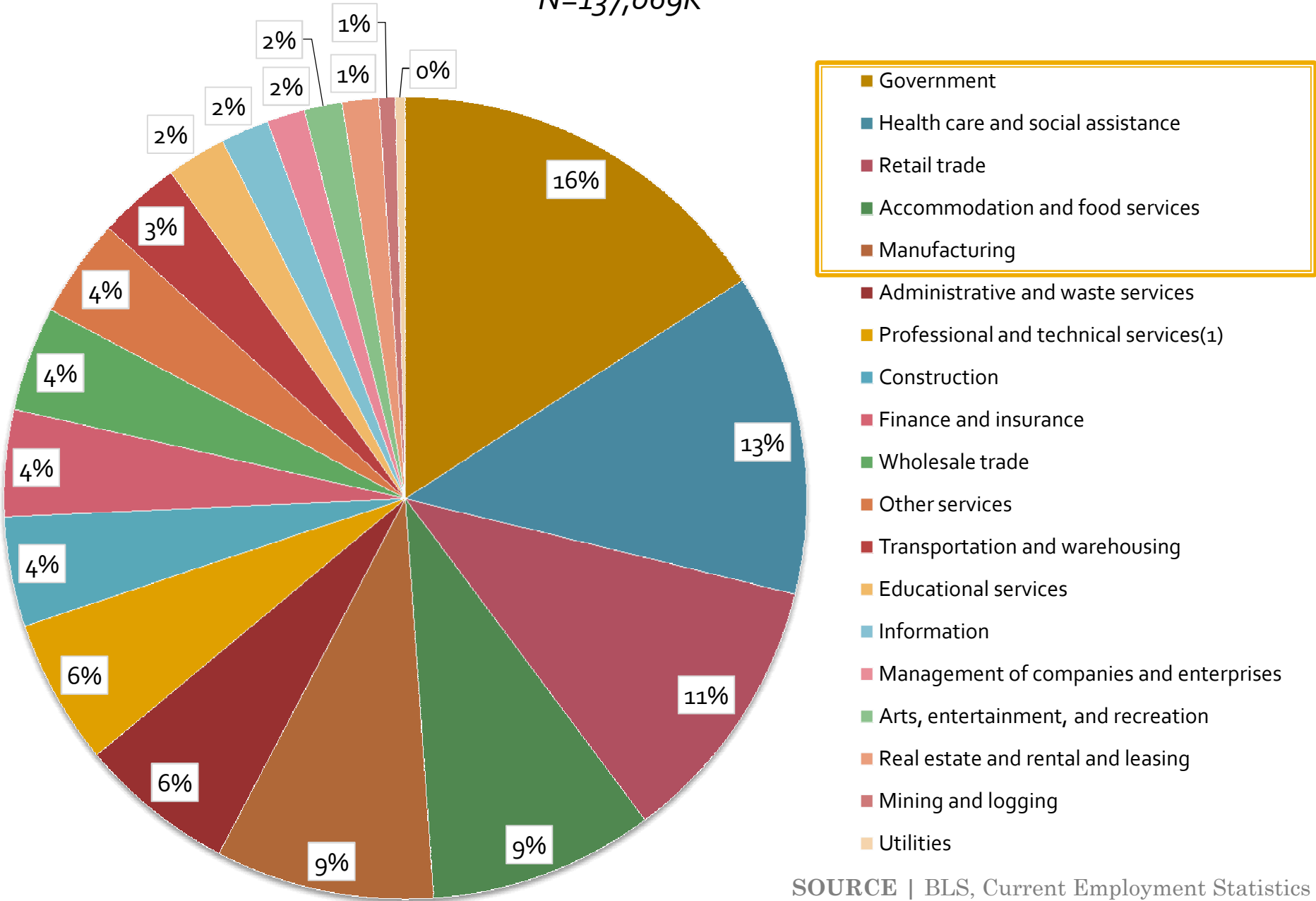
# Union Density by Industry, New York City, New York State and the US

Industry	New York City (5 boroughs)	New York State	United States
Motion pictures and video	21.4%	18.6%	11.5%
Radio, television and cable broadcasting	20.9%	16.3%	7.4%
Wired and other telecommunications	38.7%	36.6%	17.5%
Other information services	NA	29.3%	19.1%
Finance, insurance and real estate	14.3%	10.4%	2.6%
Building and security services	20.1%	14.3%	4.5%
Other management and professional services	4.7%	4.5%	1.9%
Elementary and secondary schools	67.3%	69.8%	41.3%
Other educational services	24.2%	28.2%	13.4%
Offices of physicians and other health providers	8.2%	5.2%	2.2%
Hospitals	47.1%	40.0%	14.4%
Nursing care facilities	41.0%	29.6%	7.5%
Home health care services	41.3%	34.6%	9.1%
Child day care services	13.2%	10.9%	3.2%
Other health care and social assistance	27.8%	24.4%	9.3%
Performing arts, museums, and sports	21.4%	22.6%	12.1%
Amusement, gambling and recreation	8.8%	6.5%	4.9%
Hotels	34.0%	21.8%	7.7%
Restaurants, food service & drinking places	3.7%	2.8%	1.4%
Other private-sector service industries	7.6%	7.0%	3.1%
Public administration	65.0%	68.2%	32.0%

Source: U.S. Current Population Survey, Outgoing Rotation Group, 2003-June 2014.

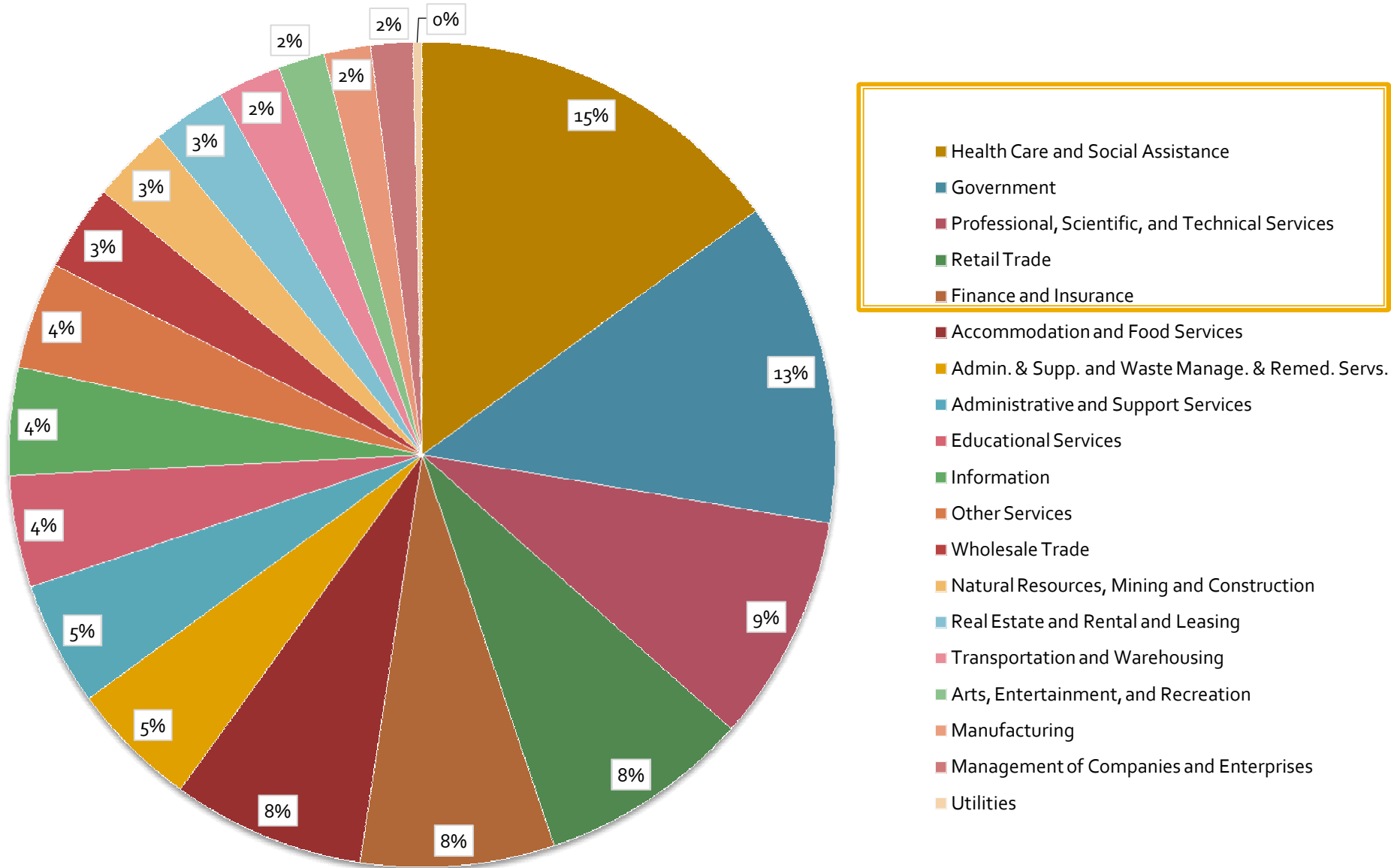
# US Employment by Sector

*N=137,069K*

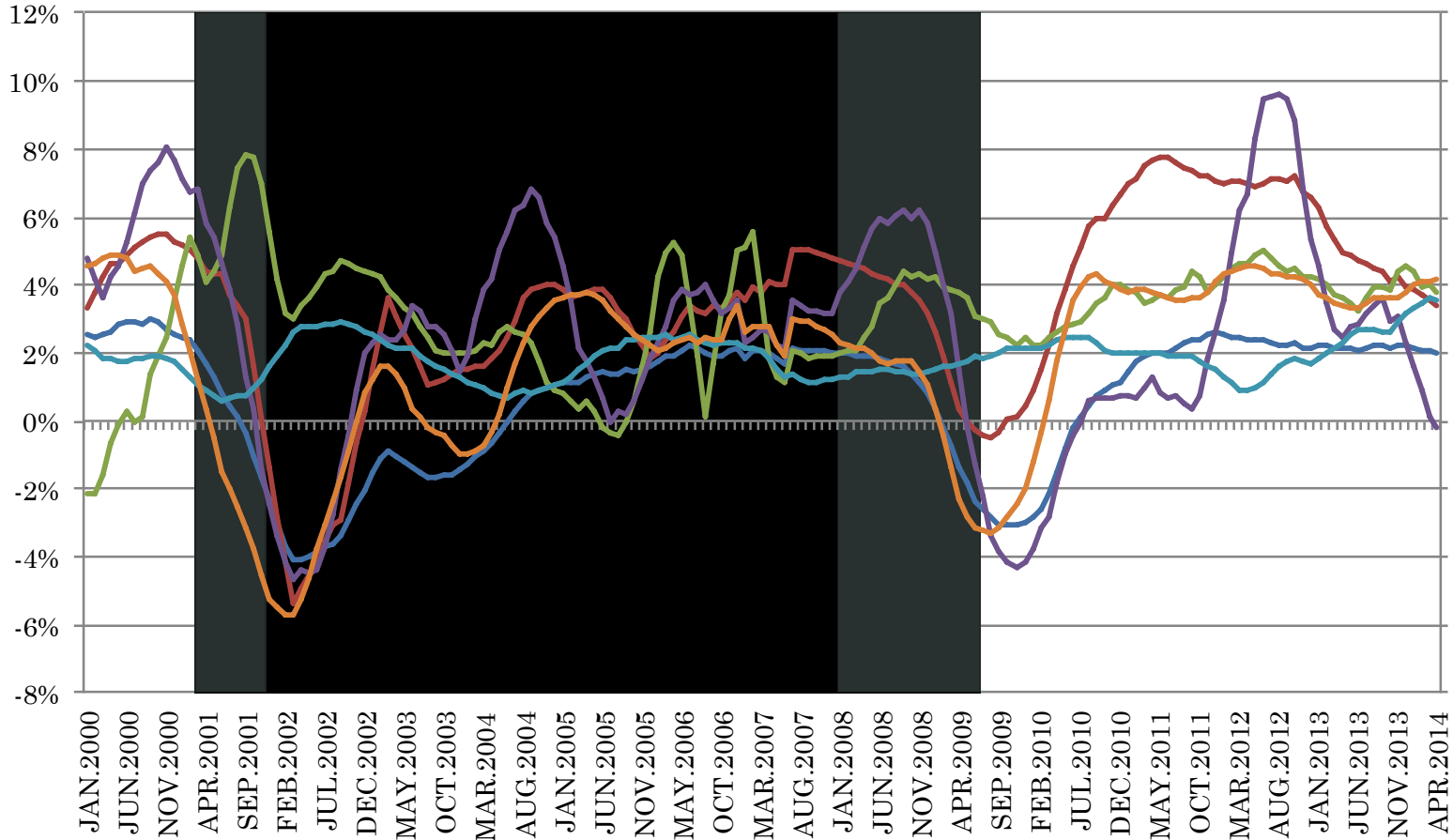


# NYC Employment by Sector, August 2014

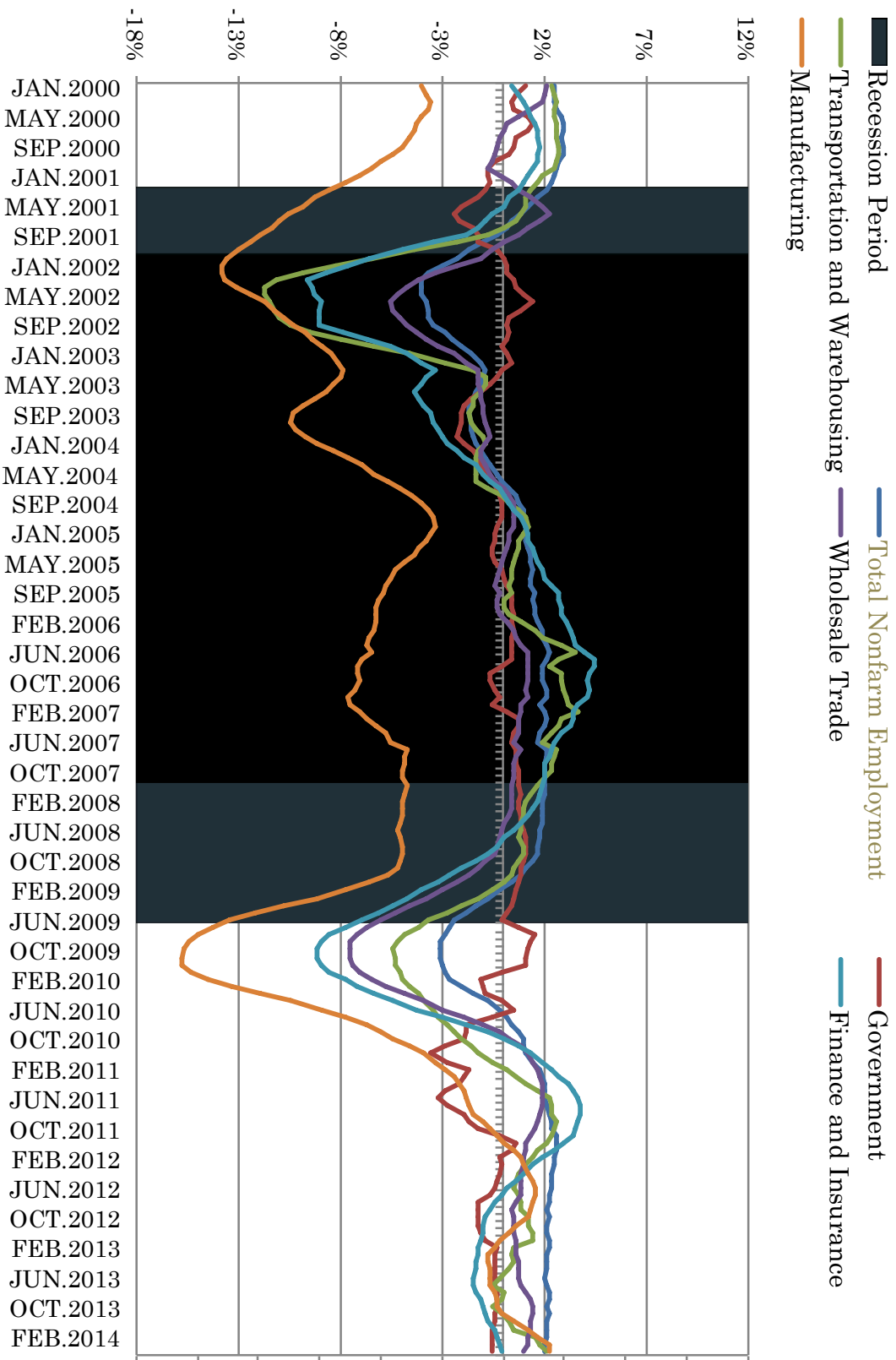
*N=4,056.3K*



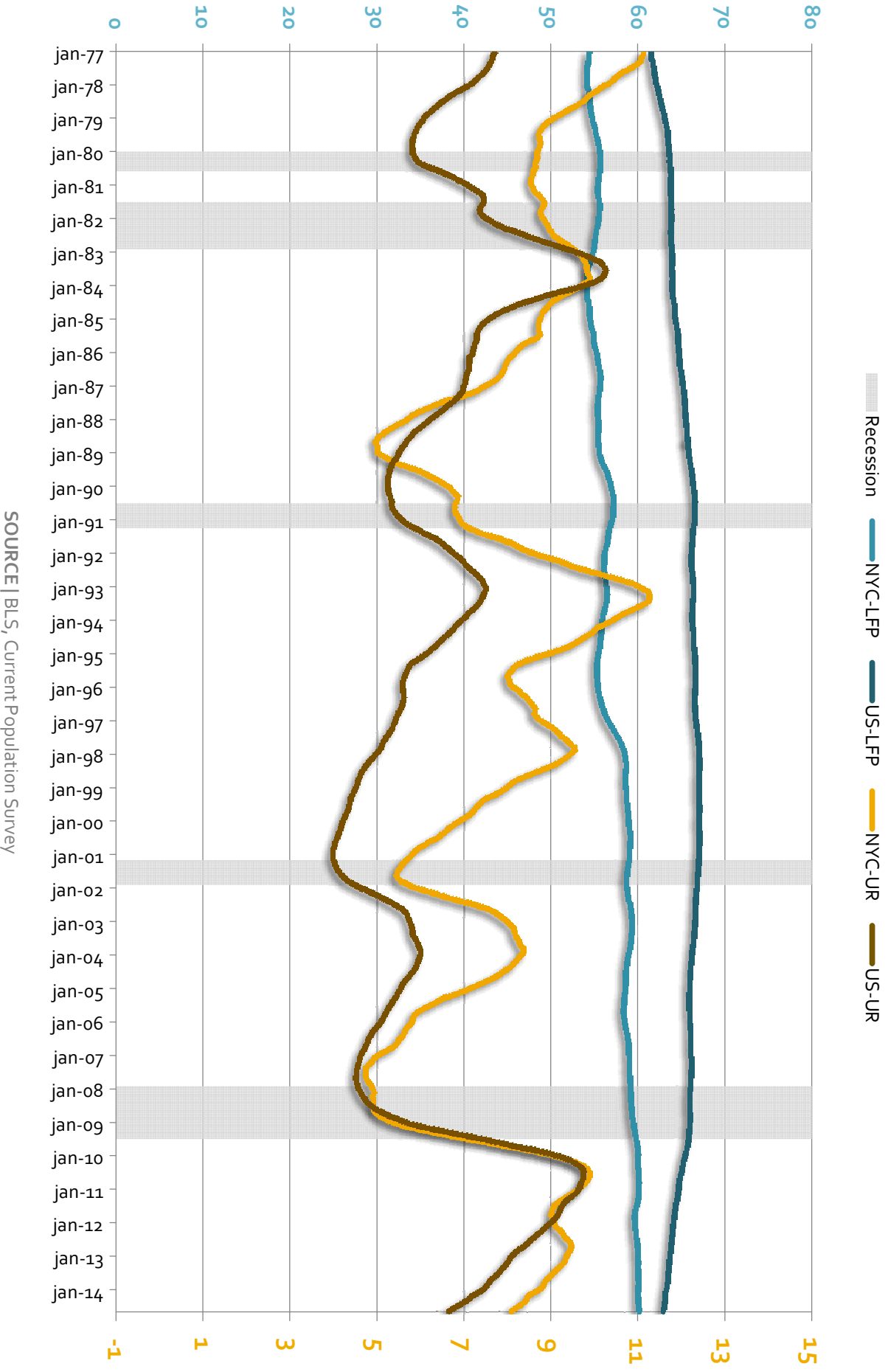
# Year-Over-Year Percentage Job Change: Top 5 Performing Sectors, 2000-2014



# Year-Over-Year Percentage Job Change by Sector, 5 Lowest Performing Sectors, 2000-2014



# Labor Force Participation and Unemployment Rates in New York City and the US, 1977-2014

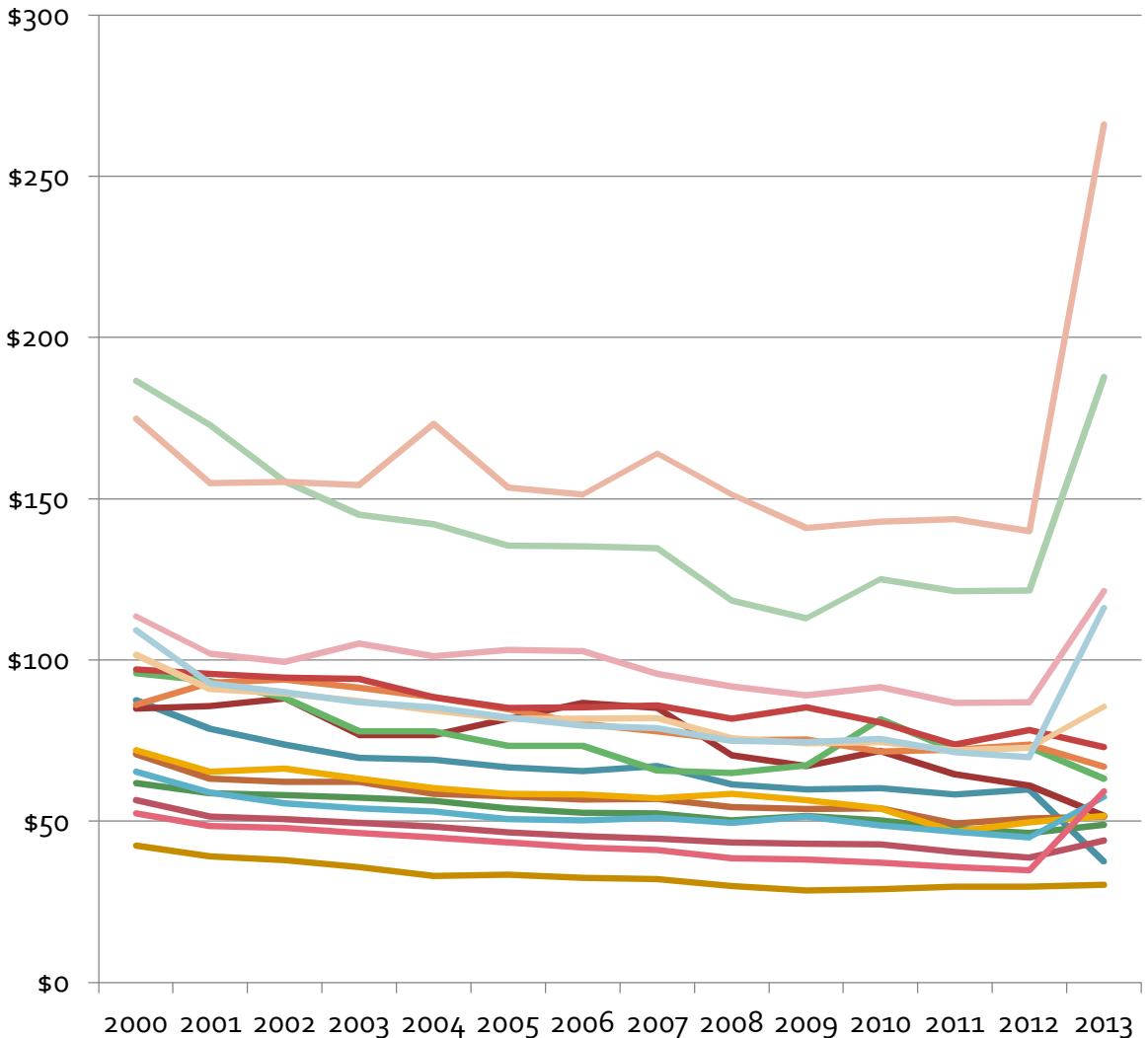


SOURCE | BLS, Current Population Survey



# Real Annual Average Wages by Sector, New York City, 2000-2013

Tusinde



- Accommodation and Food Services
- Real Estate Rental and Leasing
- Other Services
- Health Care and Social Assistance
- Administrative & Support & Waste Mgmt
- Manufacturing
- Transportation and Warehousing
- Educational Services
- Retail Trade
- Arts, Entertainment, and Recreation
- Public Administration
- Construction
- Wholesale Trade
- Professional, Scientific, and Technical Services
- Information
- Management of Companies and Enterprises
- Finance and Insurance

SOURCE | NYSDOL, Quarterly Census of Employment and Wages  
Adjusted for inflation using CPI-U for the NYC Metro Area

# Measures of Labor Under-Utilization, the US and New York City\*

	United States	New York City
Unemployed** 15 weeks or longer	3.5%	5.6%
Job losers, or completed temporary assignment	3.5%	4.6%
Total unemployed	6.8*	8.3%
Total unemployed, plus discouraged	7.2%	9.0%
Total unemployed, plus marginally attached***	8.1%	10.0%
Total unemployed, plus marginally attached and working part-time for economic reasons	12.9%	14.6%

\*Expressed as a percent of the civilian labor force

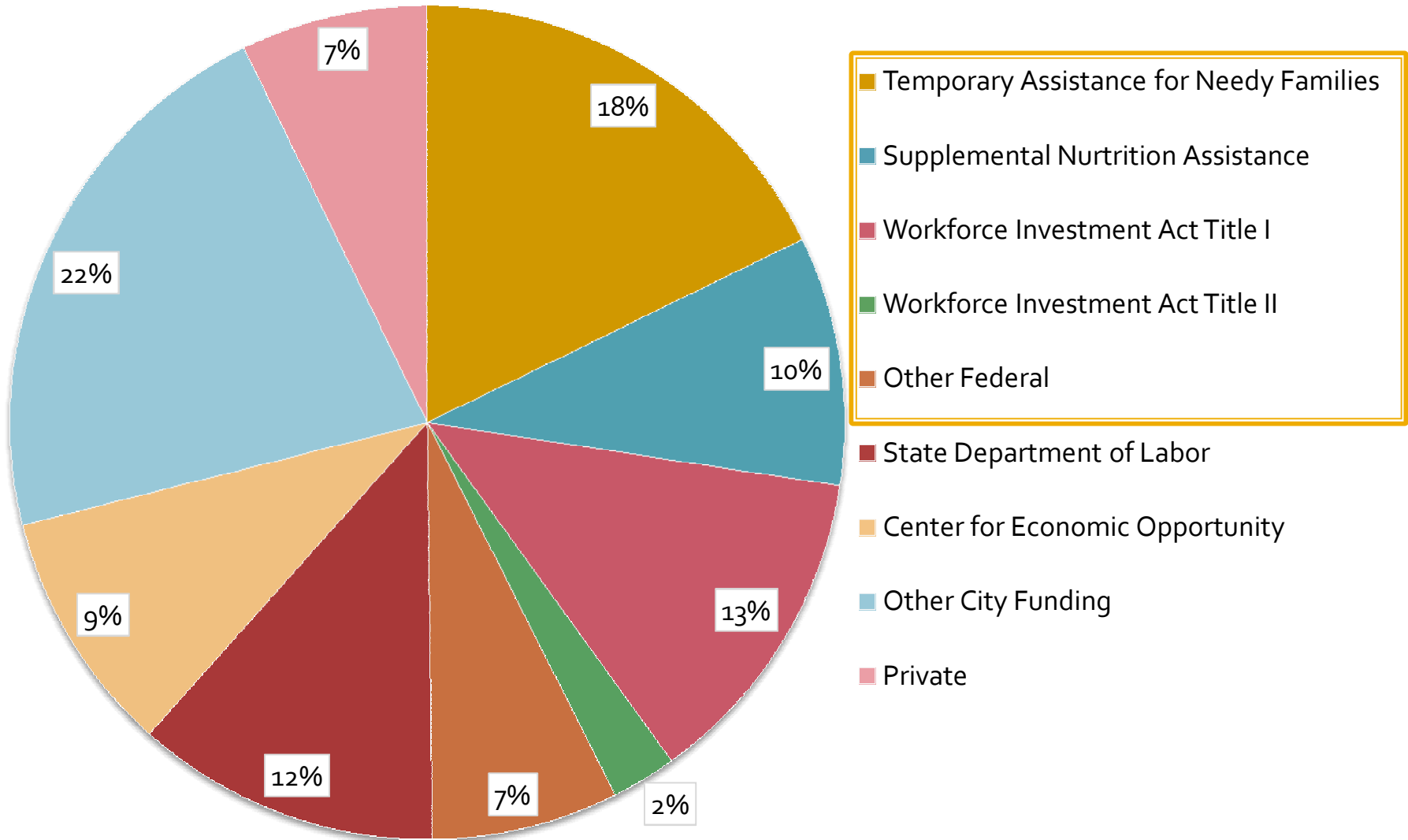
\*\*Not employed and looking for work in the past four weeks

\*\*\*Includes the discouraged

**SOURCE** | Bureau of Labor Statistics, Current Population Survey, July 2013 through June 2014

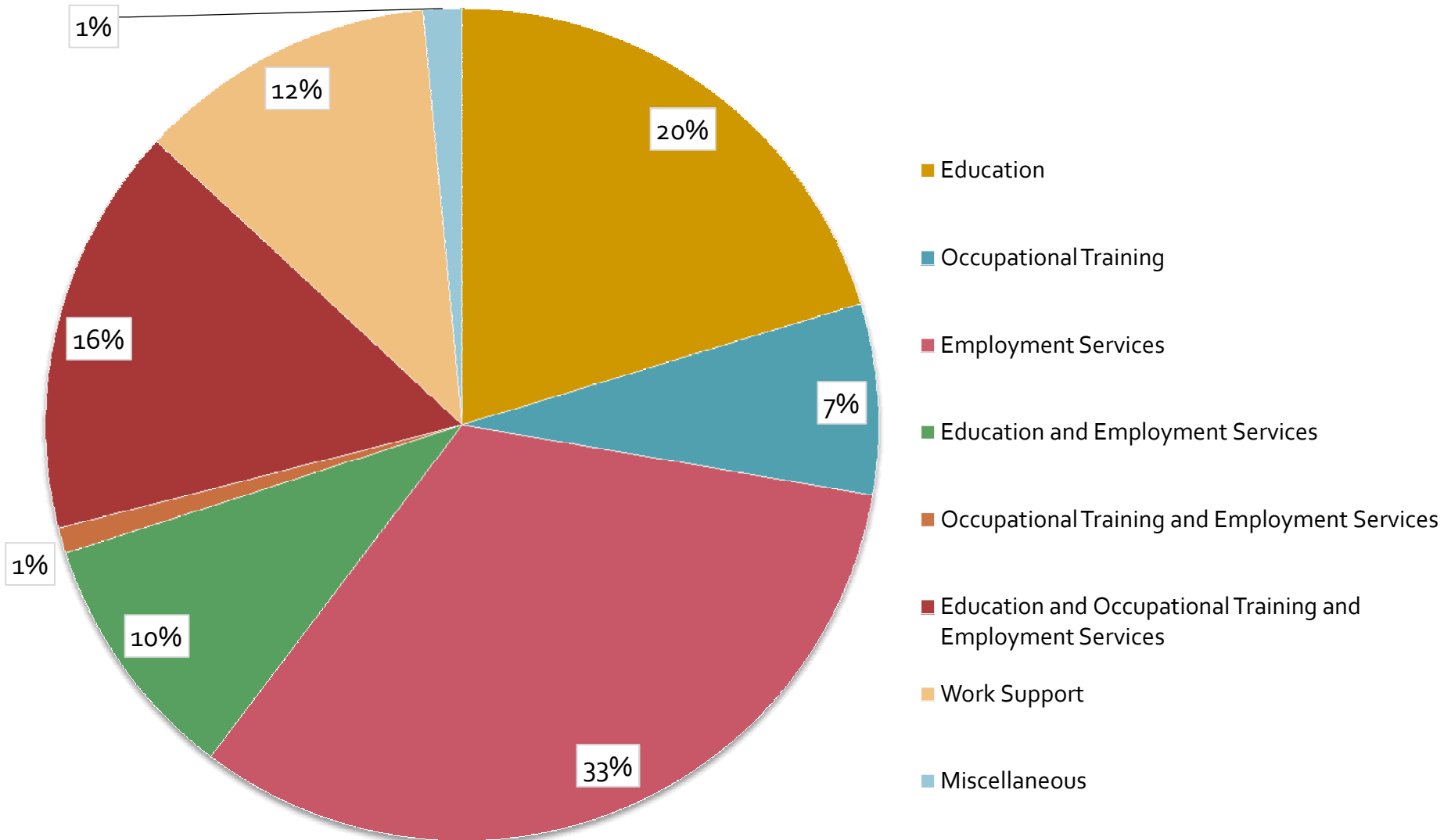
# Sources of New York City's Workforce Funding, FY 2014

Total: \$518,934,838



# Breakdown of New York City Workforce Spending by Service Type, FY 2014

Total: \$518,934,838



NOTE | Approximately 10% of the total budget was spent on subsidized work embedded within the various "employment services" categories. A majority of the subsidized work funds were used in the Summer Youth Employment Program.

# City Workforce System's "Alphabet Soup"

- Administration for Children's Services
- Center for Economic Opportunity
- City University of New York
- Department for the Aging
- Department of Corrections
- Department of Probation
- Department of Small Business Services
- Department of Youth and Community Development
- Human Resources Administration
- Mayor's Office of Immigrant Affairs
- Mayor's Office of Adult Education
- New York City Housing Authority
- And hundreds of private sector "third-party" providers

# Free and Low-Cost Services for Immigrants

- School system navigation services
- Free legal assistance related to immigration status (including CUNY's *Citizenship Now!* Program)
- Services for victims of domestic violence and trafficking
- Employment rights services for immigrant workers
- Legal services for immigrant youth
- Deferred Action for Childhood Arrivals (DACA)
- Naturalization test preparation
- Financial empowerment *promotoras* program
- ACCESSNYC, multilingual program to assess eligibility for public benefits
- Refugee health screening and healthcare services
- *We Are New York* television series for immigrant New Yorkers
- Center for Immigrant Education and Training at La Guardia Community College
- And more services from the State of New York Bureau of Refugee and Immigrant Assistance



**Thank you!**

**Lesley Hirsch**

**Director, New York City Labor Market Information Service**

**City University of New York Graduate Center**

**365 Fifth Avenue, Room 6202**

**New York, NY 10016**

**212.817.2031**

**[lhirsch@gc.cuny.edu](mailto:lhirsch@gc.cuny.edu)**