



Dear Daughter/Sen_sing_inannainanna (Russ, Shiva, Klein) #5, 2022
45 min. live performance og a/v skulptur installation 500x500x350 cm
SMK Statens Museum for Kunst November 2022



Dear Daughter/Sen_sing_inannainanna (Russ, Shiva, Klein) #5, 2022
45 min. live performance og a/v skulptur installation 500x500x350 cm
video dokumentatio, 1 minuts uddrag: http://nannalyscholthansen.com/?page_id=1120





Kore (Ningal), 2022
200x300x100 cm, akrylfiberglas, pigment, stål

Dear Daughter/Sen_sing_inannainanna (Russ, Shiva, Klein) #4
45 minutes live performance
installation af sand, pigment, betonler, kroppler, audio tech

Welcome to the Womb

Tabita Rezaire
Nanna Lysholt Hansen
Anna Aagaard
Sahar Jamili

Gloria Foyer, curateret by Ida Schyum

Roskilde Festival, 2022





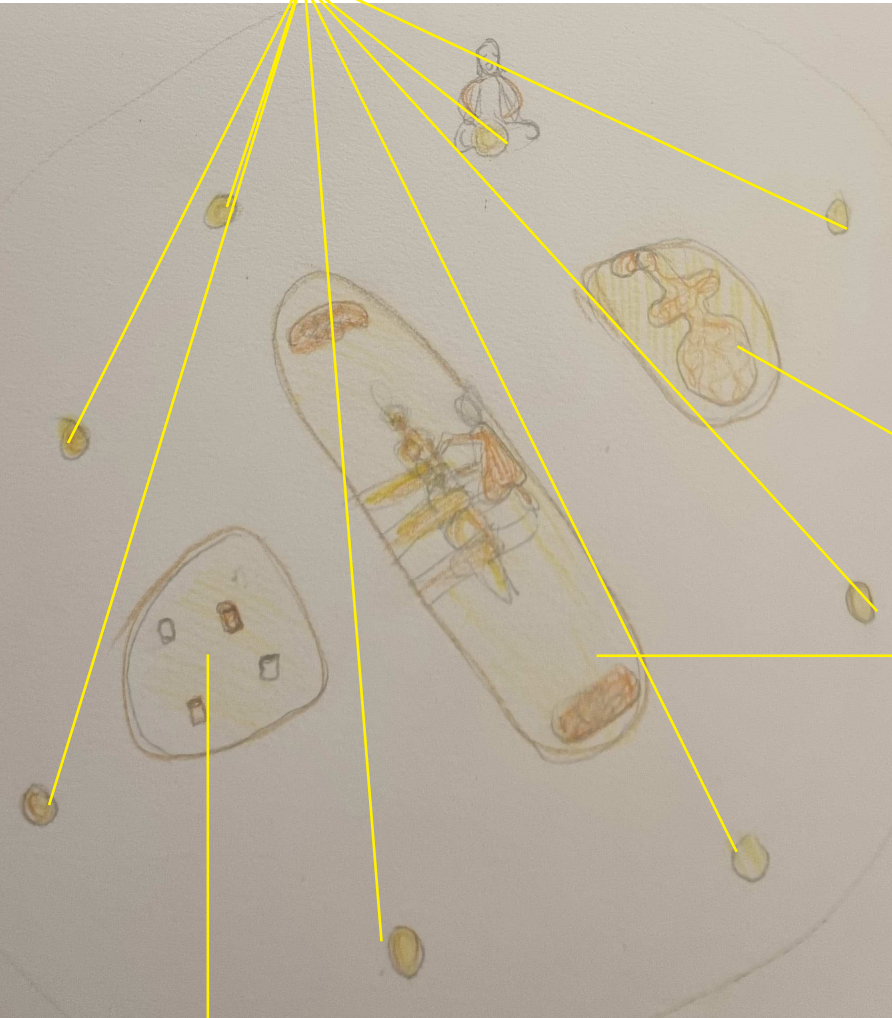
Kore (Nammu), 2021, Betonler, pigment, træ, metal, 230x40x40 cm (x2) / 130x40x40 cm (x4), 2019-2021
Dear Daughter/Sen_sing_inannainanna (Russ, Shiva, Klein), 2019, 25'52'' HDV, sound, collaboration with Stathis Tsemberlidis
<https://vimeo.com/355939140>



Voice of Nammu, 2021
60 min. performance workshop i samarbejde med F.eks på Utzon Center i Aalborg, 2021

Skitser og materialetests: funktionelle skulpturer/workshop/performance
Rhapsodies of Inanna

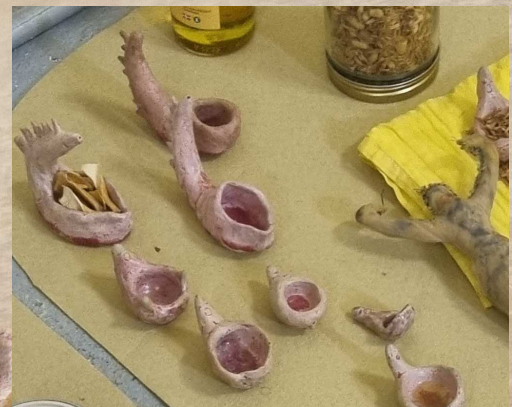
Nammu Birth Voices, 2023
doulastemme/Nammu Birth tools
60 minutter, på sandfarvet tekstil



Kore (soft), 2023
tekstil, 170x70x50 cm
på orange/gult tekstil



Closing the Bones(2023)
med jordemoder M.O.
60 minutter performance
på orange/gult tekstil



Rhapsodies of Inanna (2023)
mini speakers med nyt lydværk
60 minutter, på sandfarvet tekstil

