

# HØJDEVANGENS SKOLE

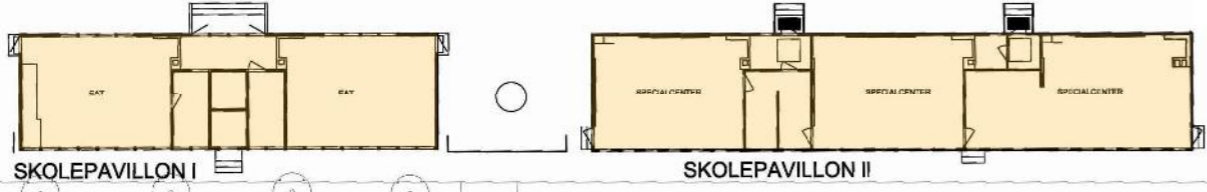
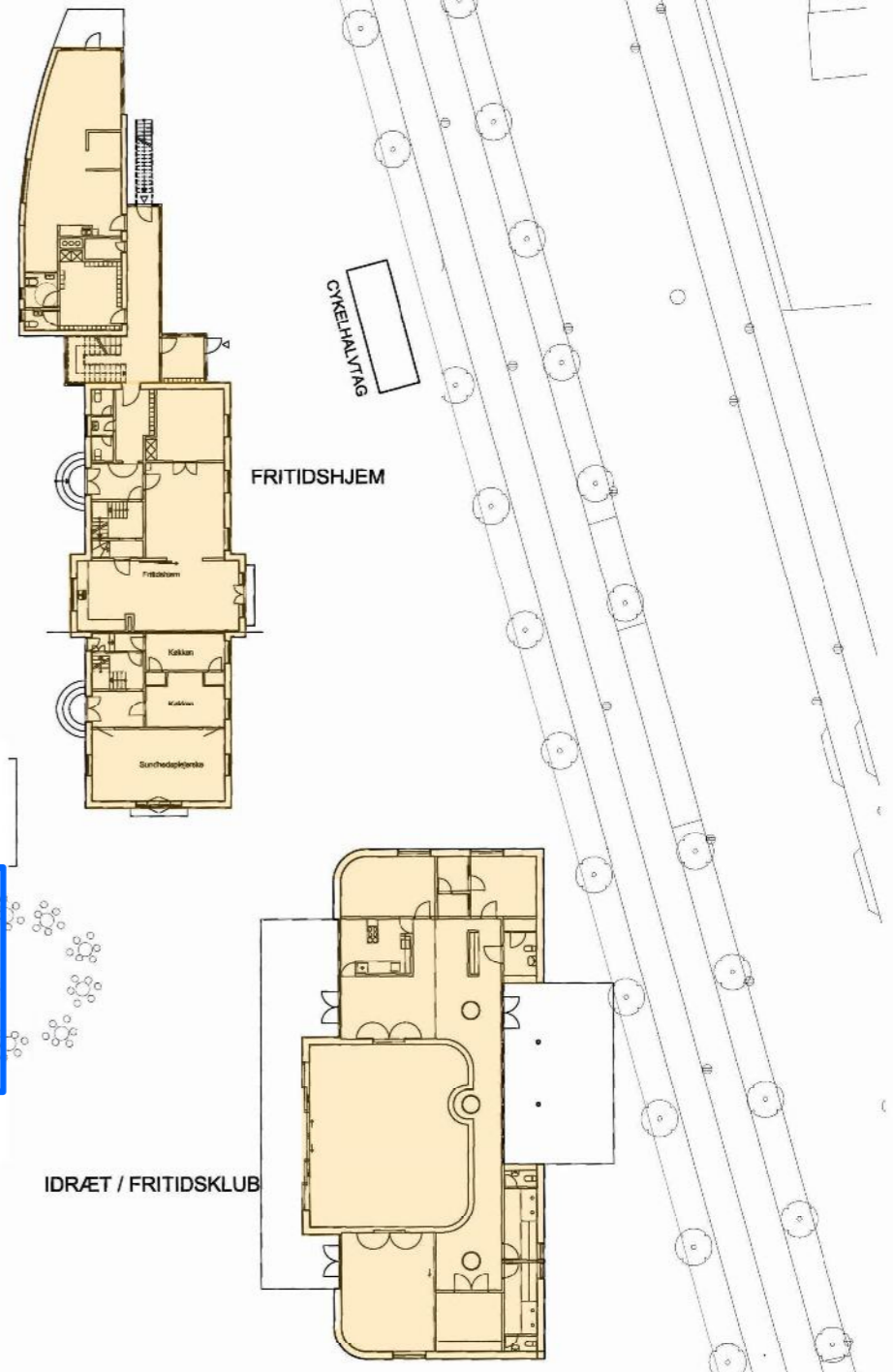
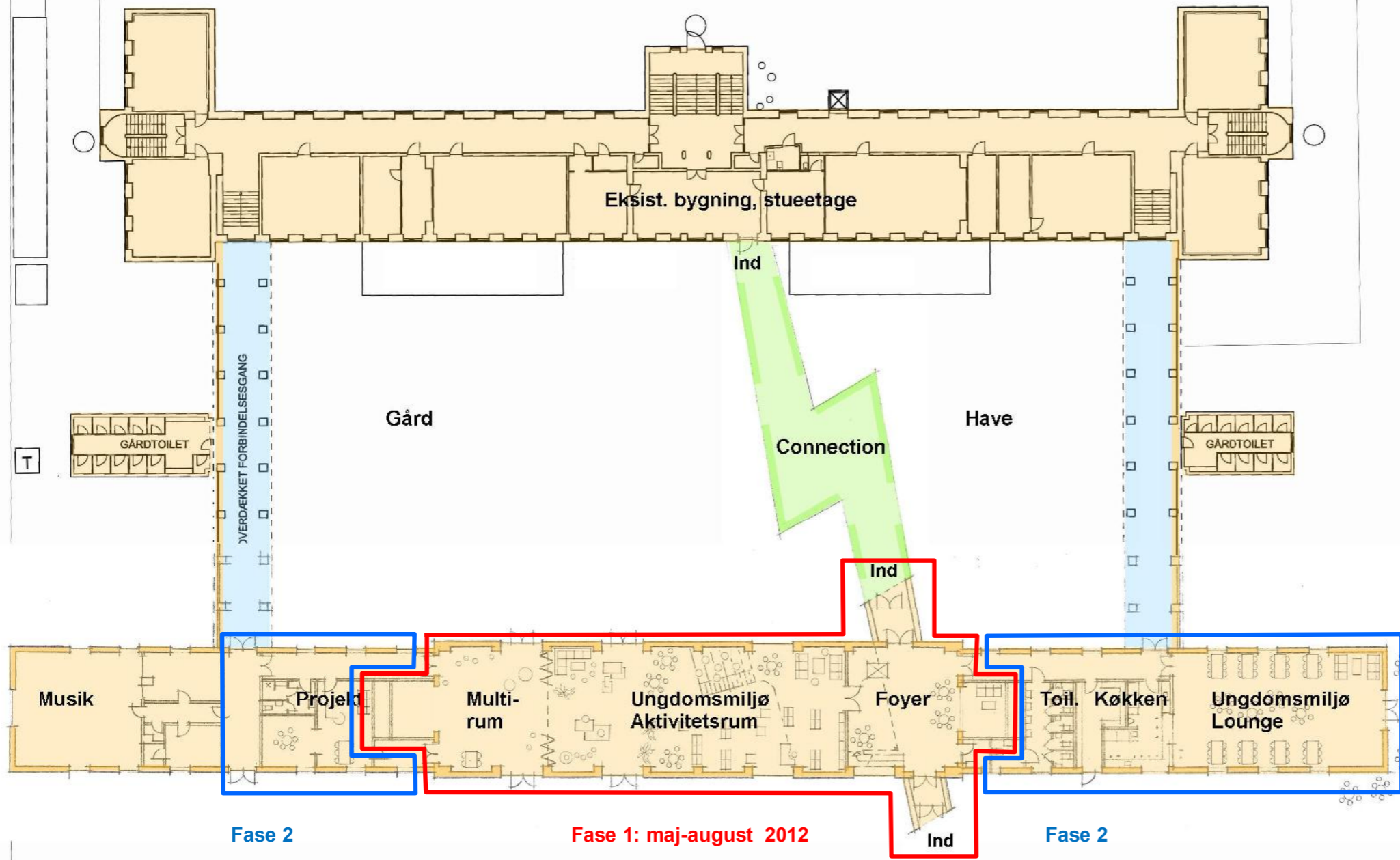
## ETABLERING AF UNGDOMSMILJØ

Januar 2012

KHS arkitekter as

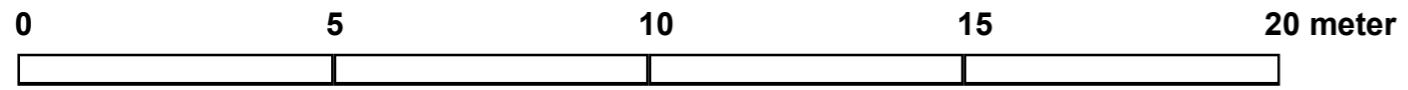
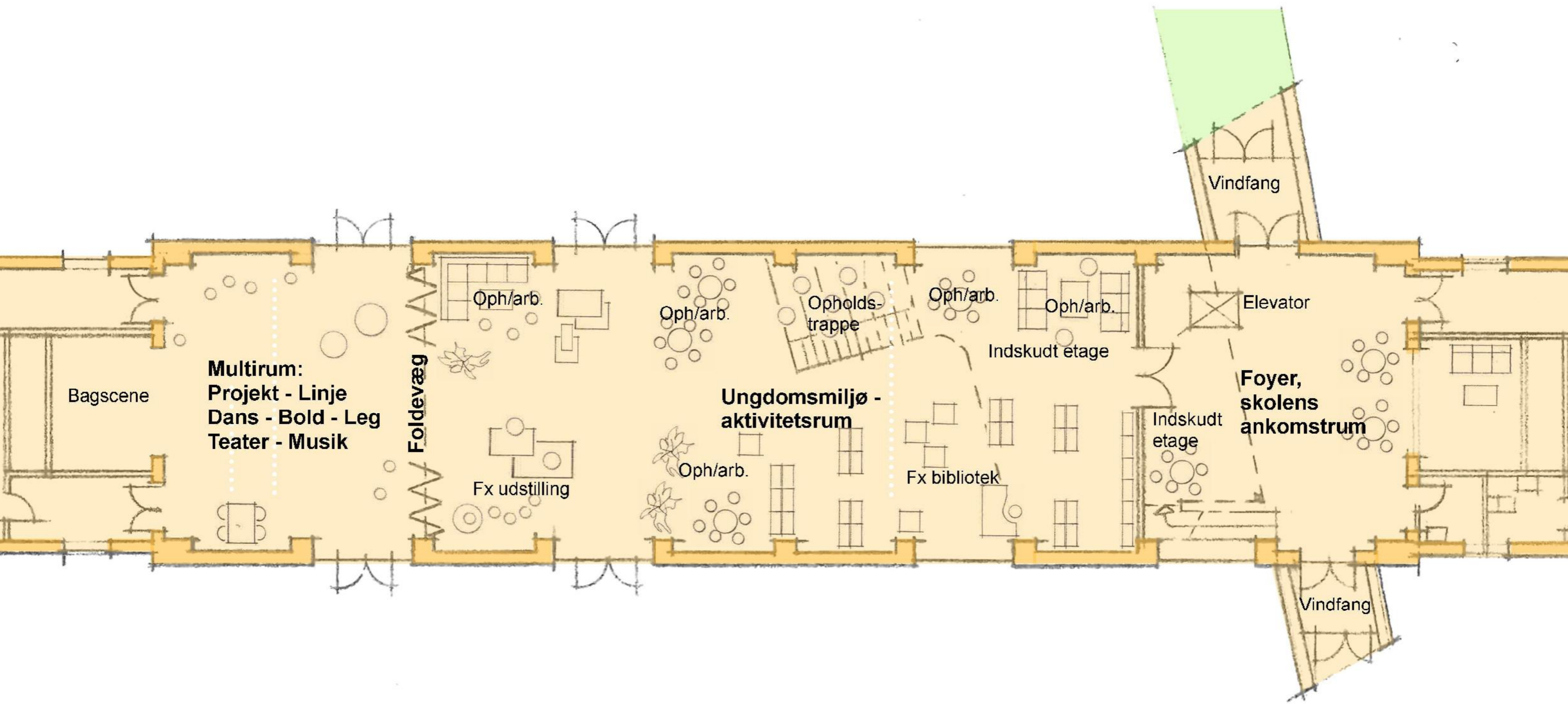




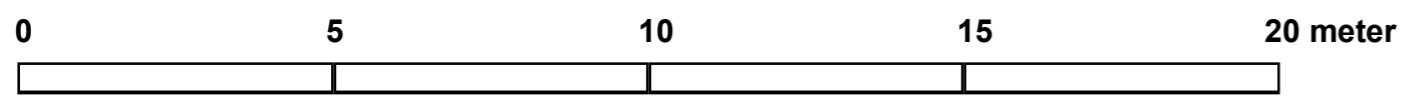
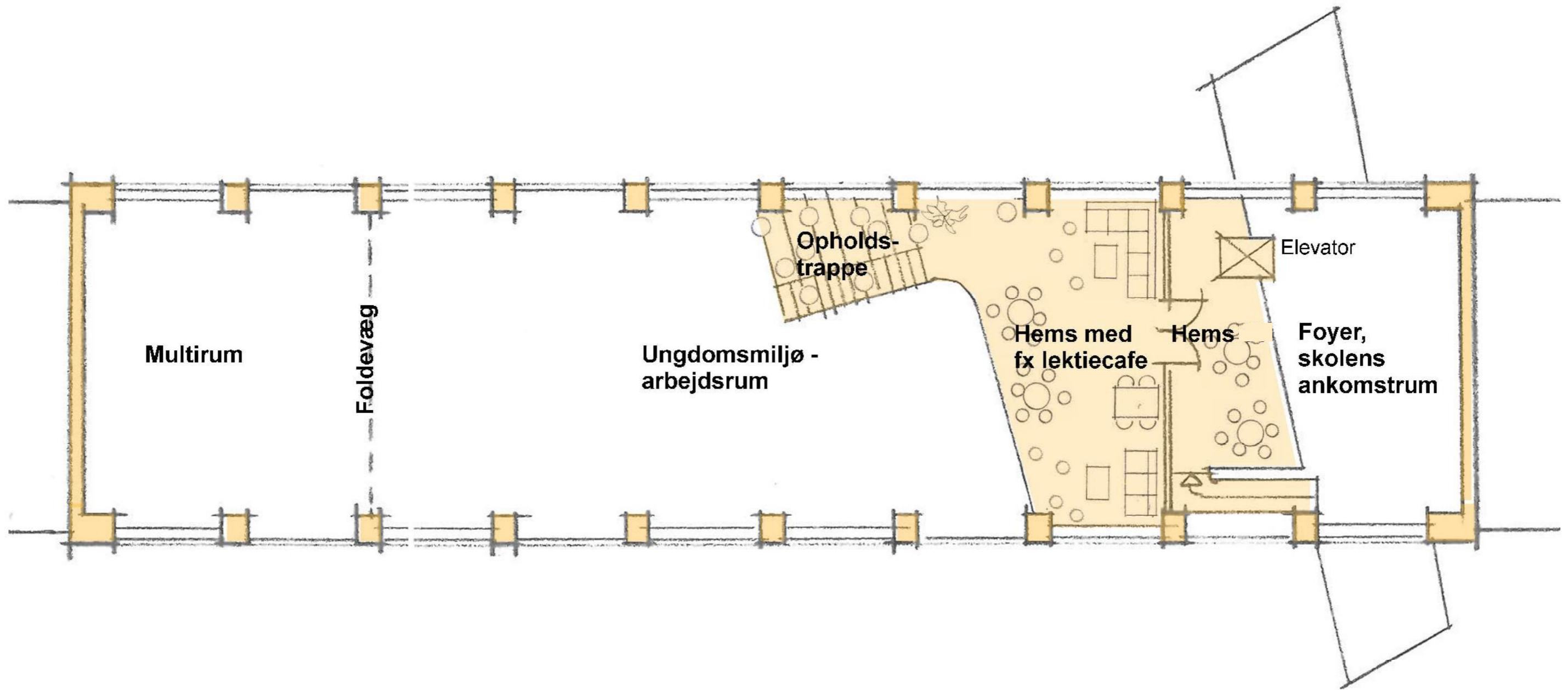


Oversigtsplan, stueetage - fremtidige forhold





Planskitse: Vindfang - Foyer - Ungdomsmiljø aktivitetsrum - Multirum



Målestok 1:60 ved udprintning på A1 (60x84 cm) uden tilpasning

**Planskitse: Hemse og opholdstrappe i ungdomsmiljøet**



