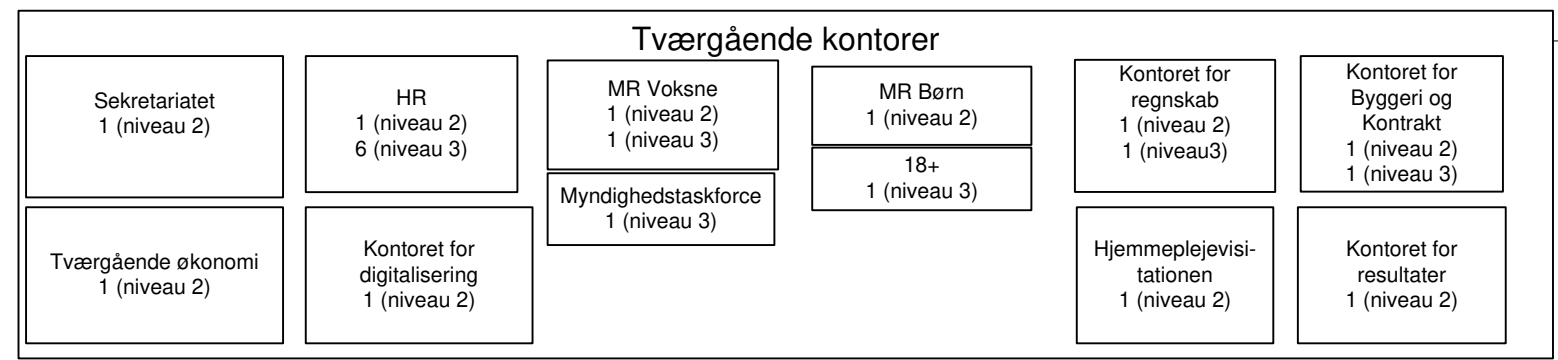


**Bemærk:** Tallene skal ses med forbehold for at datagrundlaget ikke er helt nøjagtigt, da det forudsætter at alle enheder selv registrerer deres ledere på samme måde i KKOrg. Forvaltningen er i dialog med KS om, hvordan der sikres en bedre datakvalitet fremadrettet.

**Direktion**  
3 (niveau 1)



**DU Udsatte & Psykiatri**  
1 (niveau 2)

**DU børn og familier**  
1 (niveau 2)

**DU Handicap**  
1 (niveau 2)

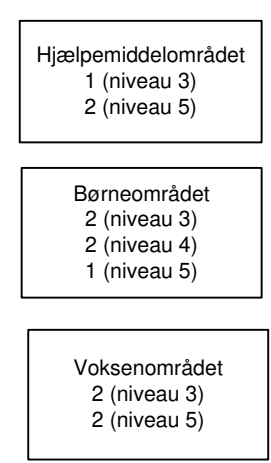
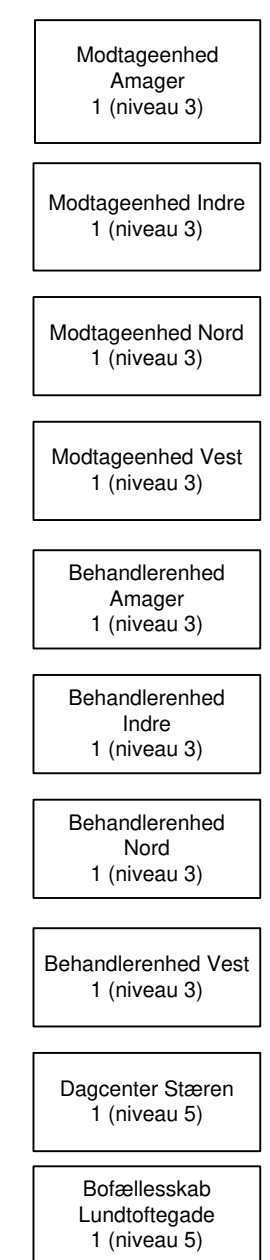
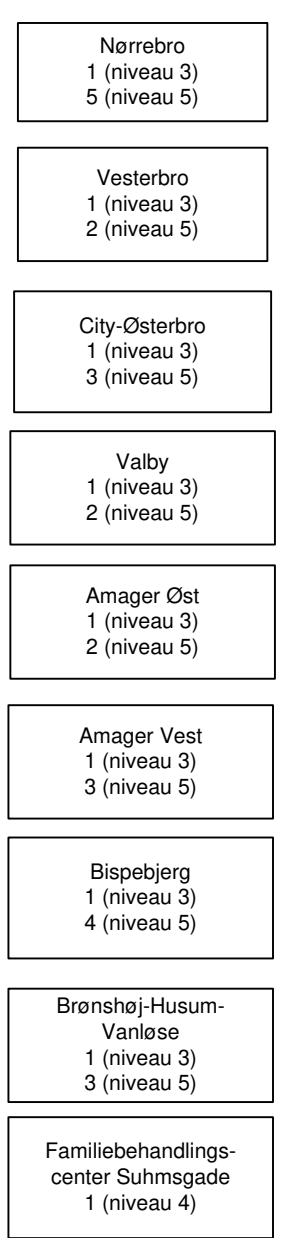
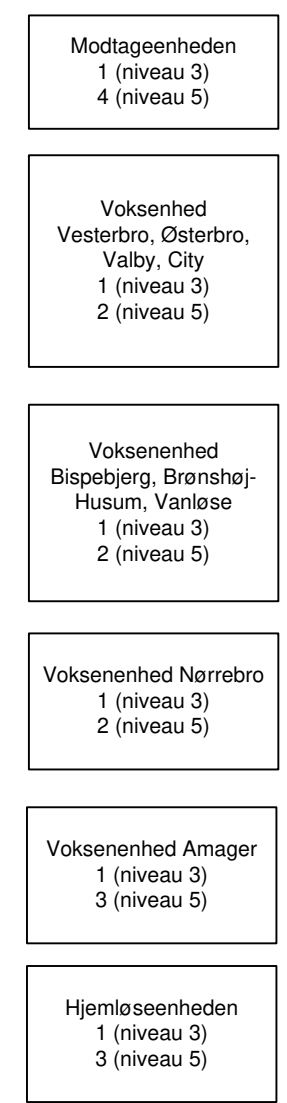
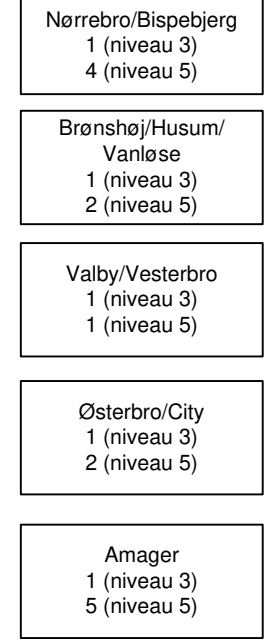
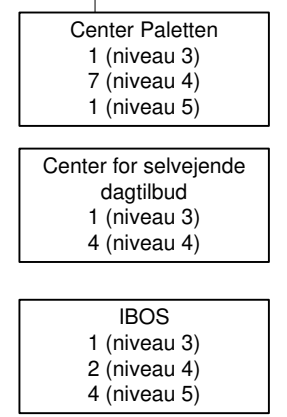
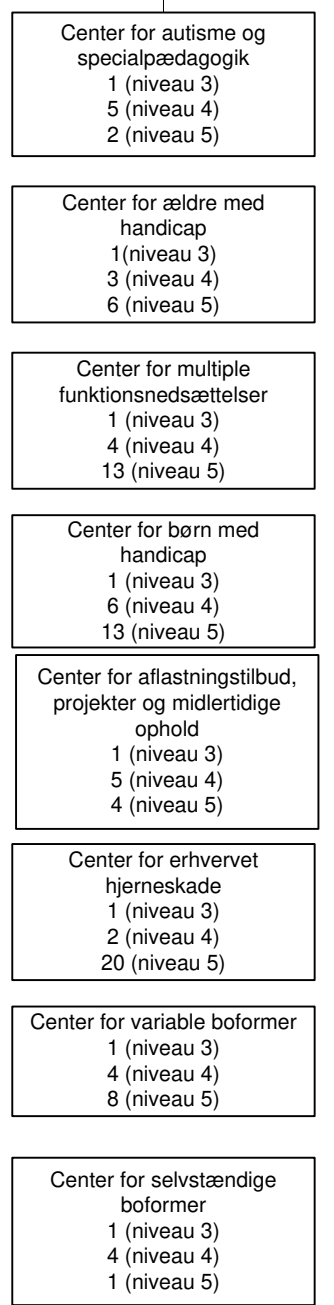
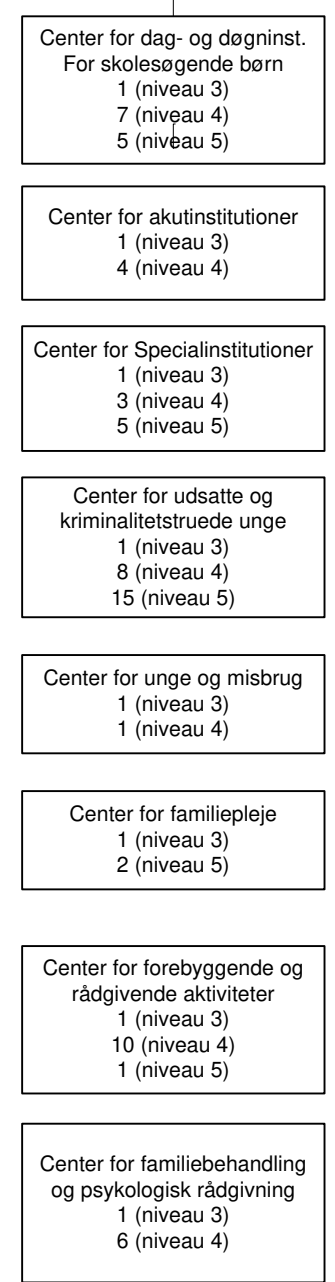
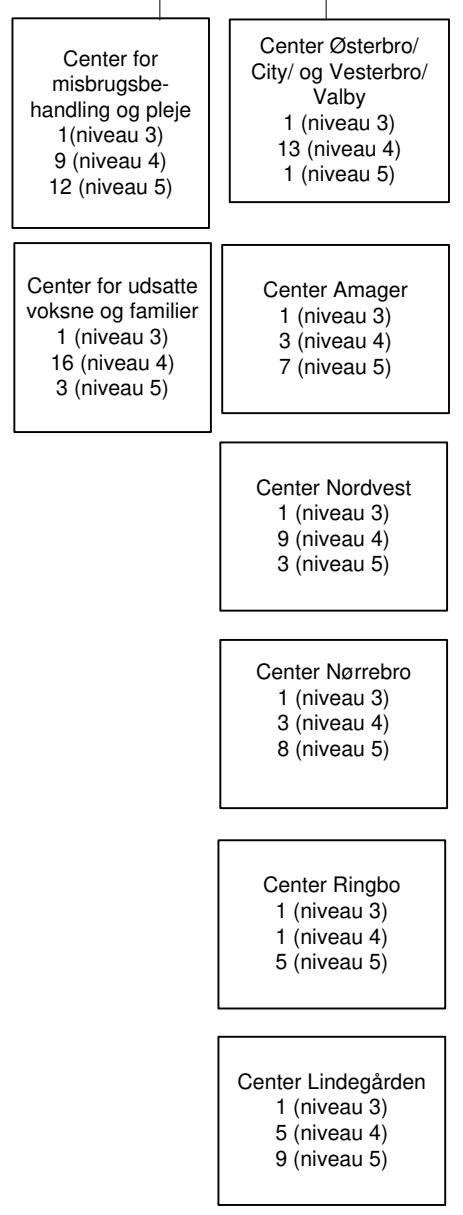
**DU Hjemmepleje**  
1 (niveau 2)

**SCK**  
1 (niveau 2)  
2 (niveau 3)

**BFCK**  
1 (niveau 2)  
2 (niveau 3)

**RCK**  
1 (niveau 2)  
2 (niveau 3)  
1 (niveau 5)

**HCK**  
1 (niveau 2)  
3 (niveau 3)



Kilde: KKOrg