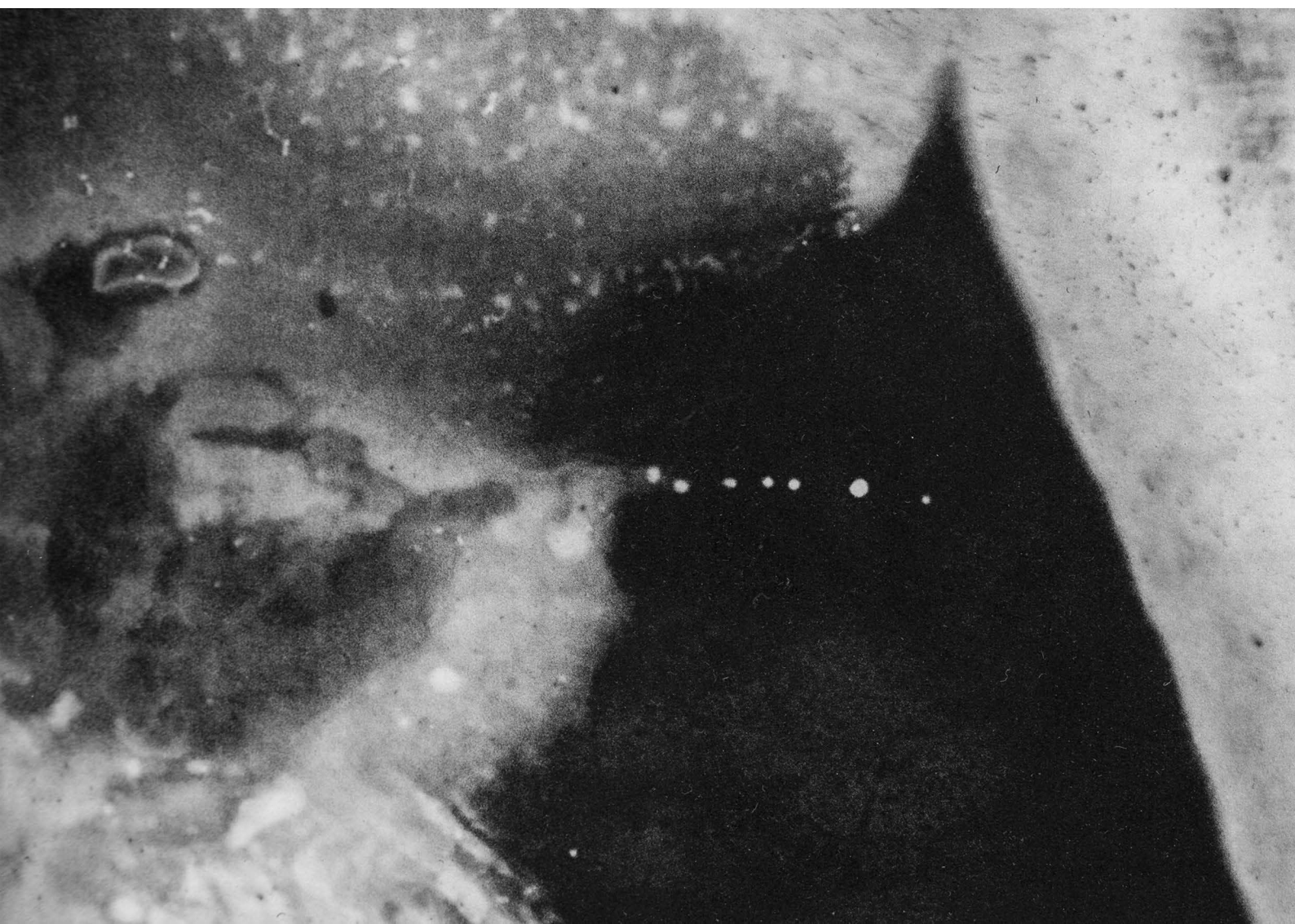
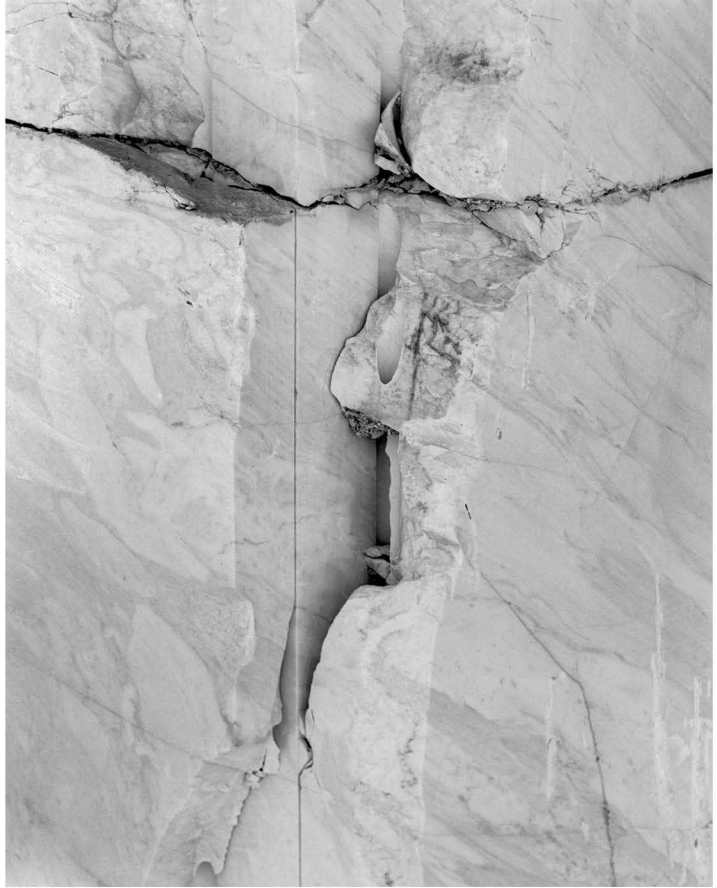
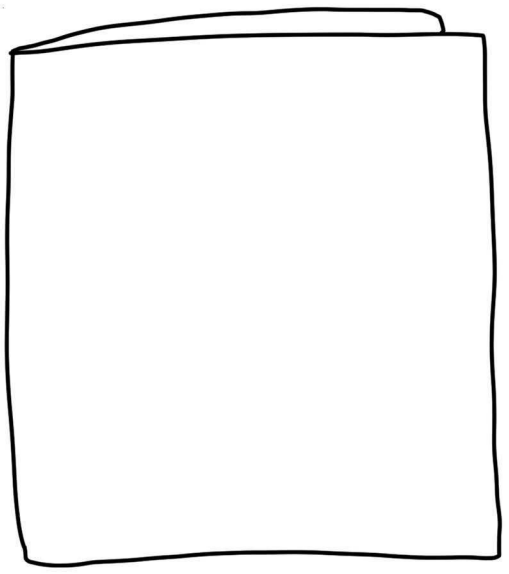
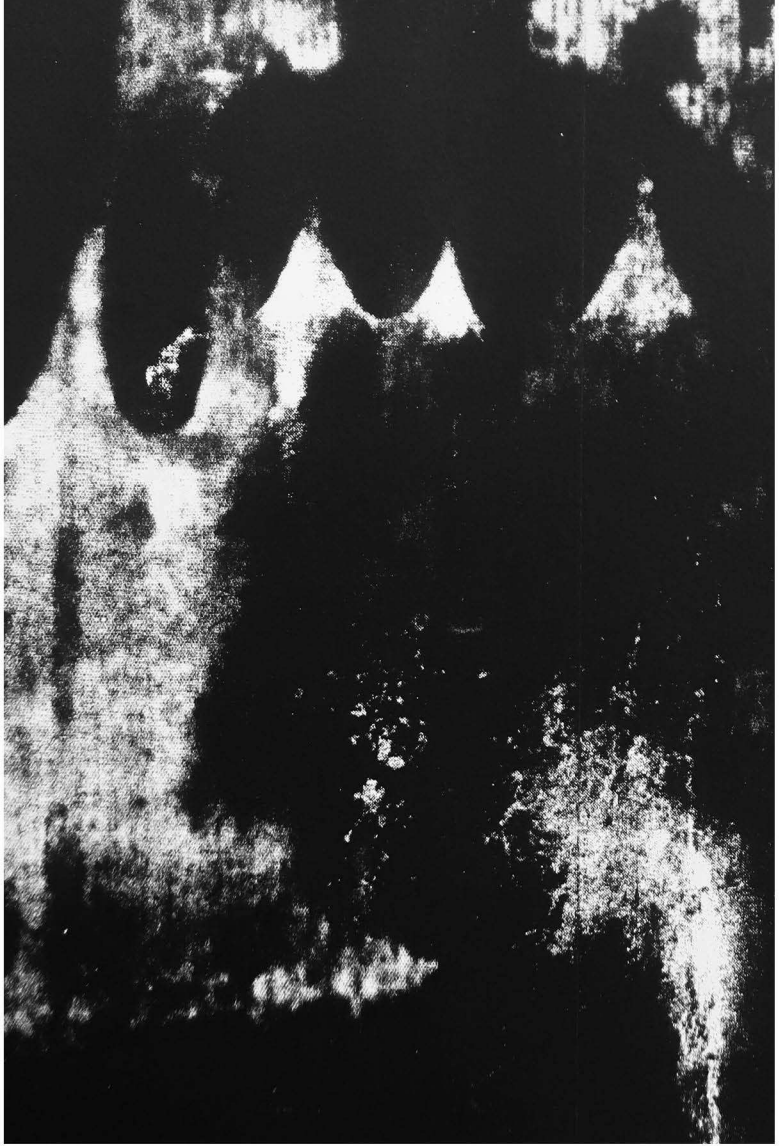
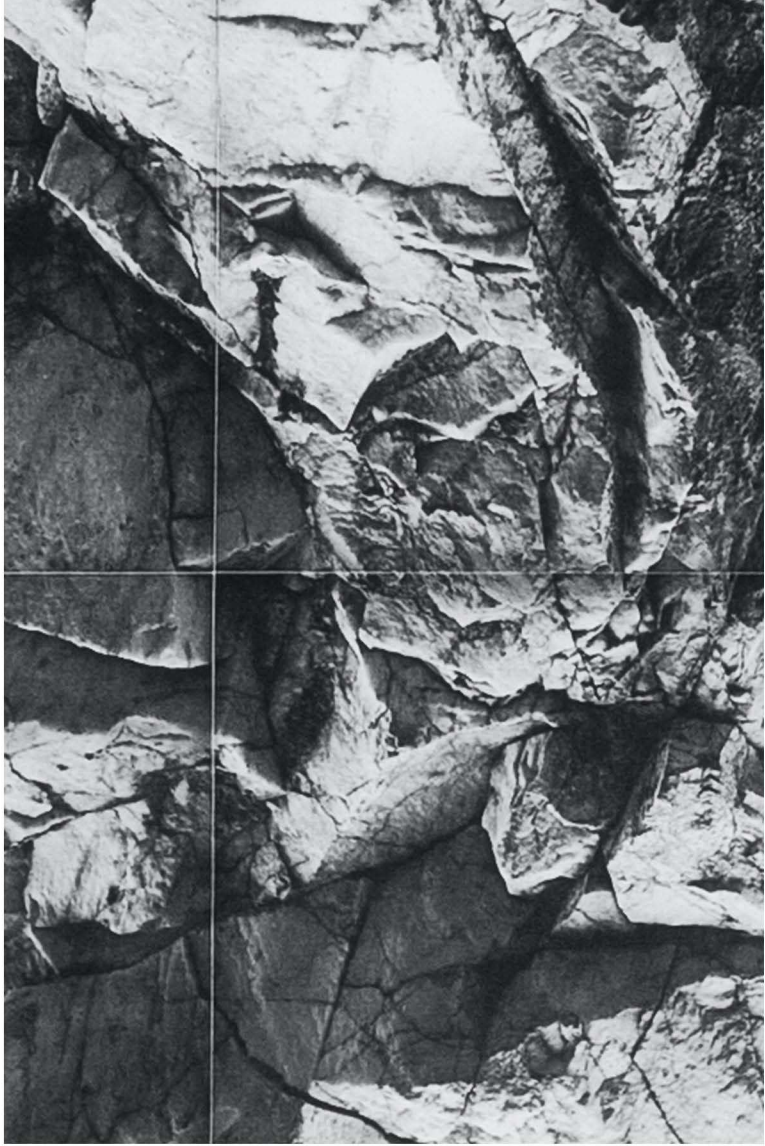


Skitse materiale til kunstnerbogen

Collager af skitse materiale og forlæg til kunstnerbogen (ikke boglayout):
heriblandt storformatsfotografi i marmorbrud, fotogravure, risografi og serigrافي.
Al billedmateriale er fra egne værker eller prøver/skitser.

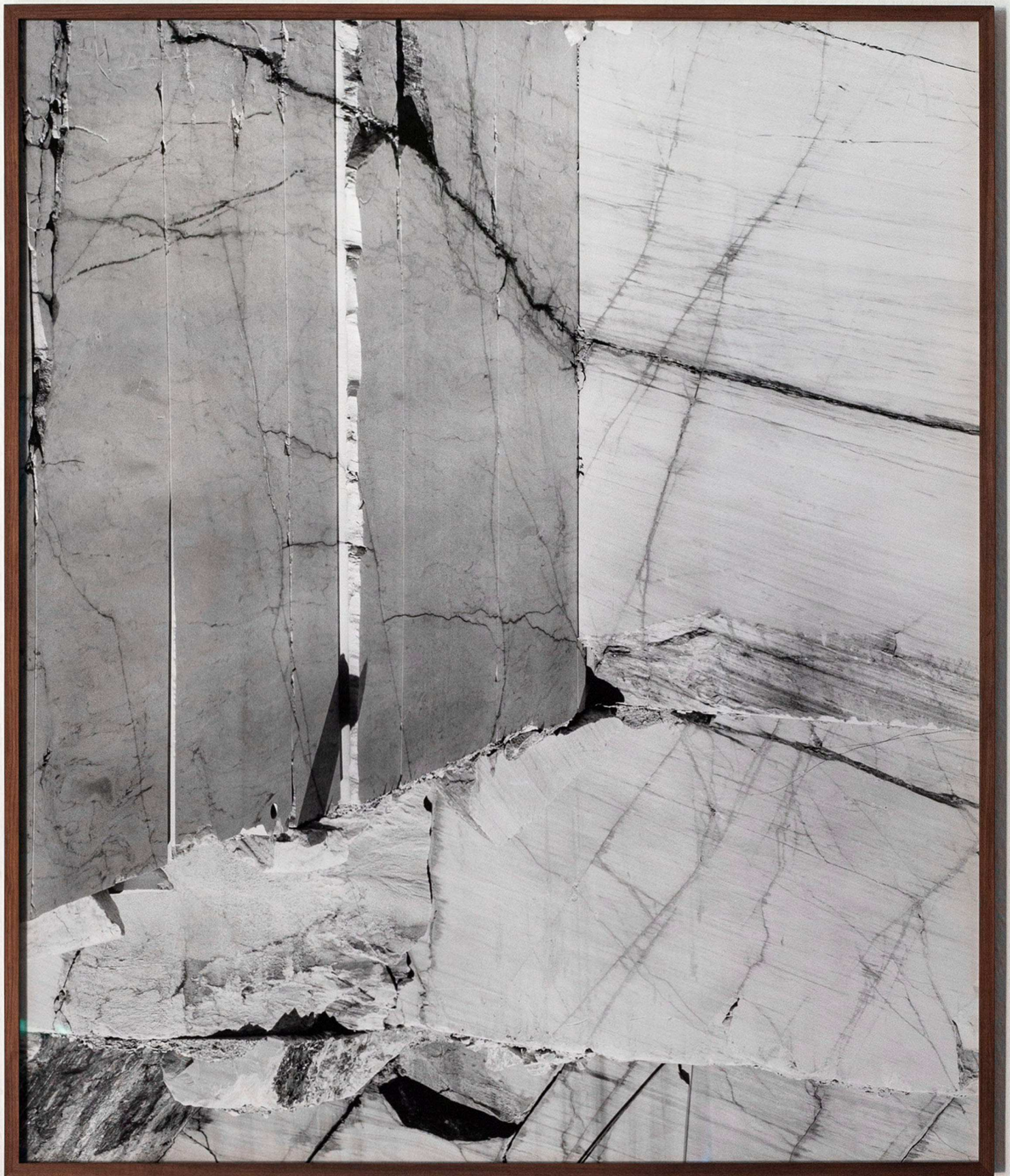
Herunder: fotogram printet på risograph - håndsyt i ryggen med sort tråd. Fotogravure som forlæg til serigrافي.



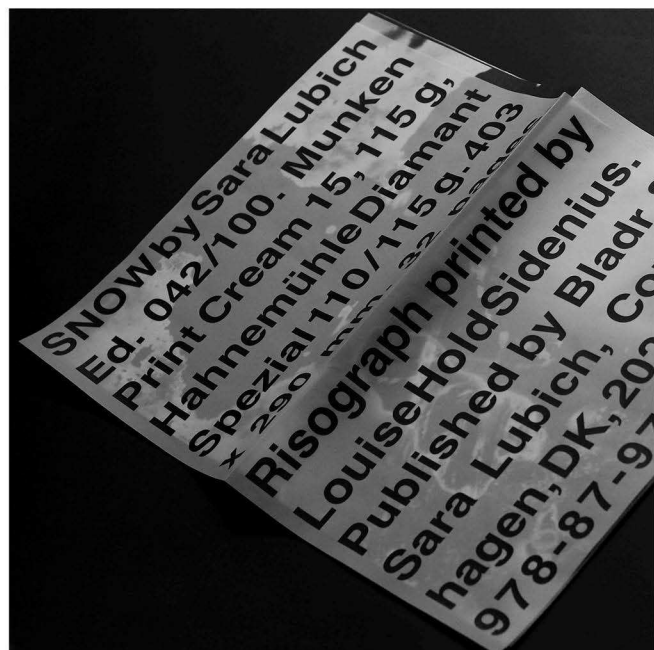
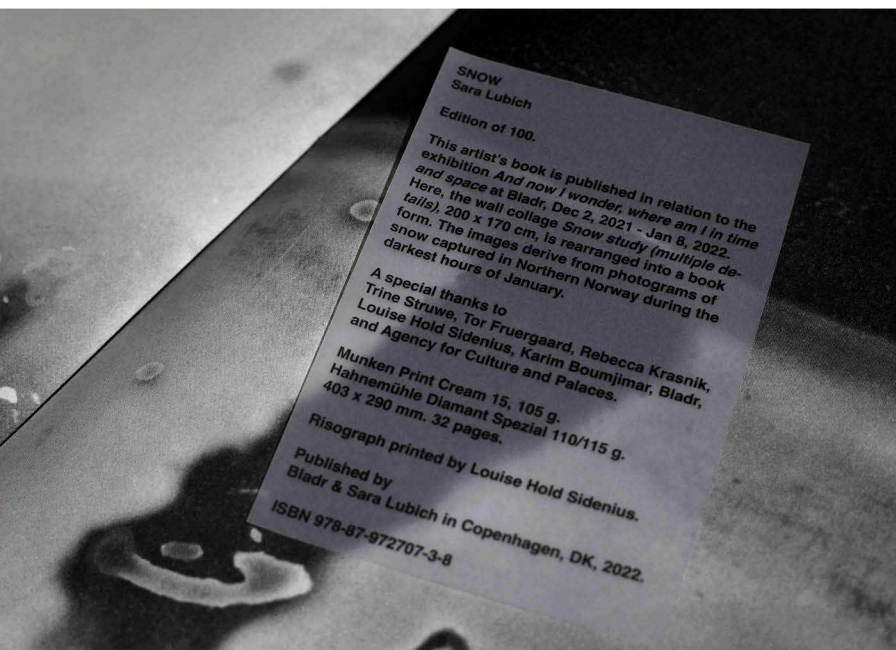
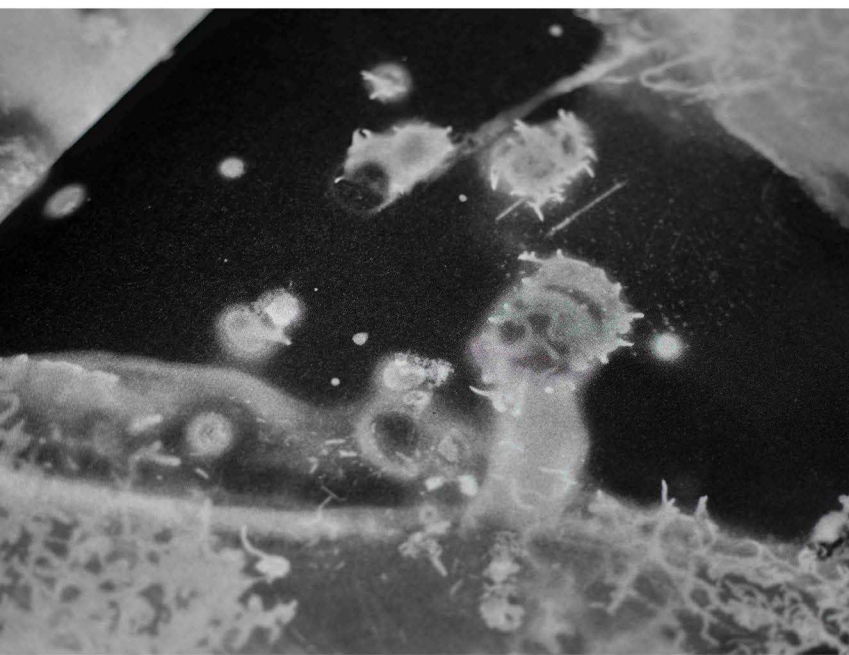
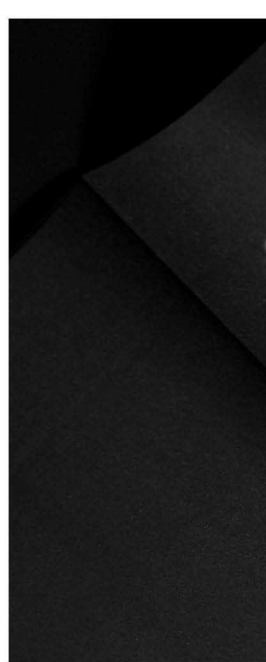
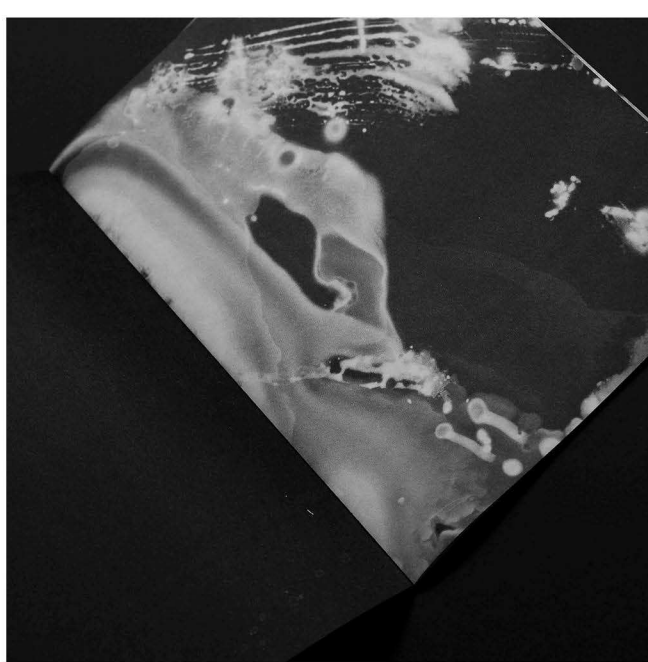
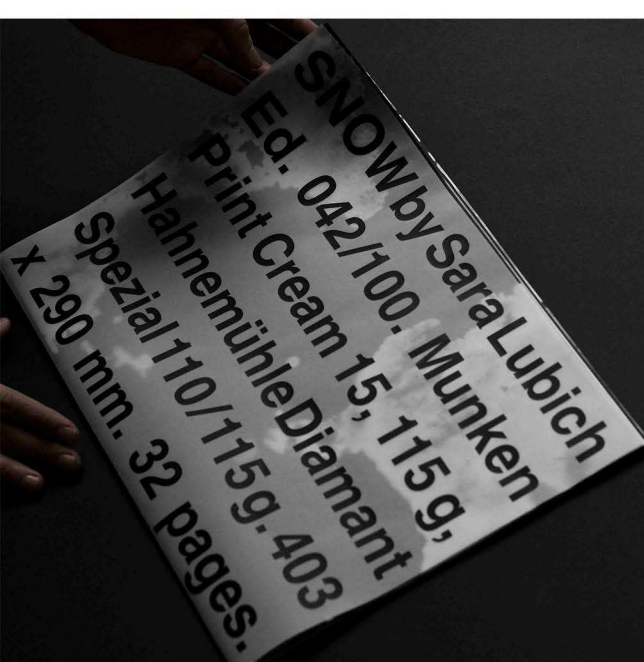


fotogravure
risoprint
fotografi





Study #1 Marble, 2021. Archival print, mansoniatræ. 101,5 x 85 cm. Installationsfoto.



Dokumentationsfotos af kunstnerbogen *Snow*, 2022. Bogen er en slags lillesøster til *Impatience for eternity*. Tryk: riso på Munken Print Cream og inkjet på Hahnemühle kalkerpapir. Håndindbundet. 32 sider, 403 x 290 mm. Edition på 100. Foto: Barbora Kováčová / Sara Lubich.