

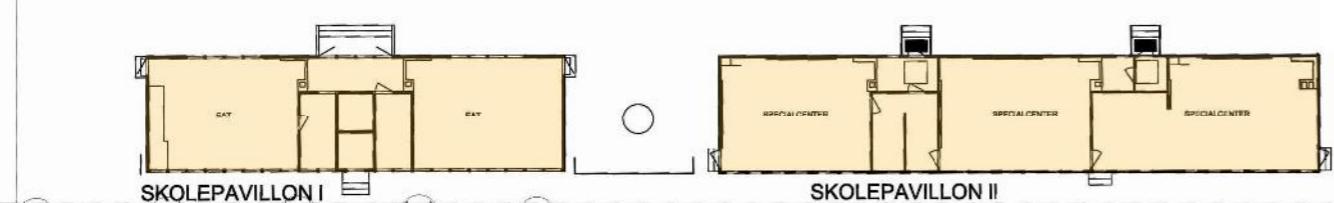
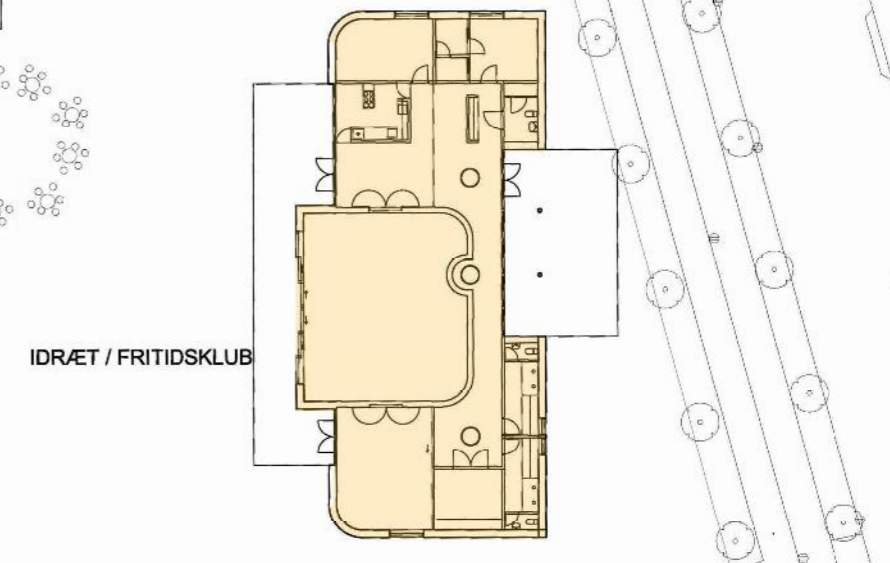
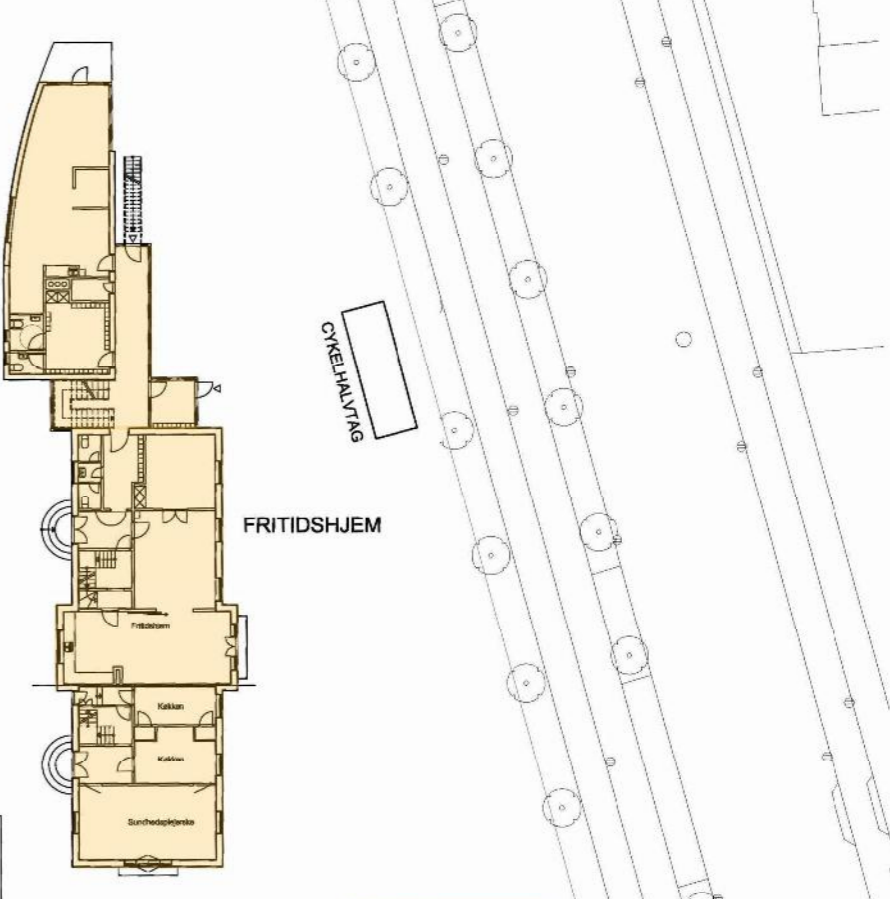
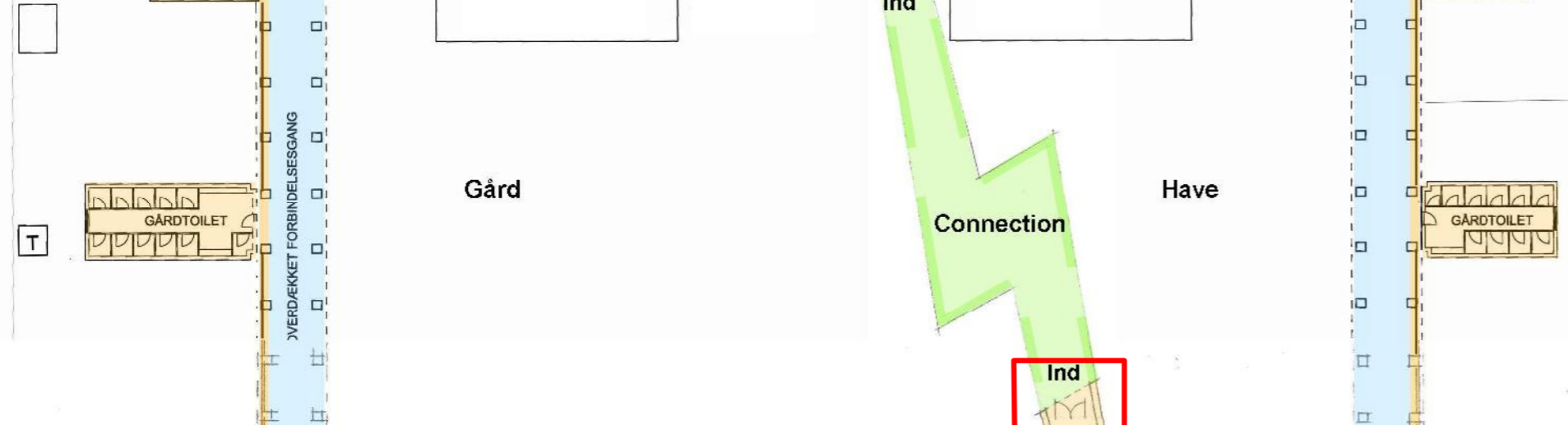
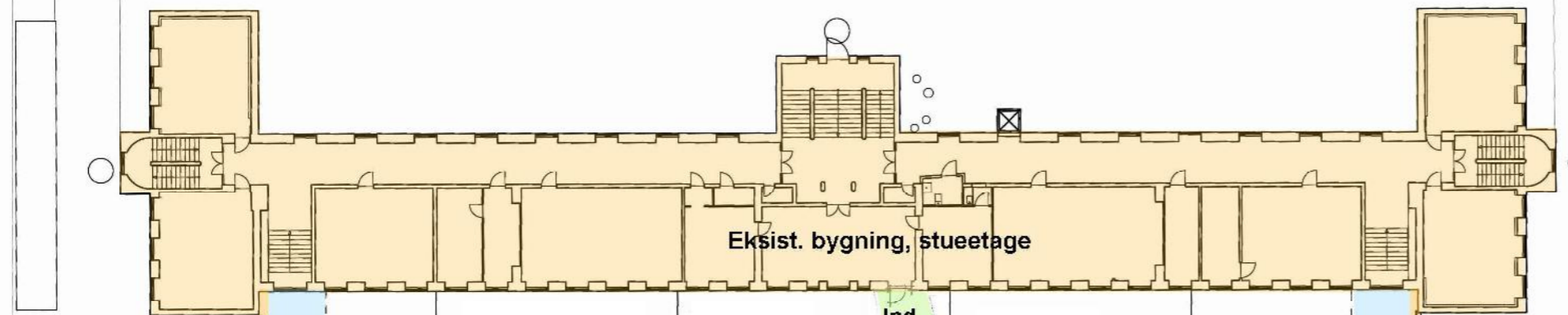
HØJDEVANGENS SKOLE

ETABLERING AF UNGDOMSMILJØ

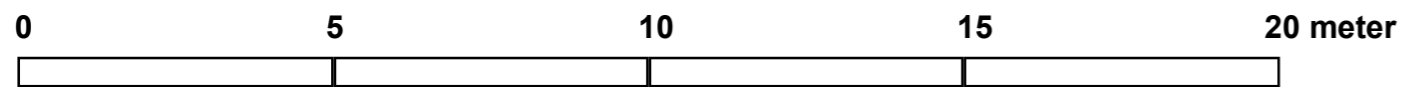
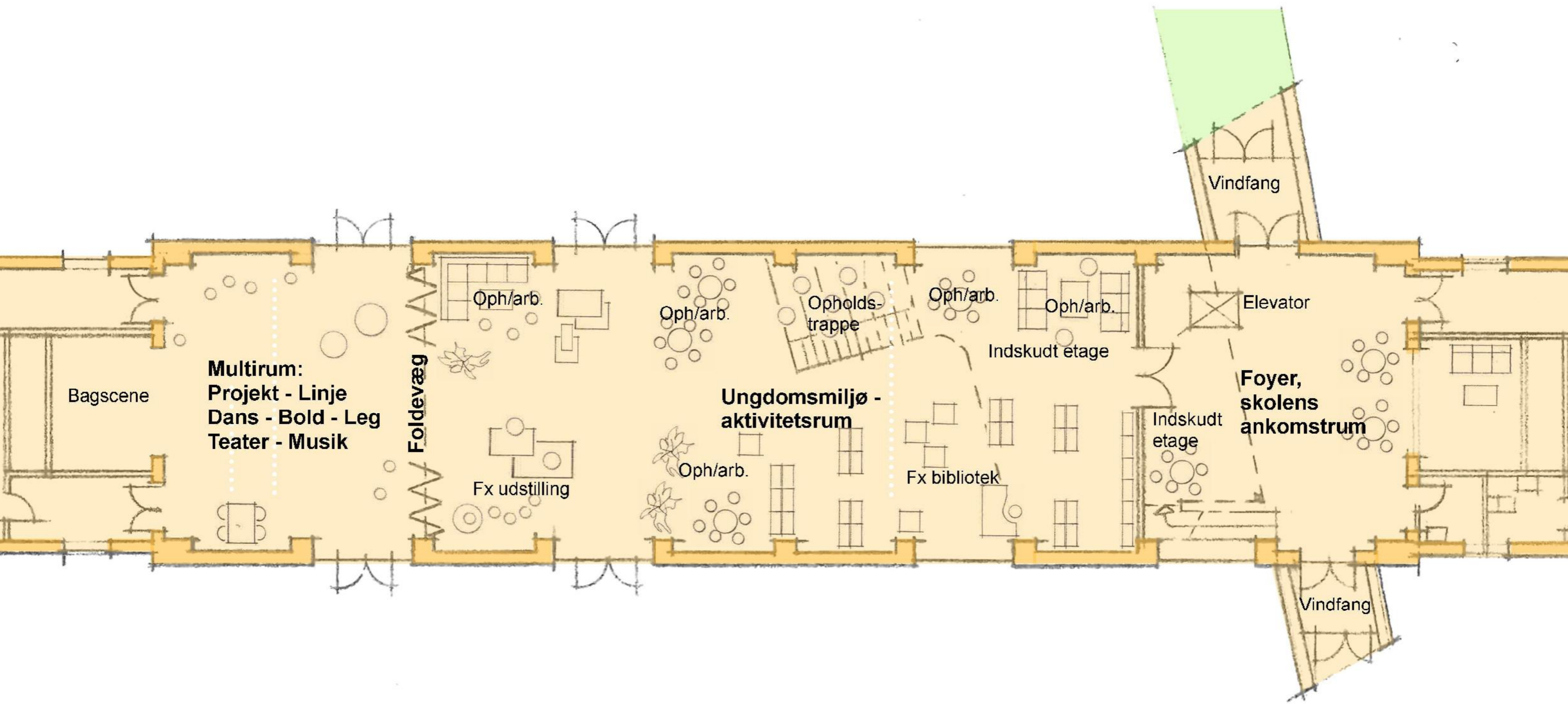
Januar 2012

KHS arkitekter as

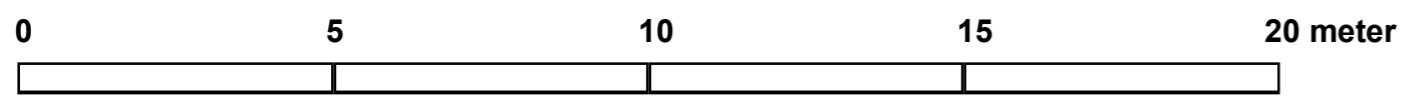
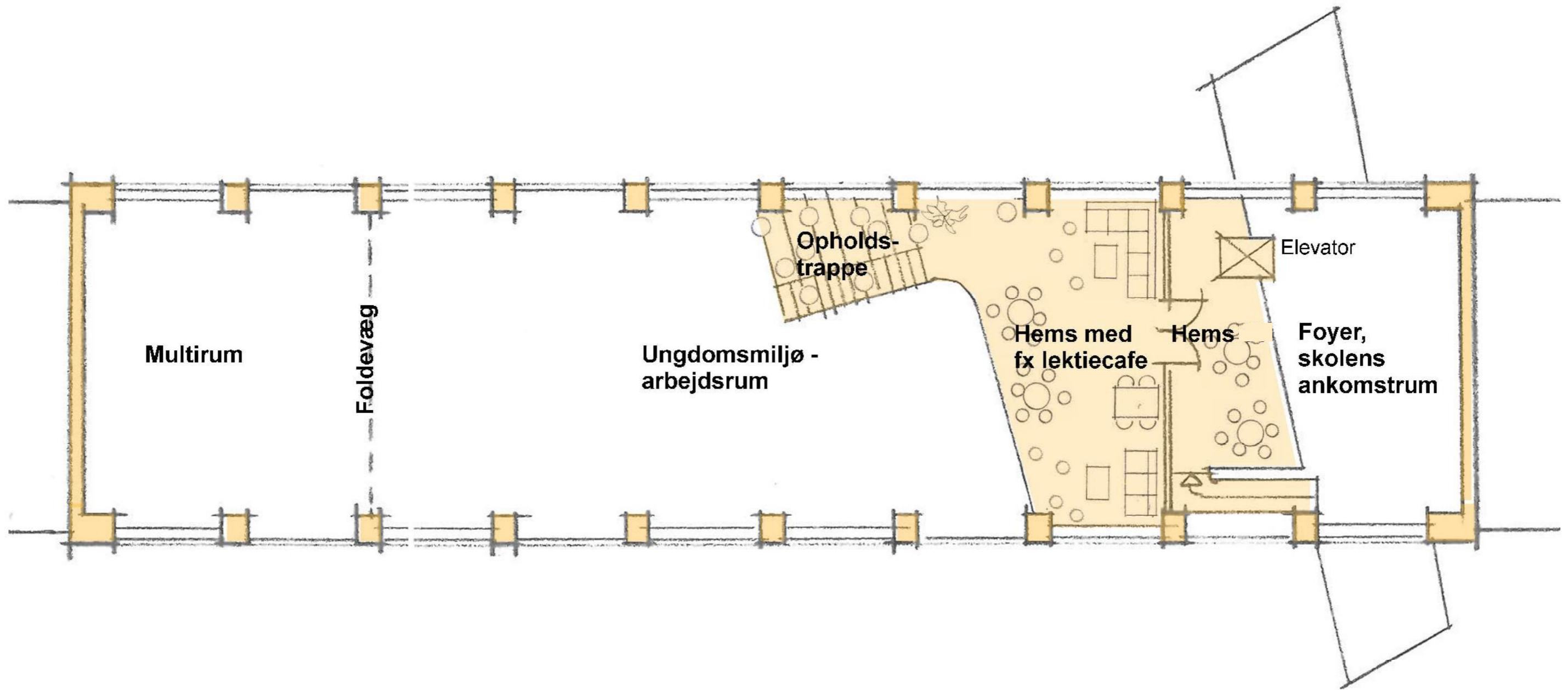




Oversigtsplan, stueetage - fremtidige forhold



Planskitse: Vindfang - Foyer - Ungdomsmiljø aktivitetsrum - Multirum



Målestok 1:60 ved udprintning på A1 (60x84 cm) uden tilpasning

Planskitse: Hemse og opholdstrappe i ungdomsmiljøet

