



MOUNT ANALOGUE

++ A Provisionally Utopian Live Performance Event ++

By Sophia Brous (after René Daumal)
and collaborating artists



SUMMARY



MOUNT ANALOGUE is a live performance work inspired by the landmark 1952 novella *Le Mont Analogue* by French author Rene Daumal.

Part-performance workshop, theatrical reading, musical concert, sound and film installation, the work is an examination into the actualisation of myth into reality. It follows a great quest towards a sacred mountain, believed to be so high that it is the pathway to utopian revelation.

Written and adapted for the stage by Australian interdisciplinary artist, musician and performer Sophia Brous, the work brings together an ensemble of international collaborating artists across sound, theatre, film, music, visual art and design in a theatrical experiment to bring the path to Mount Analogue into being.

"The gateway to the invisible must be visible." – Mount Analogue

THE PERFORMANCE

Mount Analogue is set in an empty blackbox, warehouse or opera stage that gradually transforms within a shifting landscape of props, sound foley, projection screens, kinetic instruments and large-scale scenic design.

Staged as an experimental performance workshop of text, music and moving image, the piece calls on each performance to manifest a new path towards the mountain.

Following a script drawn from the text, mountainside songs, mystical objects and vivid imagery of René Daumal's landmark novel, the work radically reimagines *Mount Analogue* as a final destination where exploration, exhaustion, and ecstasy conspire with the audience's imagination to realise an ever-transforming path towards an imaginary mountain.

An extended, immersive performance event incorporating theatre, expanded cinema, music and interactive, participatory storytelling





THE PRODUCTION

Mount Analogue is commissioned by Ultima Festival Norway and the Norwegian Arts Council, and has been created with the support of Komische Oper Berlin, The Watermill Center, Australia Council of the Arts and City of Melbourne. It was developed in several stages at The Watermill Center and Komisches Oper Berlin, and will be premiered at the Oslo Opera House for the Ultima Festival in September 2022, with further European, North American and Australian touring to-follow.

The 'provisionally epic utopian live performance event' is the final stage of a multi-artform long-term collaboration between Australian artist, musician and director Sophia Brous, US film maker Ben Russell and French sound artist Nicolas Becker. The collaboration commenced in 2018 in a series of voyages across Europe between the Arctic Circle and the Aegean Peninsula to trace out a route towards a mountain, and has culminated in the realization of a series of cross-artform major works, including the feature film *The Invisible Mountain* (Ben Russell 2021), sound installation *La Montaña Invisible* (MUCA ANAM Mexico, 2019); exhibition *Le Montagne Invisible* (Le Plateau, Paris 2020) and Brous' live performance premiere, September 2022.

"And so I can admit to it now, in spite of everything, that some part of me deep down firmly believed in the material existence of Mount Analogue"



TIMELINE

July - August 2022

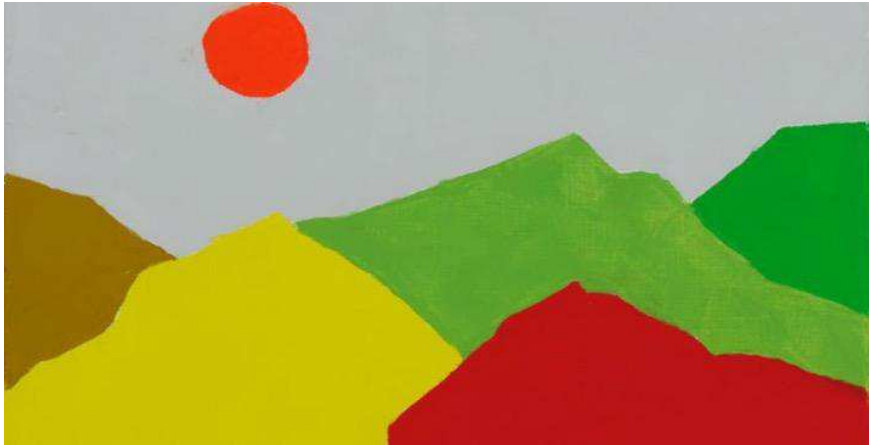
Full Ensemble creative workshops
and rehearsal - Komische Oper Berlin

September 2022

World premiere: Oslo Opera House,
Ultima Festival, Norway

2023 - 2024

North American, European and
Australasian tour dates.



TEAM



Sophia Brous (AUS)

Director, Writer, Performer

Sophia Brous is an interdisciplinary artist, musician and performance-maker based in New York and Melbourne. She creates new contemporary performance works working with festivals, concert houses and cultural events internationally.

Brous is resident artist at the Brooklyn Academy of Music (BAM) and former artist-in-resident of National Sawdust New York, The Watermill Center and the Red Bull Studios New York. She is ongoing Artistic Associate of the Arts Centre Melbourne, where she created *Supersense: Festival of the Ecstatic* in 2015. Brous was finalist of the 2019 Melbourne Prize for Music and recipient of the World Tour Scholarship from the Berklee School of Music. Brous has collaborated with artists including David Byrne, Marc Ribot, Questlove, Marina Abramovic, Faye Driscoll, Julia Holter & Tyondai Braxton.

Nicolas Becker (FRA)

Sound Designer, Performer, Sound Foley artist

Nicolas Becker is an Academy Award-winning sound foley artist, sound designer and composer working at the intersection of film, music and visual art installation. He has collaborated with filmmakers Roman Polanski, David Cronenberg, Matthieu Kassovitz, Andrea Arnold and Danny Boyle. Recent films include Oscar-winner *Sound of Metal*, 2016 Cannes Jury Prize winner *American Honey*, Denis Villeneuve's *Arrival*, and multi-Golden Reel award-winner for Alfonso Cuarón's hugely successful *Gravity*.



Becker is also a research and development consultant for many studios and projects, including sound artistic director for the DAU project (Russia); sound supervisor and Musical director for Philippe Parreno

TEAM



Tony Buck (AUS/DER)
Drummer/Percussionist, Composer,
Instrument-Builder

Tony Buck is regarded as one of Australia's most creative and respected musical exports. As a drummer, percussionist, improviser, guitarist, video maker and producer, he is best known as a member of transcendent Australian trio "The Necks", and has toured or recorded with them for over three decades, alongside collaborations with diverse artists spanning Brian Eno, Lee

Ronaldo, Jon Rose, Otomo Yoshihide, John Zorn, Keiji Haino, Evan Parker, The EX and many more.

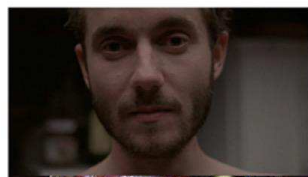
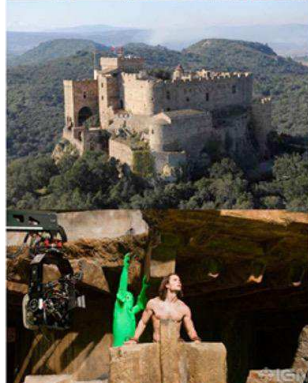
Following studies in Australia he spent time in Japan, where he formed "Peril" with Otomo Yoshihide and Kato Hideki before relocating to Europe in the mid-nineties. He has performed at many of the world's leading concert halls and festivals, and created live kinetic sound installation and video works shown in Tokyo, Belfast, Berlin, New York and Sydney.

Ben Russell (USA)
Film artist, Performer



Ben Russell (b.1976, USA) is an artist and filmmaker whose work lies at the intersection of ethnography and psychedelia. His films and installations are in direct conversation with the history of the documentary image, providing a time-based inquiry into trance phenomena and evoking the research of Jean Rouch, Maya Deren and Michael Snow, among others. Russell received a 2008 Guggenheim

Fellowship, a FIPRESCI International Critics Prize (IFFR 2009) for his first feature film *Let Each One Go Where He May*, and was an exhibiting artist in documenta 14 and 18. His second feature film, *A Spell to Ward Off the Darkness* (co-directed with Ben Rivers), premiered at the Locarno International Film Festival in 2013. Curatorial projects include *Magic Lantern* (Providence, USA, 2005-2007), BEN RUSSELL (Chicago, USA, 2009-2011), and *Hallucinations* (Athens, Greece, 2017). He currently resides in Marseilles, France.





MOUNT ANALOGUE

++ A Provisionally Utopian Live Performance Event ++

Sophia Brous 2022