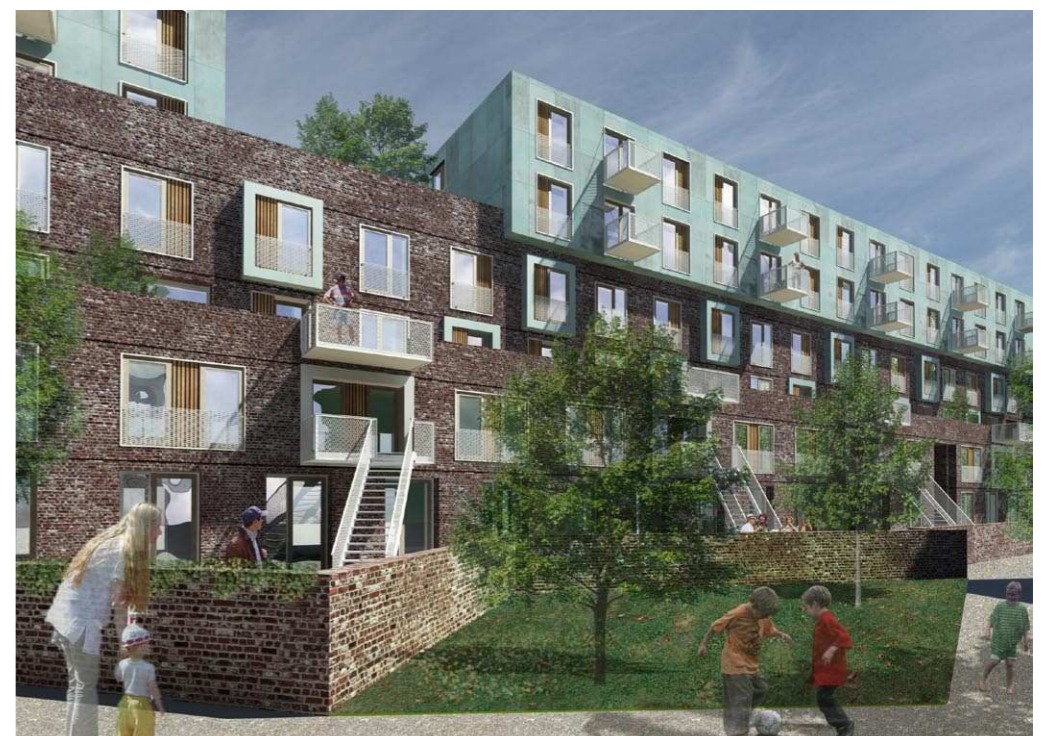


byhusene, carl jacobsens vej - Disponeringsoplæg 2011.02.11

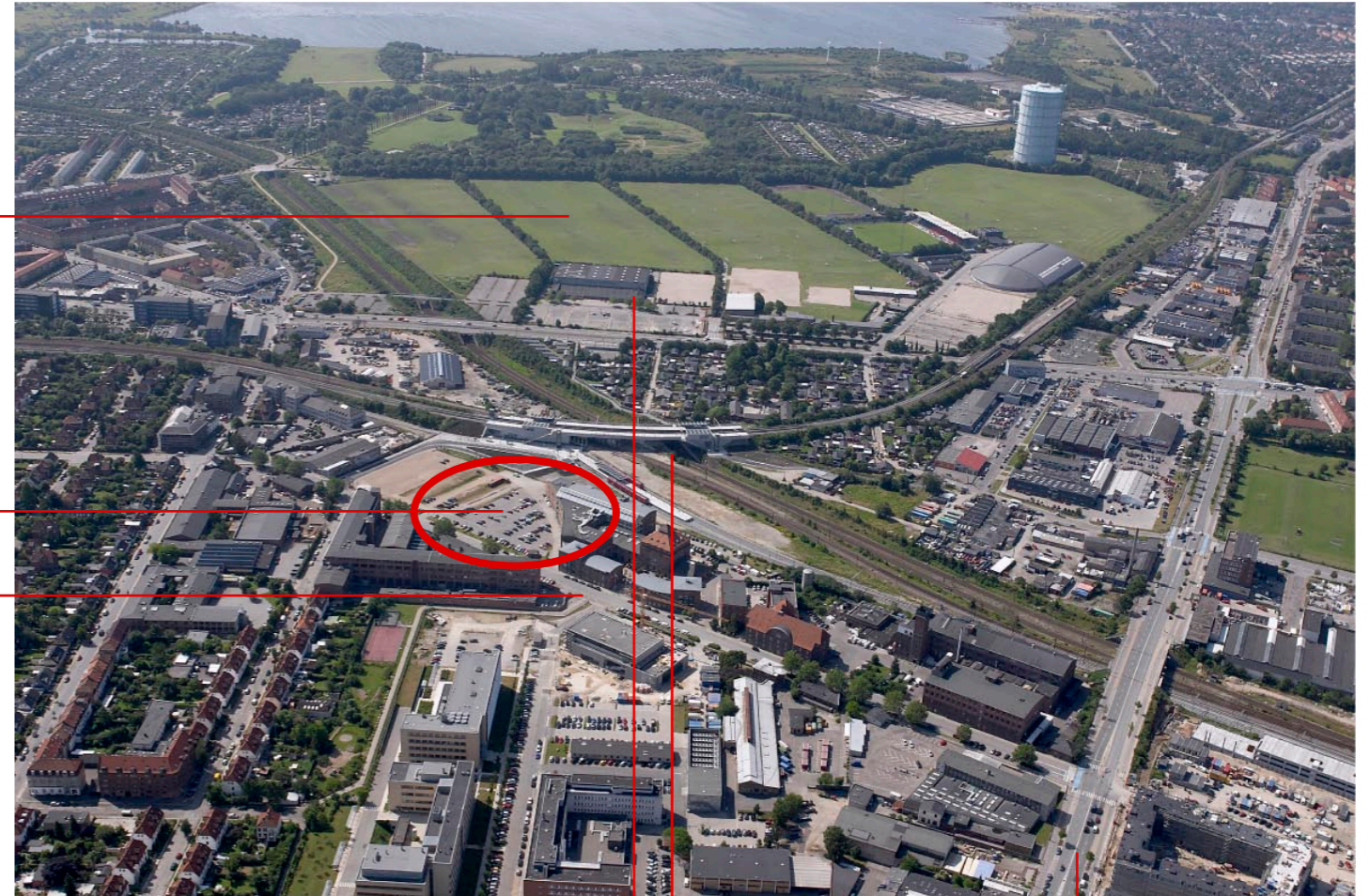


Lokalisering af projekt: Valby, Ny Ellebjerg

Valby Parken

Projekt

Carl
Jacobsens Vej



Valby Hallen

Ny Ellebjerg Station

Gl. Køge Landevej

Det nye byområde
Omdannelse af ældre industri (kollage)

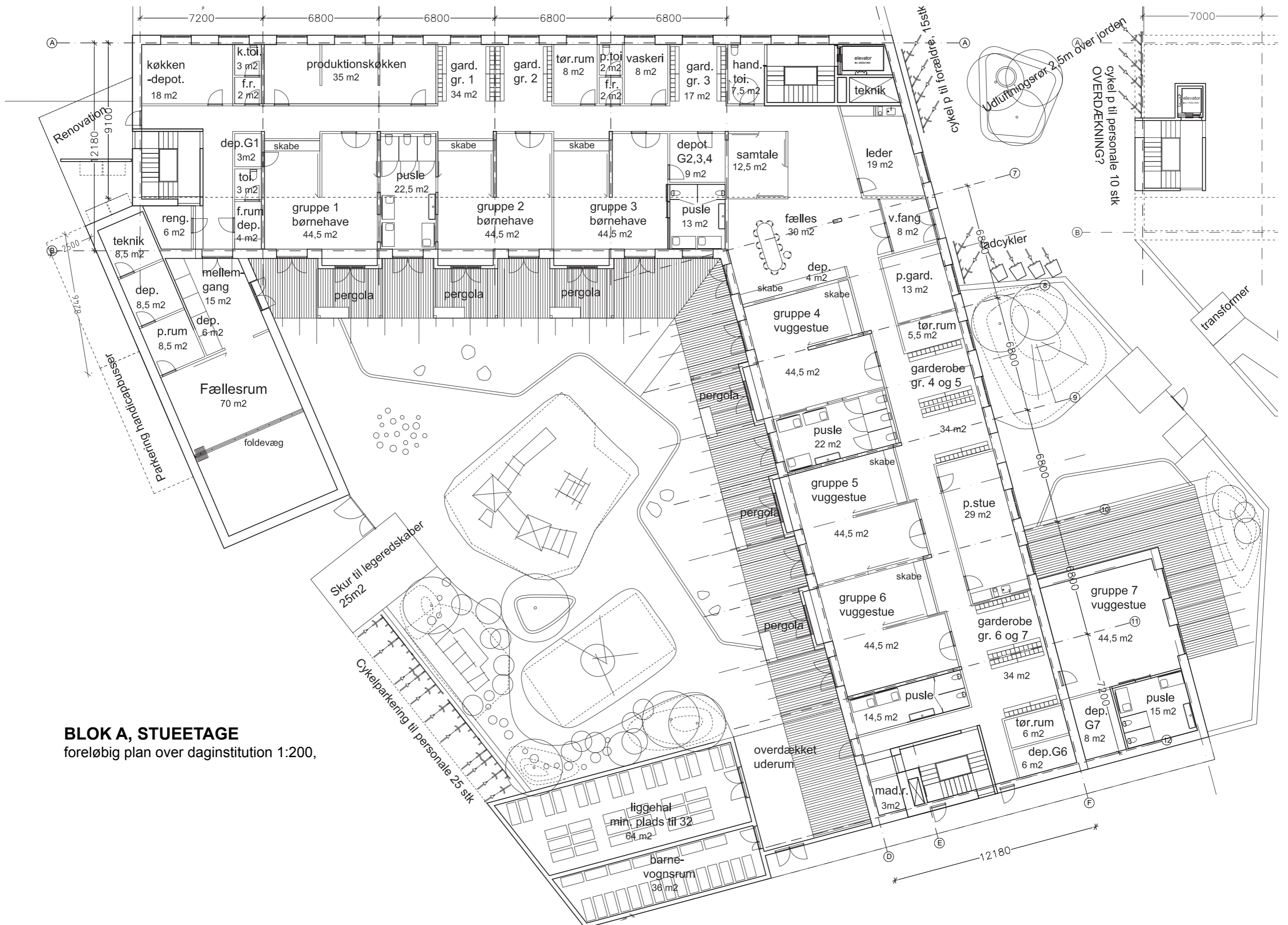


Kollager fra Lokalplan for Ny Ellebjerg', 'Den røde by' - Carl Jacobsens Vej v. Tegnestuen Vandkunsten og SLA landskabsarkitekter





foreløbig haveplan daginstitution 1:200



BLOK A, STUEETAGE
foreløbig plan over daginstitution 1:200,

BLOK A, 1. SAL



foreløbig plan over botilbud, 1. sal, 1:200,

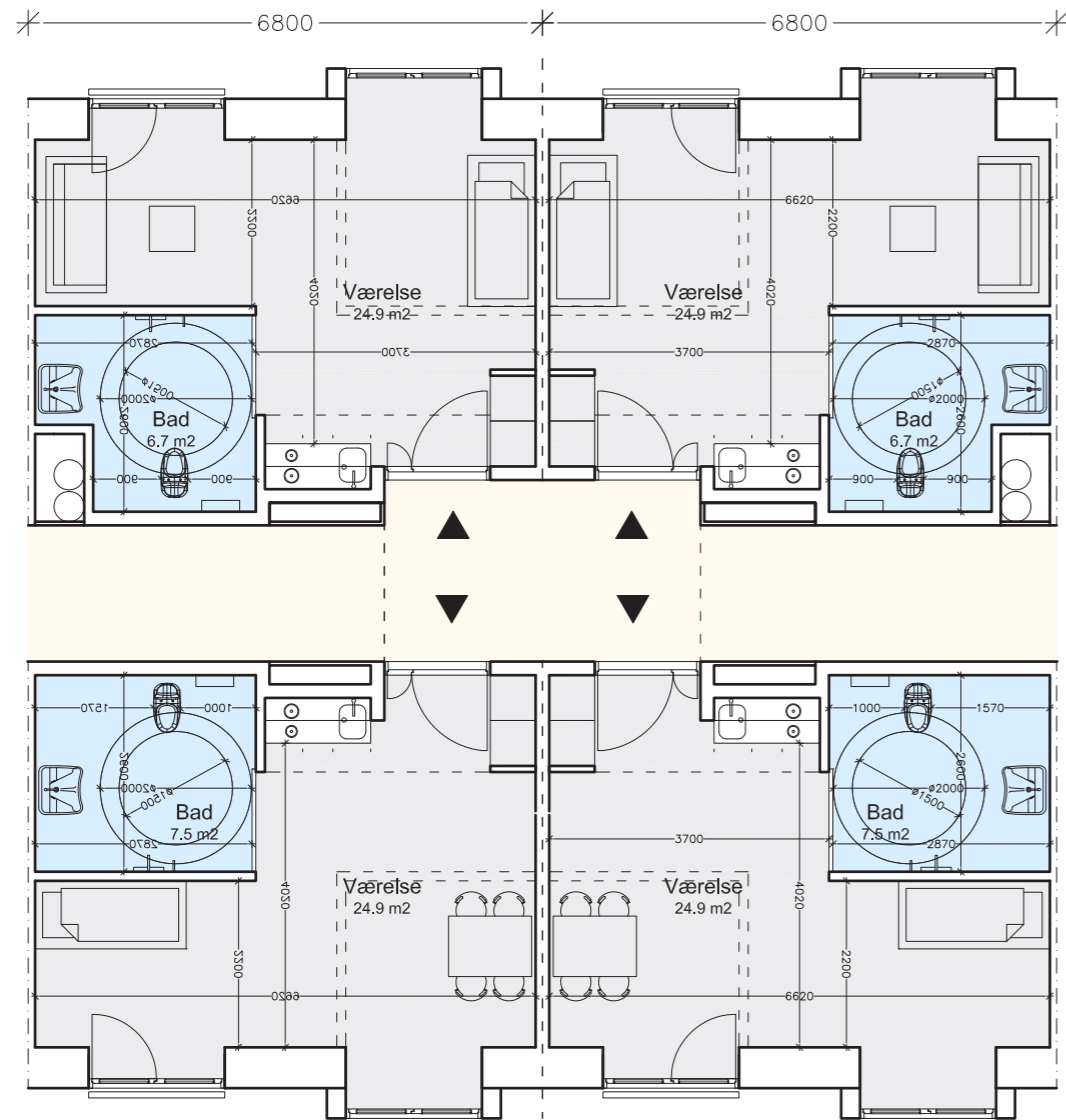
BLOK A, 2. SAL



foreløbig plan over botilbud, 2. sal, 1:200,

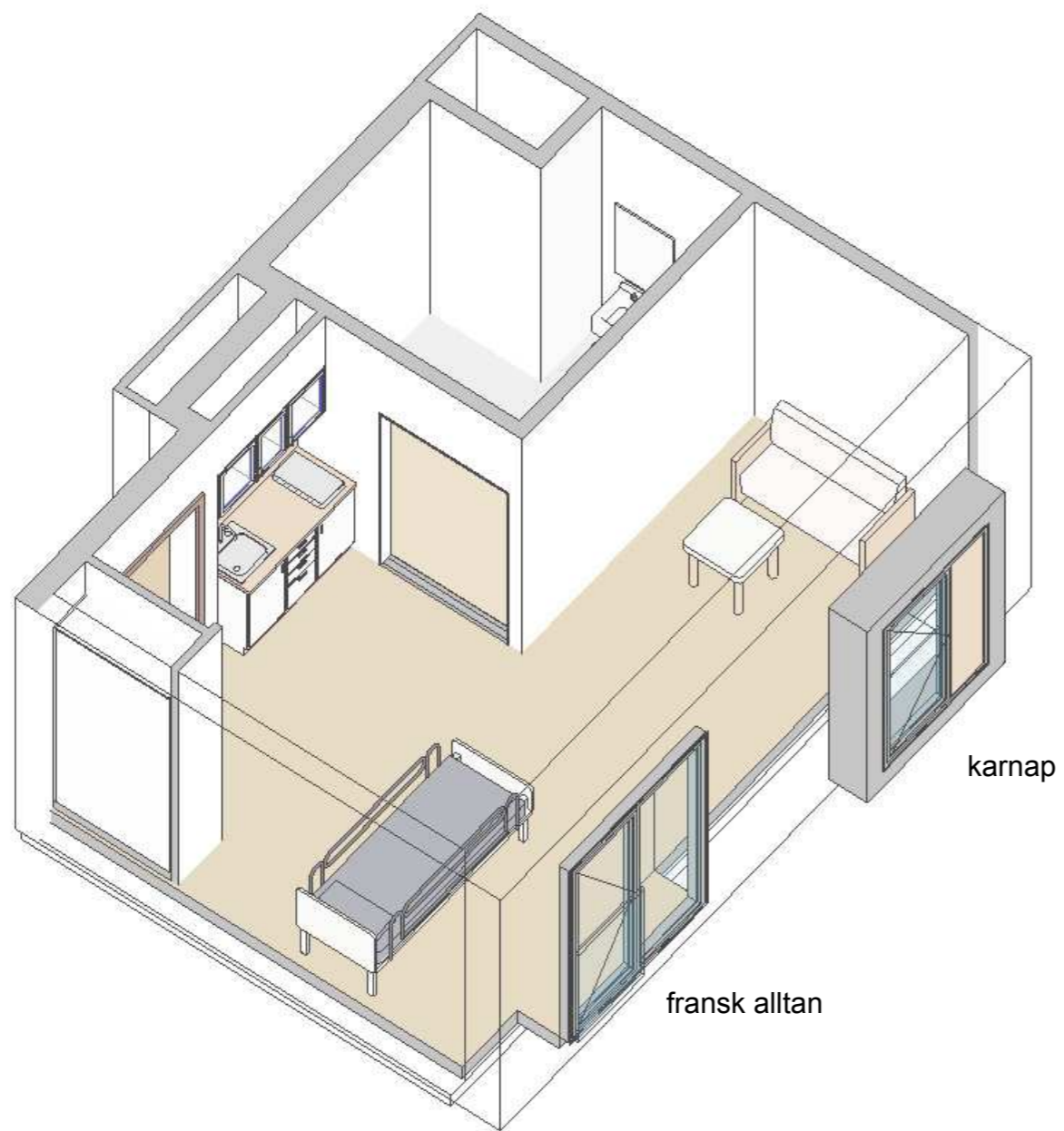
SIGNATURFORKLARING:

- Boliger
- Fællesrum
- Personale
- Div. servicefaciliteter



Type B (botilbud)
 Etage 1
 Bolig ca 37 m²
 1:100

perspektiv af lejlighed

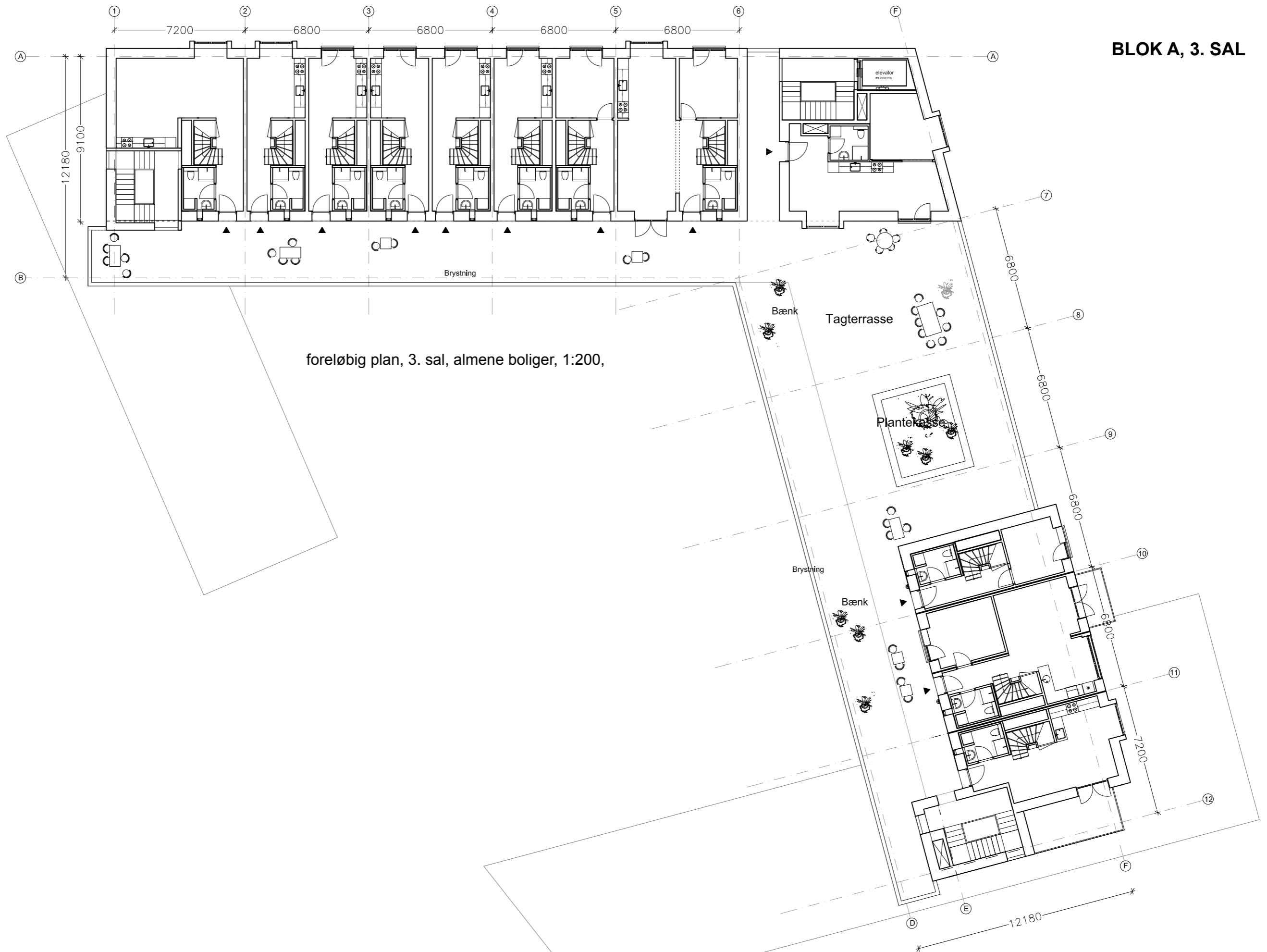


rejst plan over lejlighed i botilbud



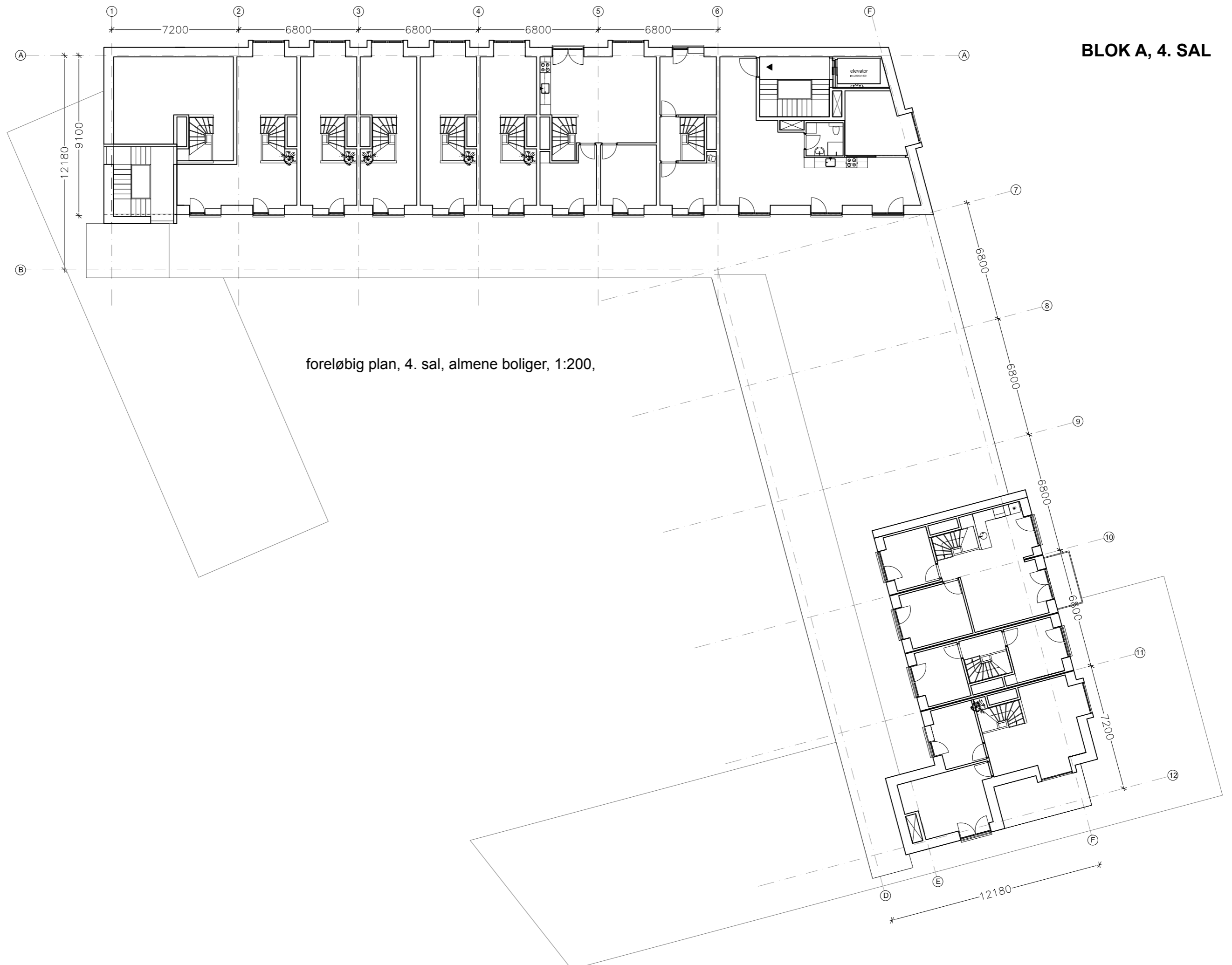
rejst plan over lejlighed i botilbud
møblering med seng i niche

BLOK A, 3. SAL



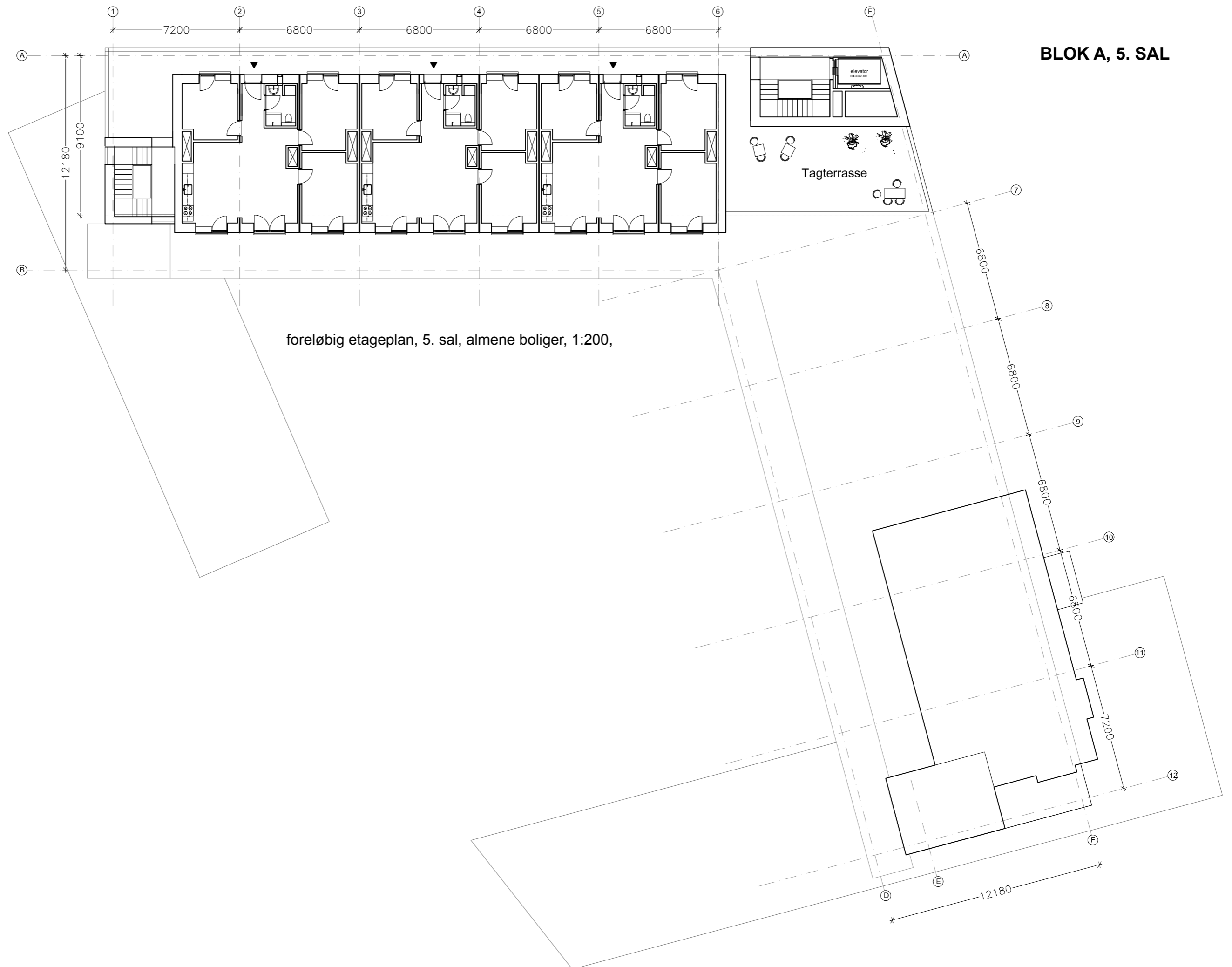
foreløbig plan, 3. sal, almene boliger, 1:200,

BLOK A, 4. SAL



foreløbig plan, 4. sal, almene boliger, 1:200,

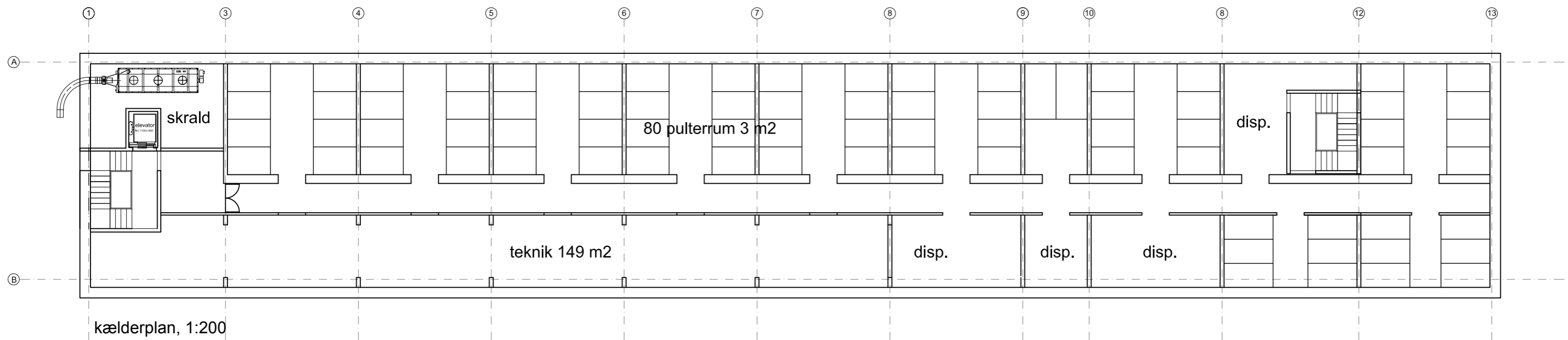
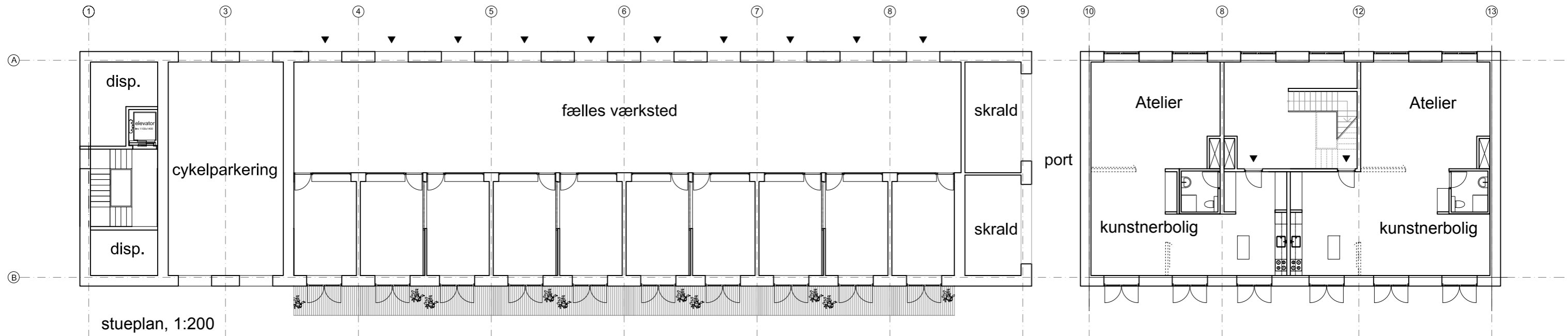




BLOK A, 5. SAL

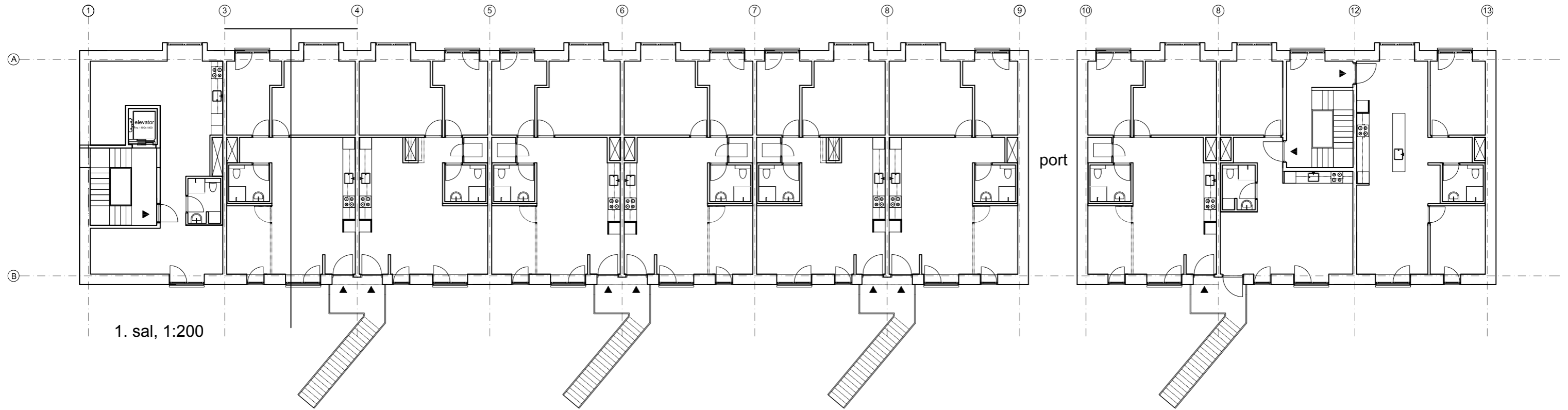
foreløbig etageplan, 5. sal, almene boliger, 1:200,

BLOK B, STUEETAGE OG KÆLDER



foreløbige etageplaner

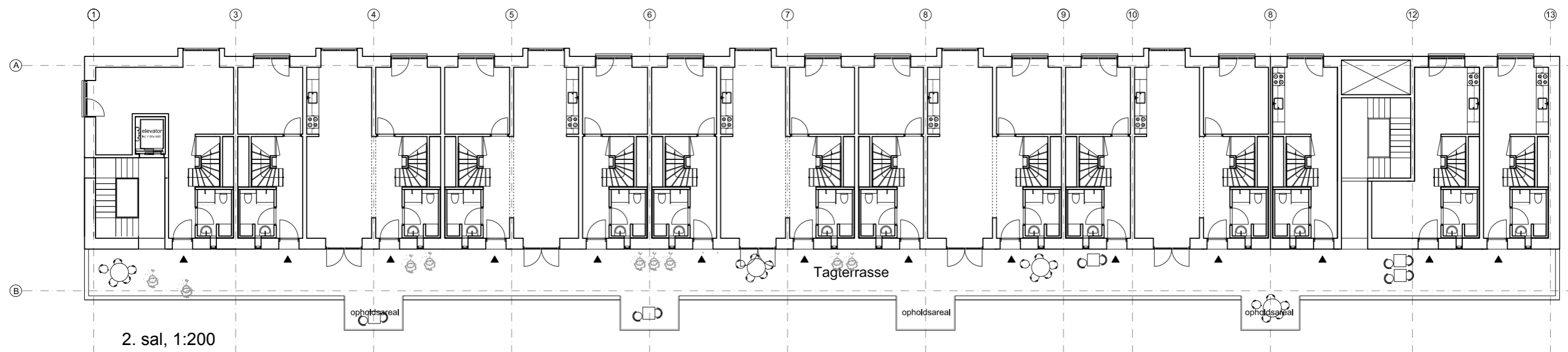
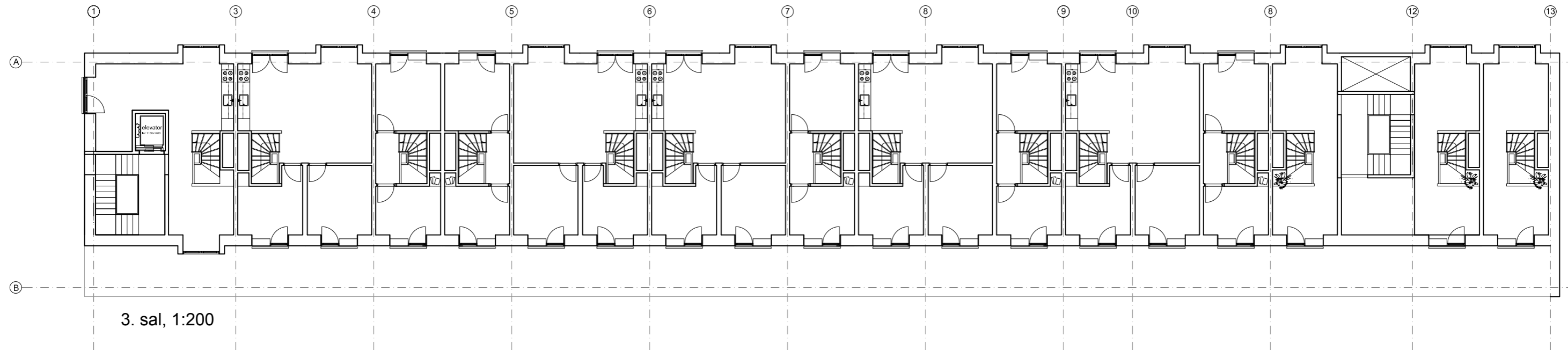
BLOK B, 1. SAL



1. sal, 1:200

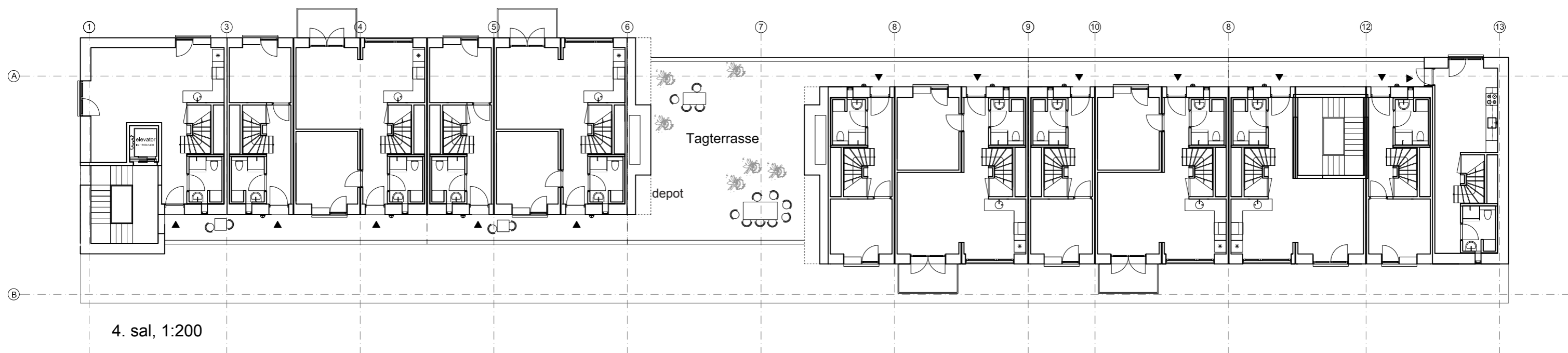
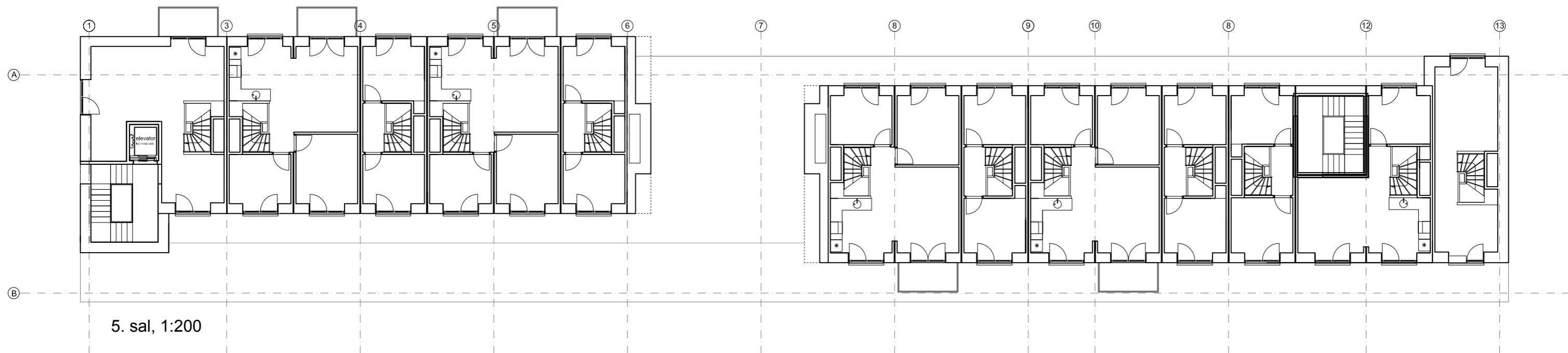
foreløbig etageplan, almene boliger

BLOK B, 2./3. SAL



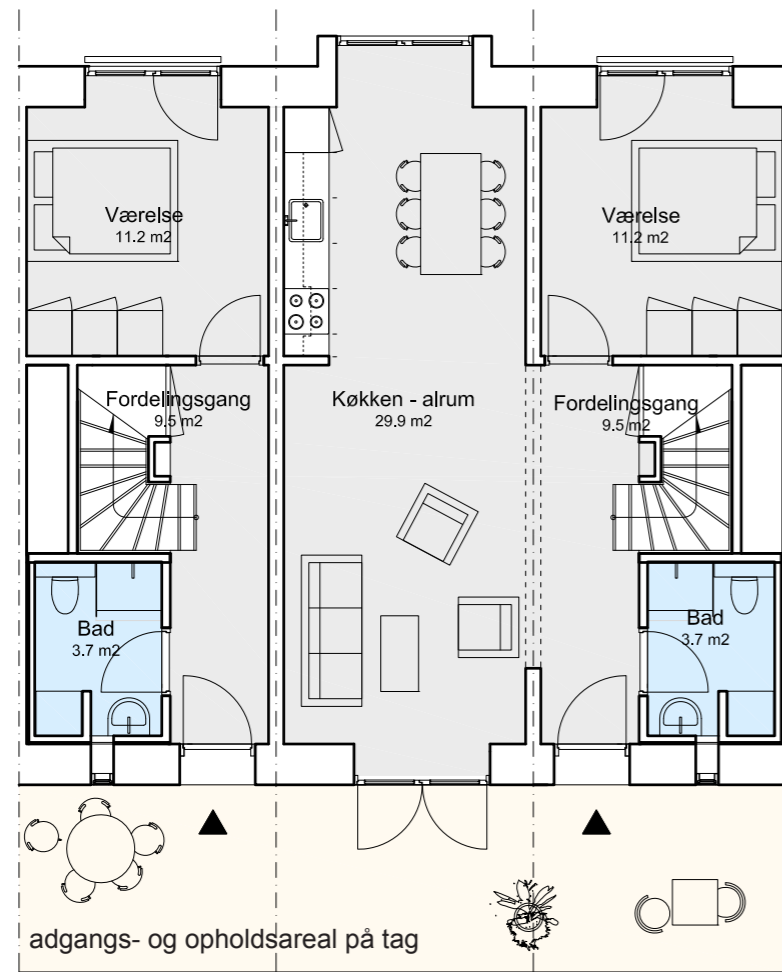
foreløbige etageplaner, almene boliger

BLOK B, 4./5. SAL

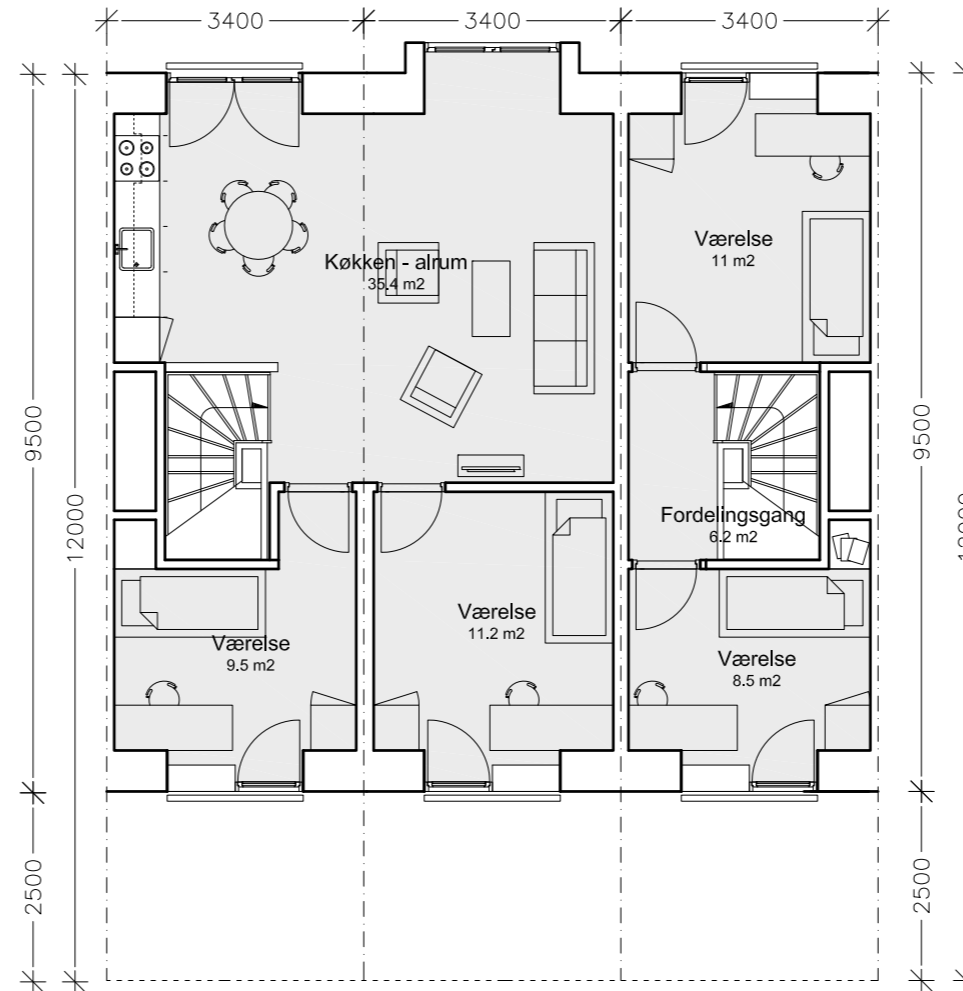


foreløbige etageplaner, almene boliger

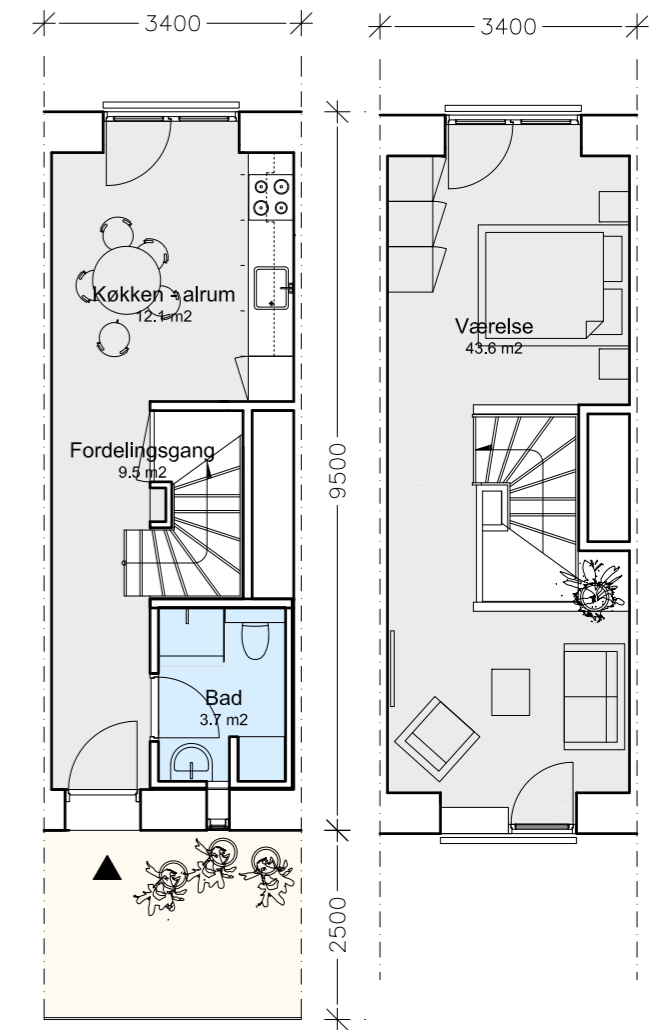
TYPEPLANER, ALMENE BOLIGER !:!00



Type S1/S2 (standardboliger)
Etage 1
Bolig ca 111 m²
Antal værelser 4
1:100

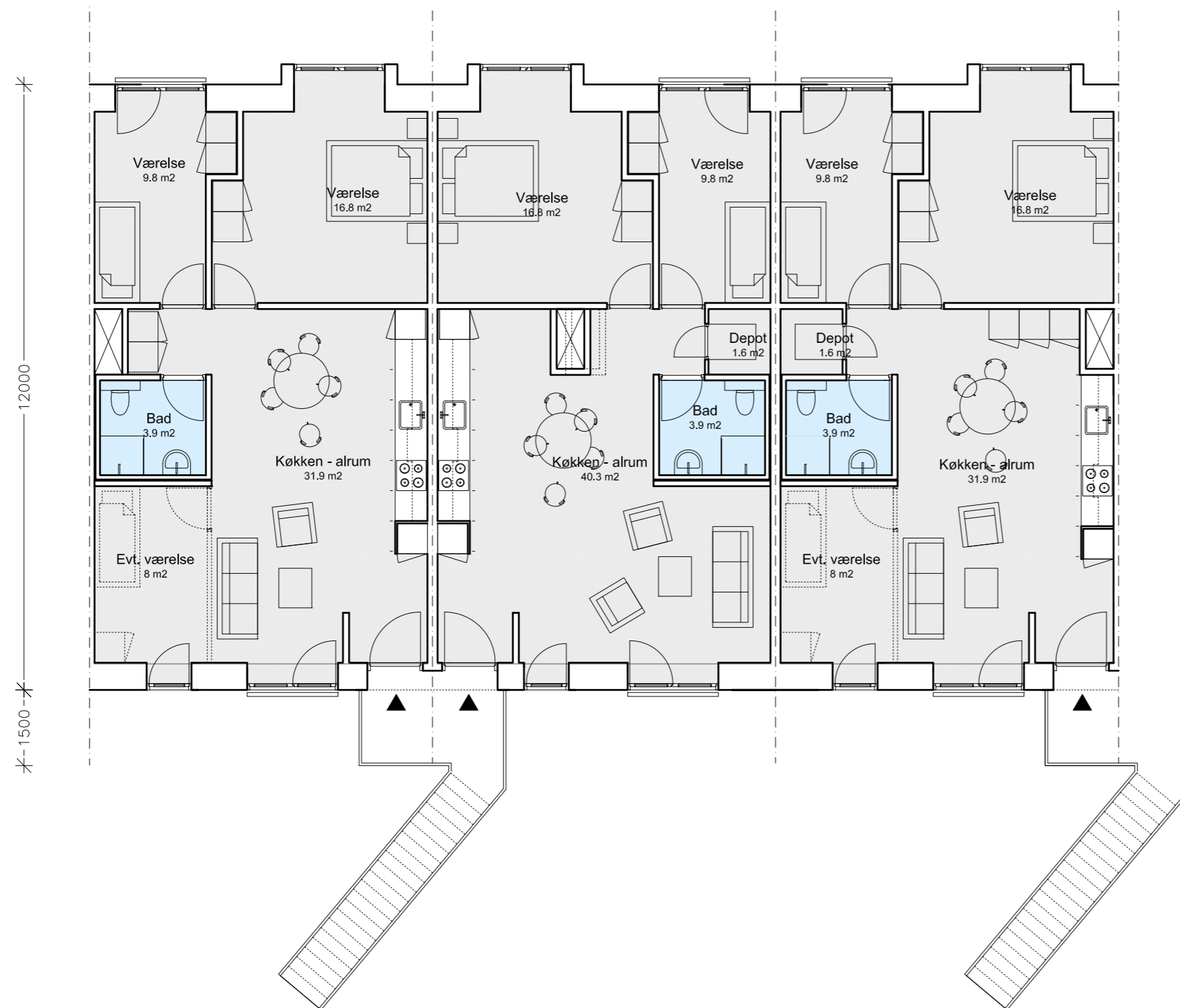


Type S1/S2 (standardboliger)
Etage 2
Bolig ca 111 m²
Antal værelser 4
1:100

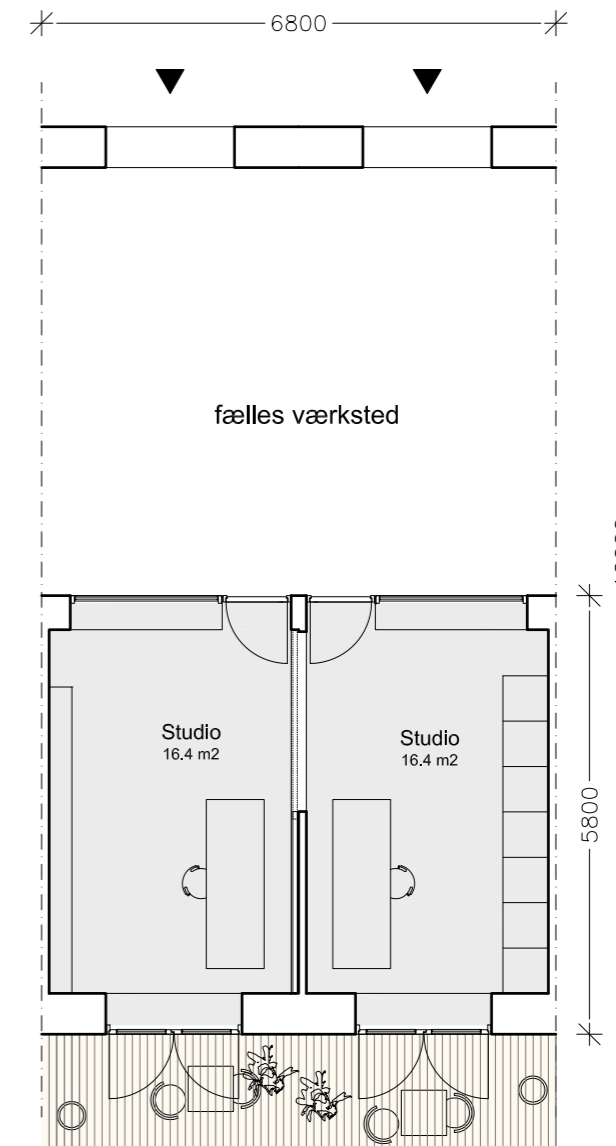


Type S3 (standardbolig)
Etage 1-2
Bolig ca 79 m²
1:100

TYPEPLANER, ALMENE BOLIGER !:!00

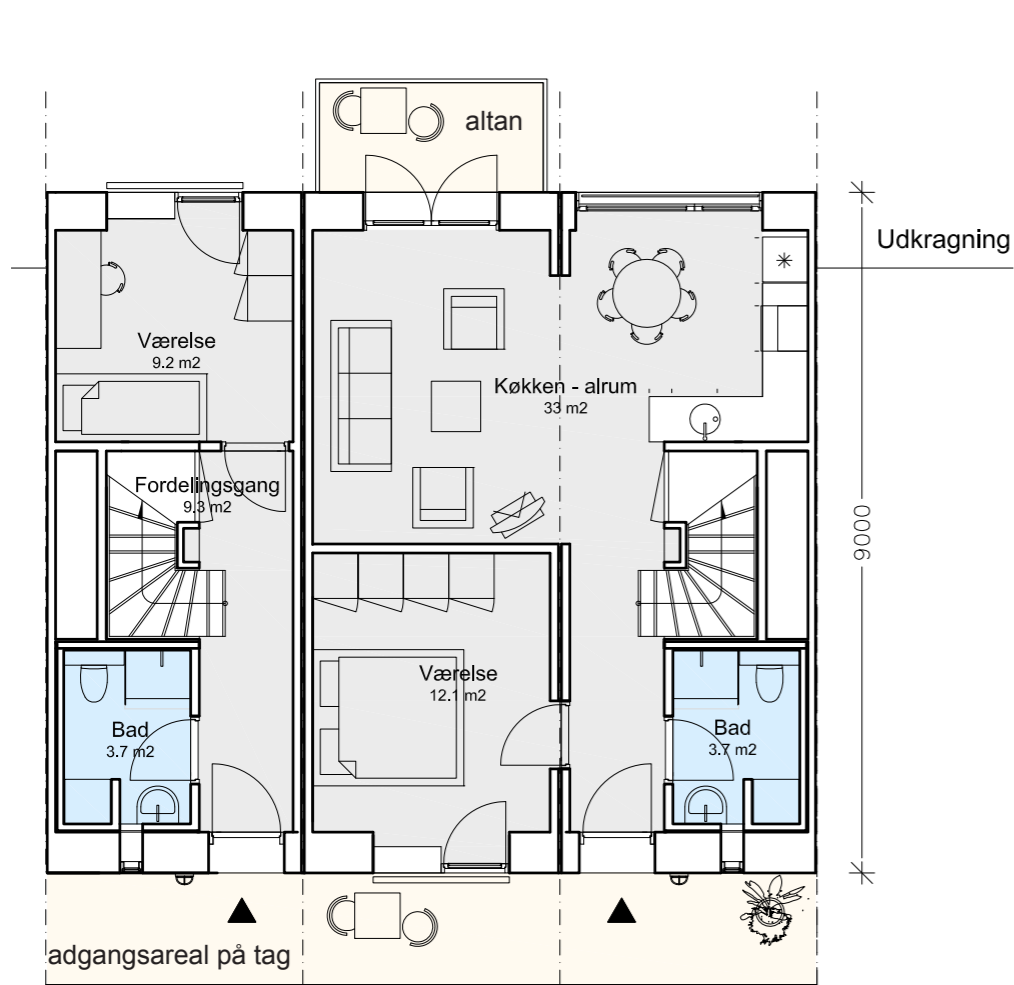


Type SB (studioboliger)
 Boliger ca 96 m² + studio 19 m², i alt 115 m²
 Antal værelser 3 (4) + studio
 1:100

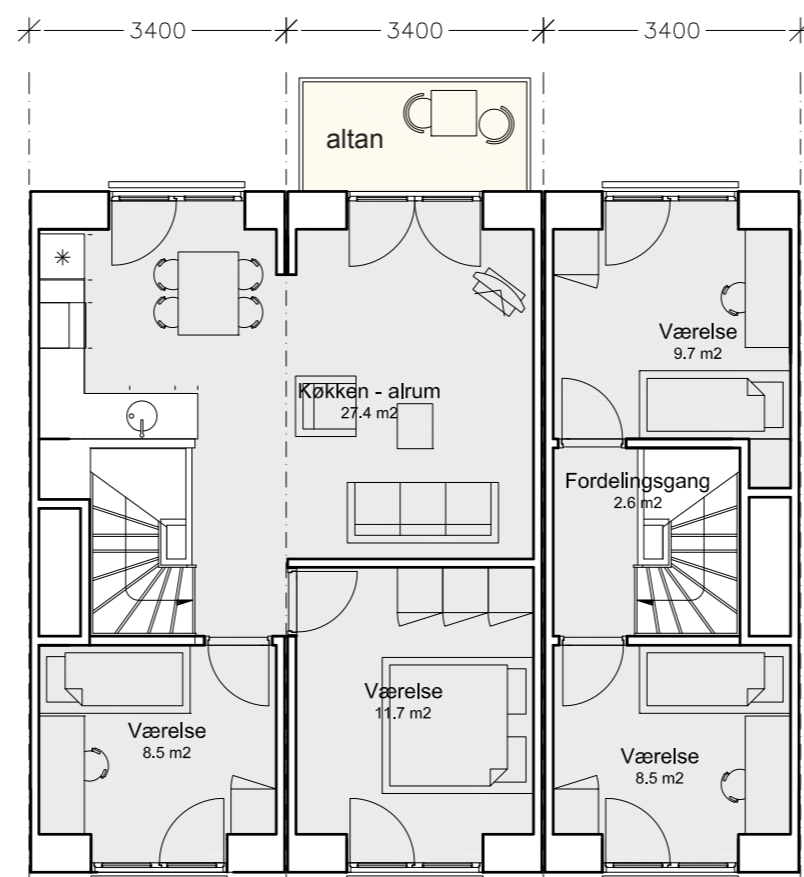


Type studio
 (Stueplan)
 ca. 19 m²
 1:100

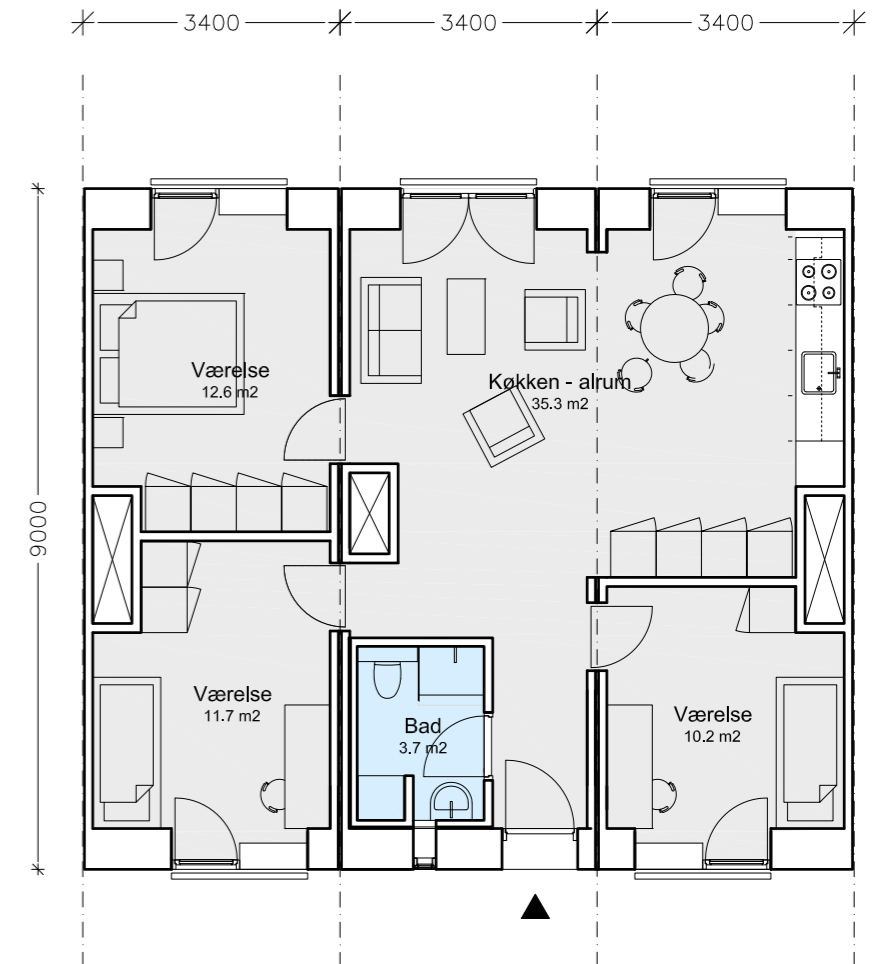
TYPEPLANER, ALMENE BOLIGER !:!00



Type T1/T2 tagboliger,
Etage 1
Boliger ca 106 m²
Antal værelser 4
1:100



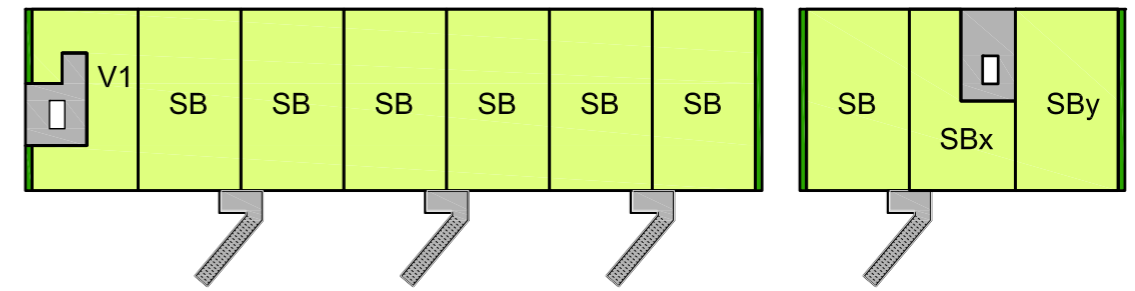
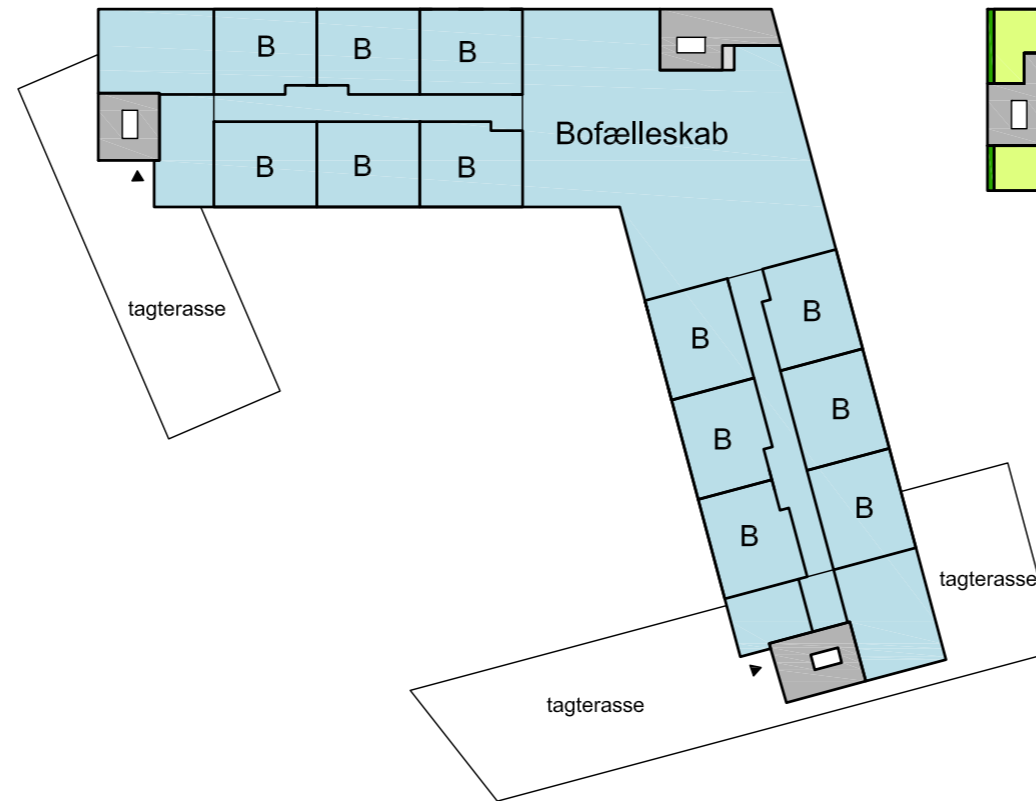
Type T1/T2 tagboliger,
Etage 2
Boliger ca 106 m²
Antal værelser 4
1:100



Type T3 (tagboliger)
Etage 1
Boliger ca 106 m²
Antal værelser 4
1:100

Oversigt over arealer og boligtyper

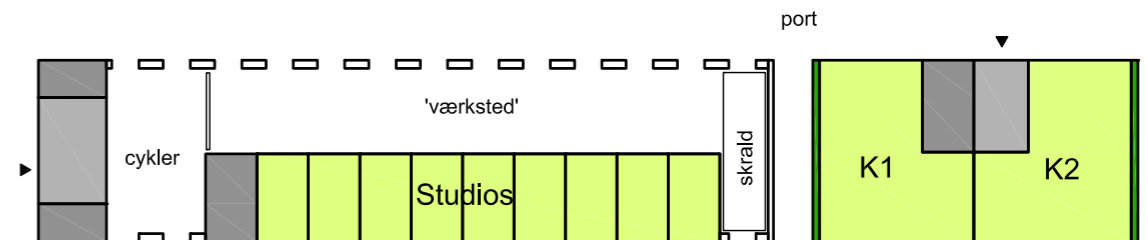
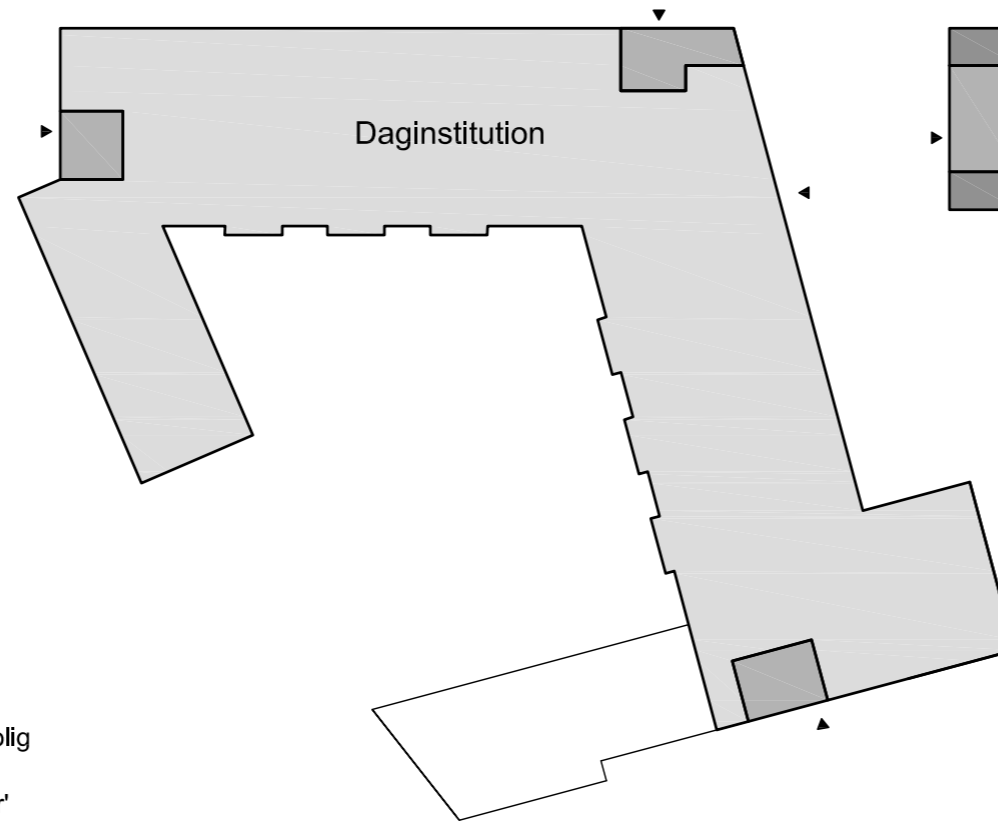
1.sal



1. sal:

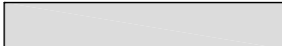
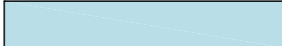




Bofælleskab	947 m2
Bolig	781 m2
Adgangsveje	139 m2
karnapper 29 x 0,6	17 m2
Gavlareal	21 m2
Ialt 1. sal	1905 m2

Stueplan



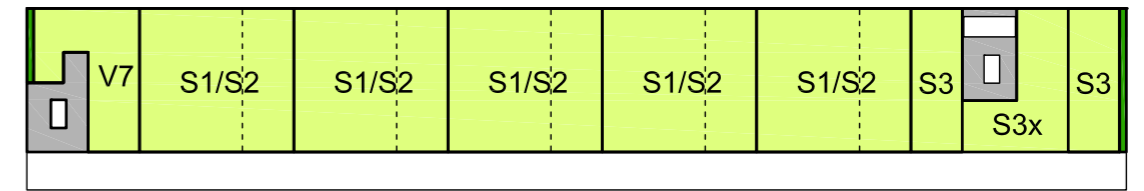
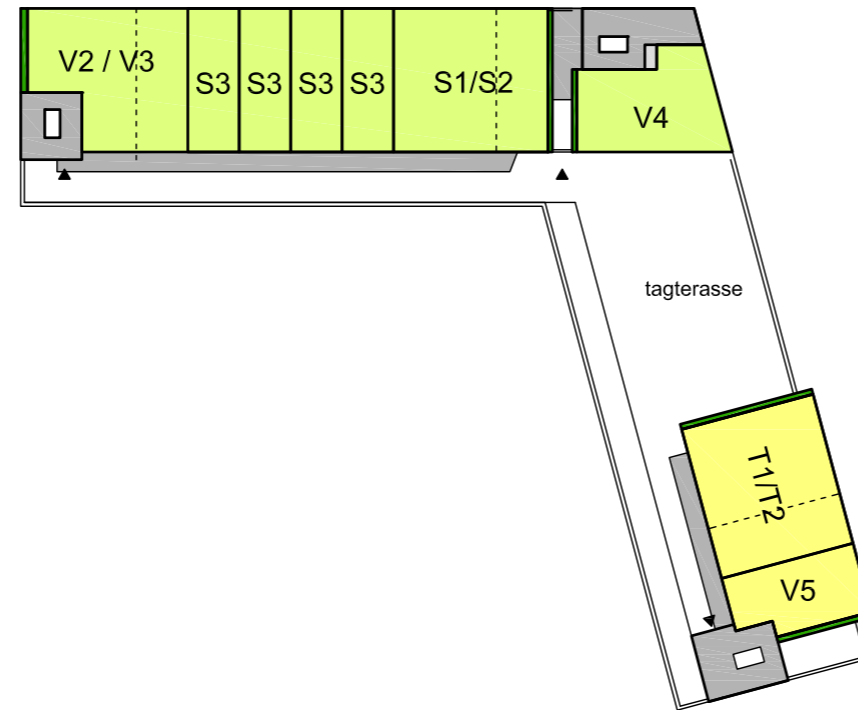
Stueetage:

Daginstitution	1204 m2
Bolig	205 m2
'Studio's	177 m2
Udenomsrum	65 m2
Adgangsveje	117 m2
Gavlareal	11 m2
Ialt stueplan	1779 m2

-  Daginstitution
-  Botilbud
-  Bolig
-  Adgangsareal bolig
-  'Udenomsarealer'
-  Gavlareal bolig

Oversigt over arealer og boligtyper

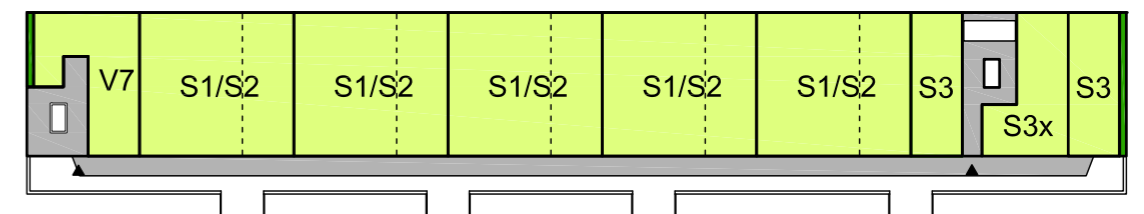
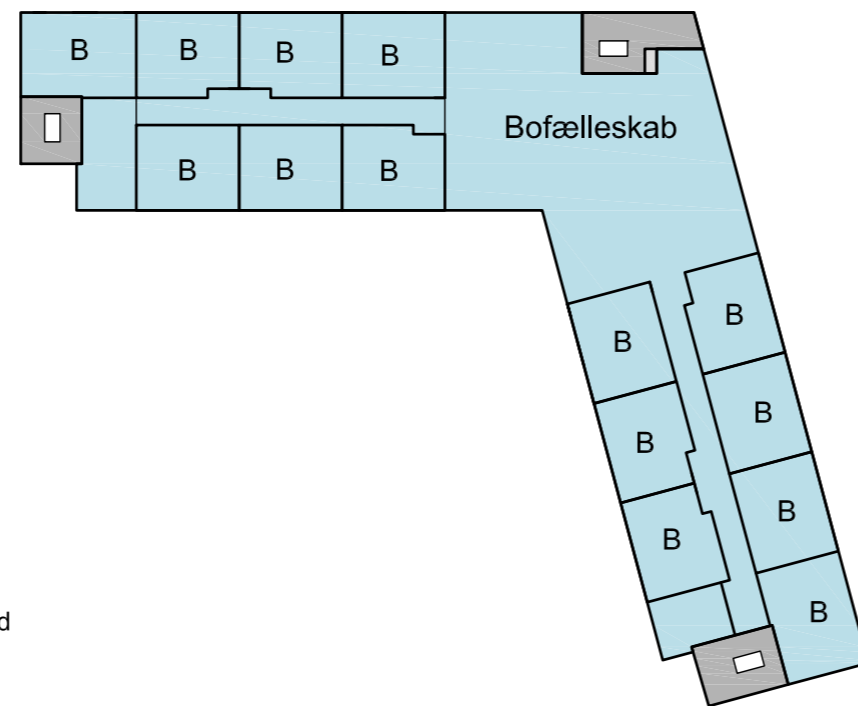
3. sal



3. sal:

Bolig	1011 m2
Tagbolig	131 m2
Adgangsveje	162 m2
Karnapper 25x0,6	15 m2
Gavlareal	19 m2
Ialt	1338 m2

2. sal



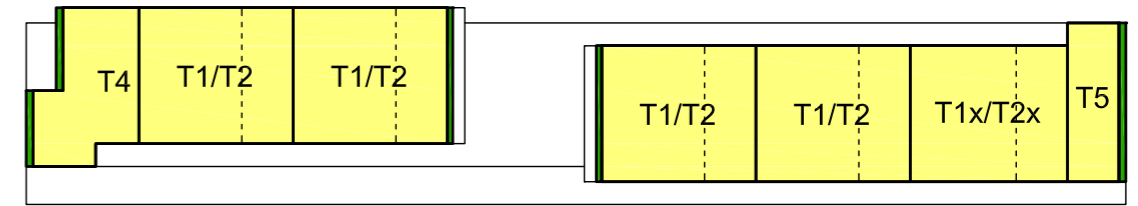
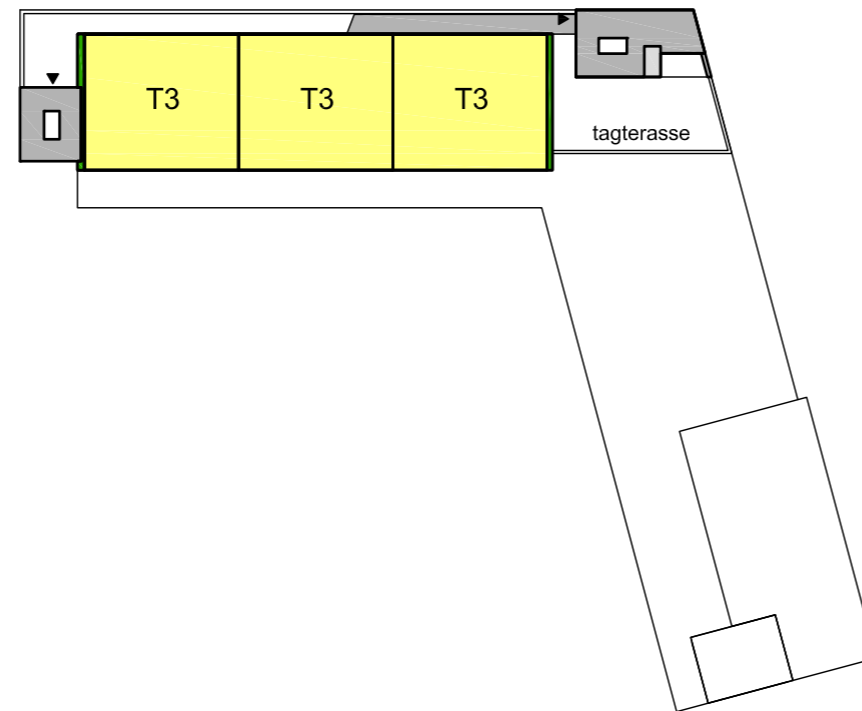
2. sal:

Bofælleskab	947 m2
Karnapper 29 x 0,6	17 m2
Bolig	636 m2
Adgangsveje	188 m2
Gavlareal	7 m2
Ialt 2. sal	1795 m2

- Botilbud
- Bolig
- Adgangsareal bolig
- Gavlareal bolig

Oversigt over arealer og boligtyper

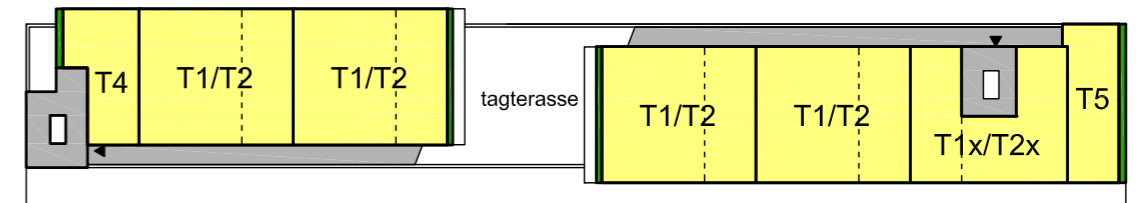
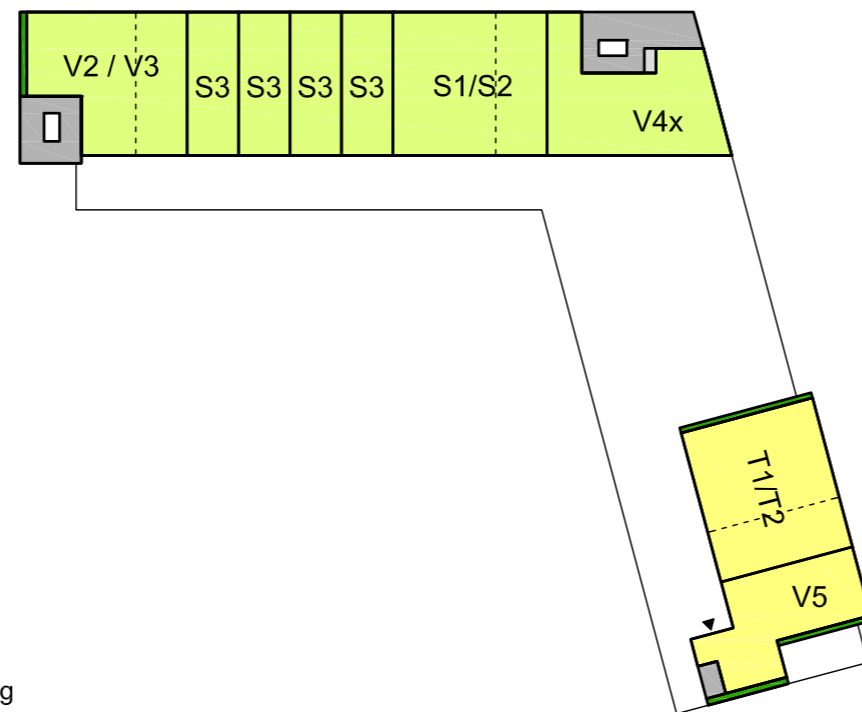
5. sal



5. sal:





Tagbolig	830 m ²
Adgangsveje	67 m ²
Gavlareal	22 m ²
Ialt	919 m²

4. sal



4. sal:

Bolig	390 m ²
Tagbolig	667 m ²
Adgangsveje	145 m ²
Karnapper 10 x 0,6	6 m ²
Gavlareal	23 m ²
Ialt	1231 m²

-  Bolig
-  Tagbolig
-  Adgangsareal bolig
-  Gavlareal bolig

Oversigt over arealer

Blok A, opgørelse

Daginstitution	1204 m ²
Botilbud (blå areal)	1894 m ²
Karnapper Bofælleskab 38 x 0,6=	23 m ²
Almene boliger	1348 m ²
Karnapper Almene boliger	10 m ²
Skakt daginstitution	8 m ²
<u>Adgangsveje</u>	<u>418 m²</u>
Ialt blok A, ca	4905 m ²

Antal lejligheder i Blok A: 16
Andel adgangsareal pr bolig:
(418 - 168) / 18 = 14 m² (forslag)

Blok B, opgørelse

Almene boliger	3580 m ²
Udeomsrum	65 m ²
Karnapper Almene boliger	26 m ²
<u>Adgangsveje</u>	<u>393 m²</u>
Ialt blok B, ca.	4064 m ²

Andele af adgangsareal pr. bolig:

Antal boliger blok A: 16
Antal boliger blok B: 38
Ialt 54 boliger
Ialt adgangsareal: 811 m²
Andel af trappeareal til botilbud = halvdelen af trappearealet i blok A (forslag) = 168 m²
(svarer til 6,5 m² andel af adgangsarealet pr. bolig i botilbud)

Rest af adgangsareal til fordeling mellem almene boliger: 811 - 168 = 643 m²
Andel af adgangsareal til fordeling mellem almene boliger bliver således 643 / 54 = 12 m²
Andel af gavlareal til fordeling mellem almene boliger 103 / 54 = 2 m²

Arealer beregnet pr etage

Stueplan	1779 m ²
1. sal	1905 m ²
2. sal	1795 m ²
3. sal	1338 m ²
4. sal	1231 m ²
<u>5. sal</u>	<u>919 m²</u>
Ialt, ca	8967 m ²

Arealer beregnet på funktioner:

Daginstitution	1212 m ²
Bofælleskab	1894 m ²
Karnapper Bofælleskab 38 x 0,6 =	23 m ²
Almene boliger	4827 m ²
Gavlareal almene boliger	103 m ²
Karnapper almene boliger 55 x 0,6	36 m ²
Fælles adgangsveje	811 m ²
<u>Udenomsrum</u>	<u>65 m²</u>
Ialt, ca	8971 m ²

Overordnet arealfordeling:

1) Daginstitution ialt som vist i forslag, ca.	1210 m ²
2) Botilbud som vist i forslag, ca	2060 m ² *
3) Almene boliger, ca	5570 m ² (svarer til et boligennemsnit på 103 m ²)
<u>4) Udenomsrum, ca</u>	<u>70 m²</u>
Ialt ca	8.910 m ² (dette er excl. evt. areal af karnapper)

Areal af overdækket rum ('fælles værksted'), samt overdækket rum for cykler udgør ca. 300 m². Der skal søges dispensation for at inkludere dette areal i grundens byggeret.

* Andel af fælles adgangsareal til botilbud foreslås at udgøre halvdelen af trappearealet i blok A. Dette skal afklares for præcise arealangivelser

NB Alle tal er foreløbige og omtrentlige