

Illustrationer af fremtidige forhold

Gammel Jernbanevej 13, 25 00 Valby



Kig fra Gammel Jernbanevej



Kig fra Valby Kirkevej



Kig fra Gammel Jernbanevej



Oversigt





OPGØRELSE FRIARALER

| | |
|-----------------------|------------|
| Matrikel: | 914 kvm. |
| Fodaftryk bygning: | 364 kvm. |
| Friareal tagterasser: | 275 kvm. |
| Friareal terræn: | 349 kvm. |
| Sum friarealer: | 624 kvm. |
| Parkeringsareal: | 201 kvm. |
| Boligetagemeter: | 1.535 kvm. |

Friarealprocent: 41 %

NOTE

Alle mål anført i mm.

LICHTENBERG LIVING

Ved Arkitekt MAA Michael de Lichtenberg

Emne **Plan 0 - Indgangsniveau - Situationsplan**
MYNDIGHEDSPROJEKT

14 boliger
Glammel Jernbanevej 13, 2500 Valby

Tegning nr. **(99) 02**

Mål 1:100

Matrikel 14aa X-ref map01 Sag 13079 Dato 22.12.2014 Revision 04.03.2015

Ryegade 19A, 3.sal ▪ 2200 København N ▪ + (45) 26 74 56 15 ▪ kontakt@livli.dk ▪ www.livli.dk



LICHTENBERG LIVING

Ved Arkitekt MAA Michael de Lichtenberg

14 boliger

Glammel Jernbanevej 13, 2500 Valby

Emne **Facade vest**
MYNDIGHEDSPROJEKT

Tegning nr. **(99) 23**

Mål 1:100

Matrikel 14aa

X-ref map01 Sag 13079

Dato 22.12.2014 Revision -

Ryesgade 19A, 3.sal

2200 København N

+ (45) 26 74 56 15

kontakt@livli.dk

www.livli.dk



LICHTENBERG LIVING

Ved Arkitekt MAA Michael de Lichtenberg

14 boliger

Gammel Jernbanevej 13, 2500 Valby

Emne **Facade syd**
MYNDIGHEDSPROJEKT

Tegning nr. **(99) 22**

Mål **1:100**

Matrikel 14aa

X-ref map01 Sag 13079

Dato 22.12.2014 Revision -

Ryegade 19A, 3.sal

2200 København N

+ (45) 26 74 56 15

kontakt@livli.dk

www.livli.dk



LICHTENBERG LIVING

Ved Arkitekt MAA Michael de Lichtenberg

14 boliger

Gammel Jernbanevej 13, 2500 Valby

Emne **Facade øst**
MYNDIGHEDSPROJEKT

Tegning nr. **(99) 21**

Mål **1:100**

Matrikel 14aa

X-ref map01 Sag 13079

Dato 22.12.2014 Revision -

Ryesgade 19A, 3.sal

2200 København N

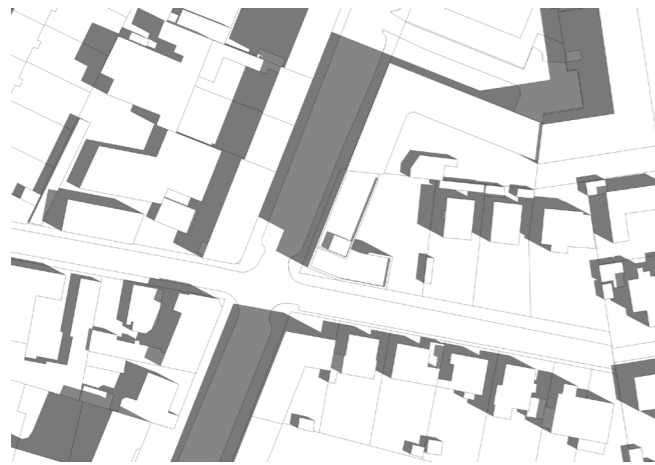
+ (45) 26 74 56 15

kontakt@livli.dk

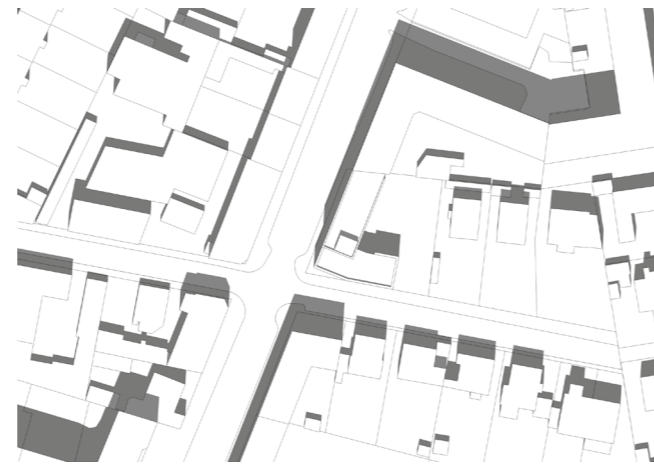
www.livli.dk

Skyggediagrammer for fremtidige forhold

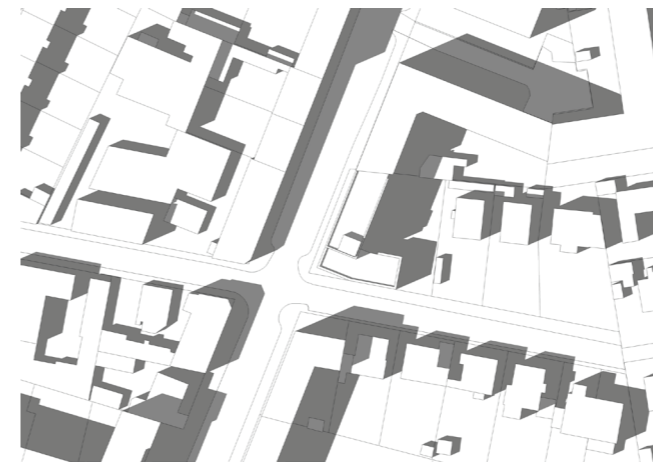
Gammel Jernbanevej 13, 25 00 Valby



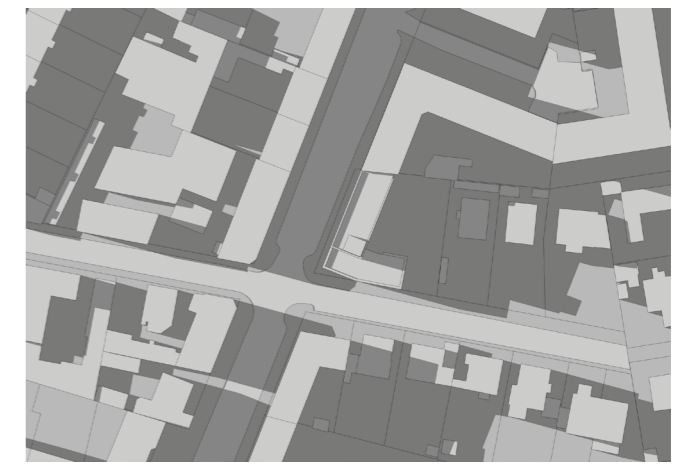
55.66560N, 12.520600W
21. JUNI, 09:00



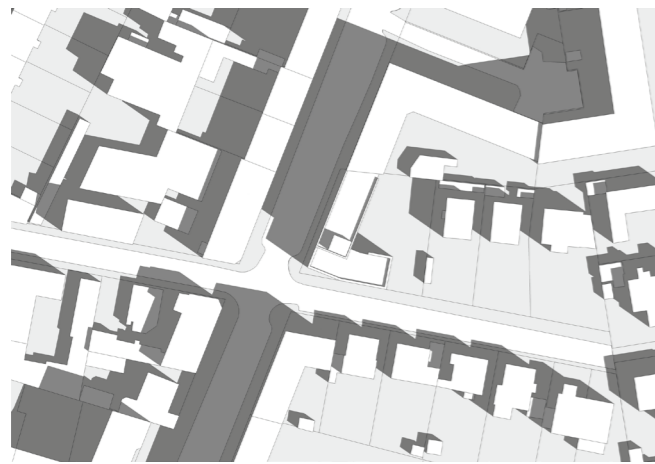
55.66560N, 12.520600W
21. JUNI, 12:00



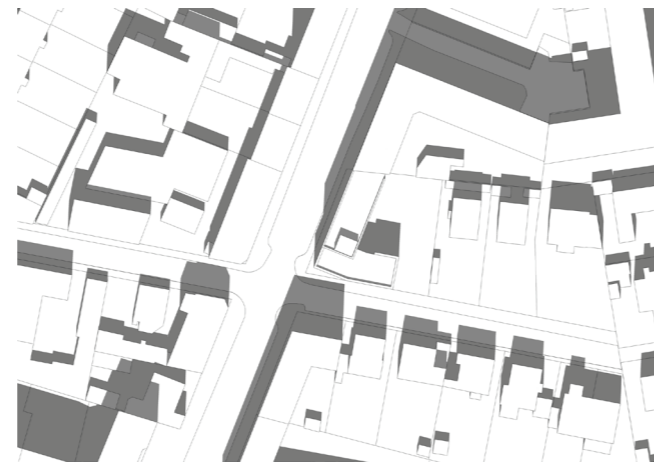
55.66560N, 12.520600W
21. JUNI, 15:00



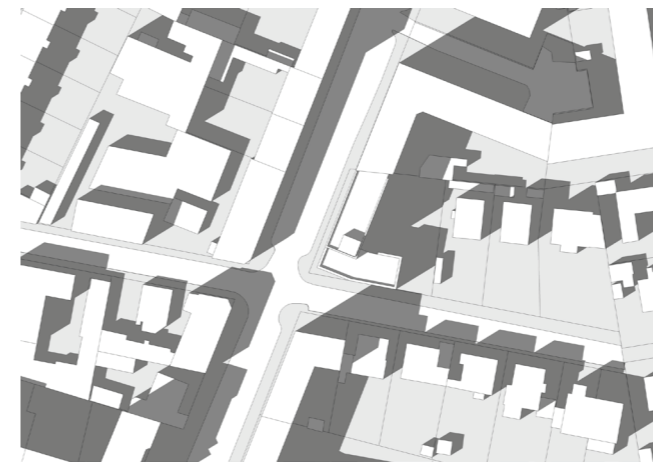
55.66560N, 12.520600W
21. JUNI, 18:00



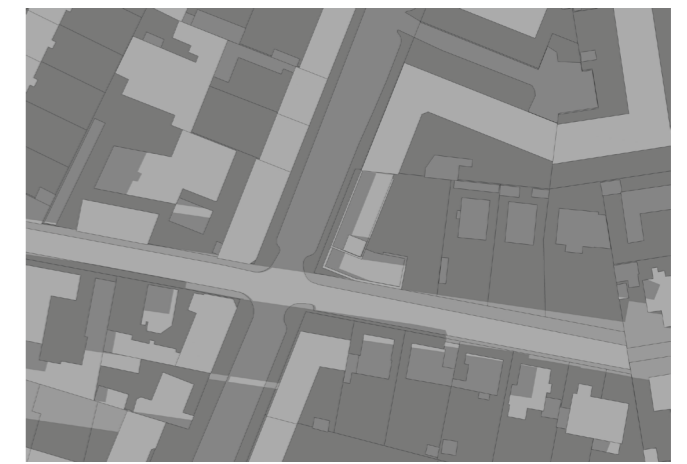
55.66560N, 12.520600W
21. SEPTEMBER, 09:00



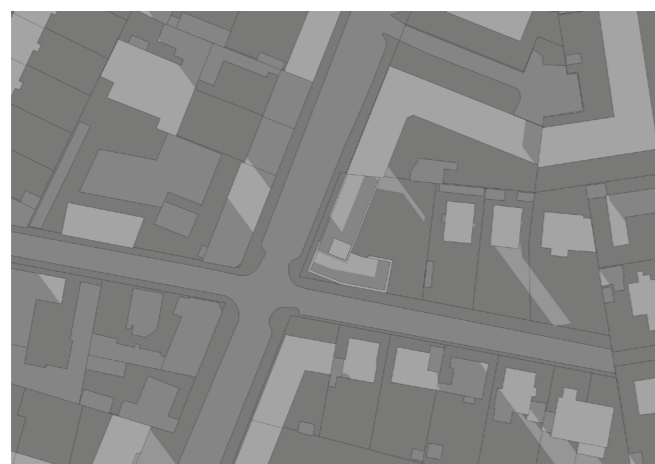
55.66560N, 12.520600W
21. SEPTEMBER, 12:00



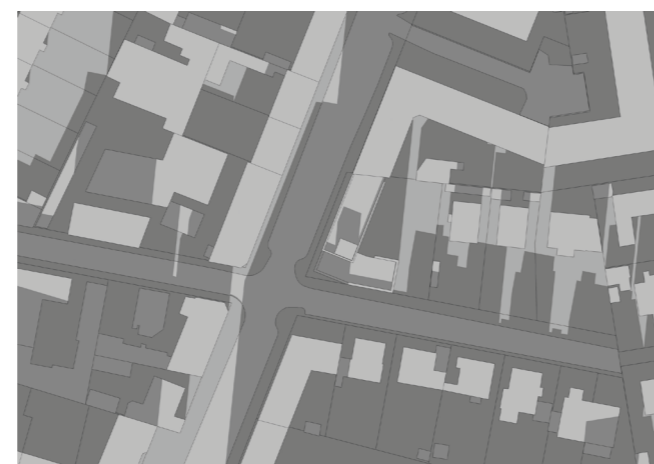
55.66560N, 12.520600W
21. SEPTEMBER, 15:00



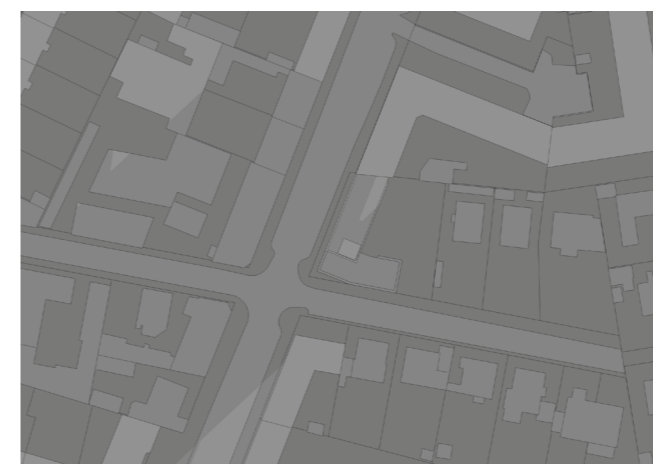
55.66560N, 12.520600W
21. SEPTEMBER, 18:00



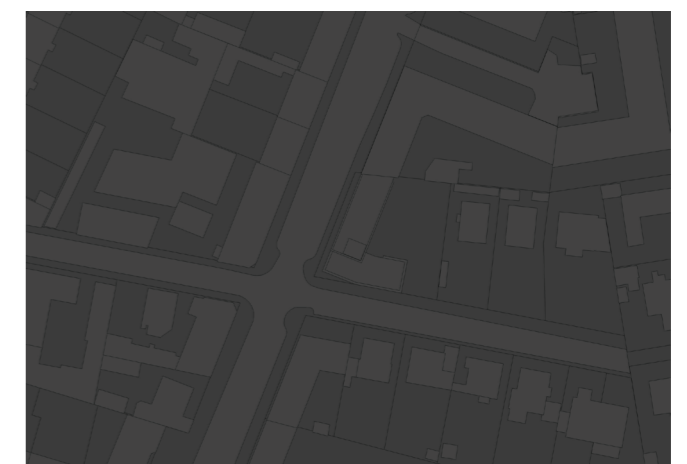
55.66560N, 12.520600W
21. DECEMBER, 09:00



55.66560N, 12.520600W
21. DECEMBER, 12:00



55.66560N, 12.520600W
21. DECEMBER, 15:00



55.66560N, 12.520600W
21. DECEMBER, 18:00

Skyggediagrammer for eksisterende forhold

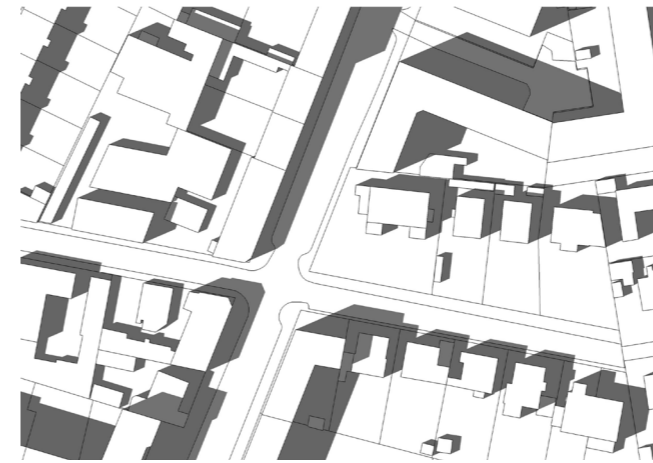
Gammel Jernbanevej 13, 25 00 Valby



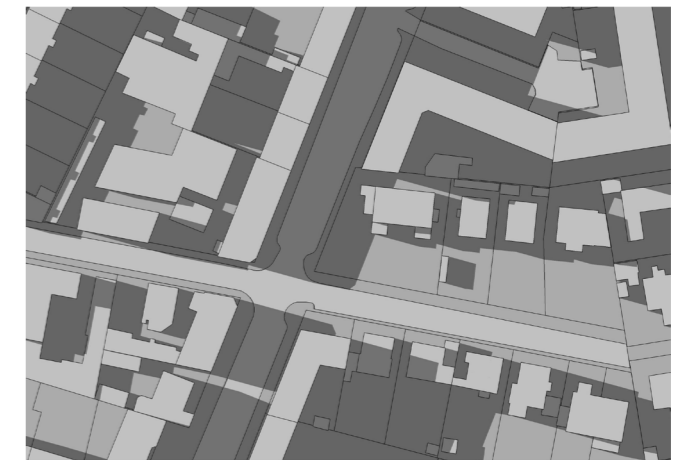
55.66560N, 12.520600W
21. JUNI, 09:00



55.66560N, 12.520600W
21. JUNI, 12:00



55.66560N, 12.520600W
21. JUNI, 15:00



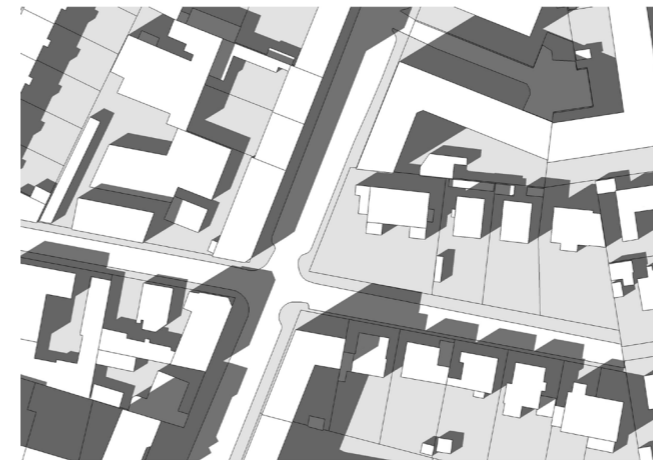
55.66560N, 12.520600W
21. JUNI, 18:00



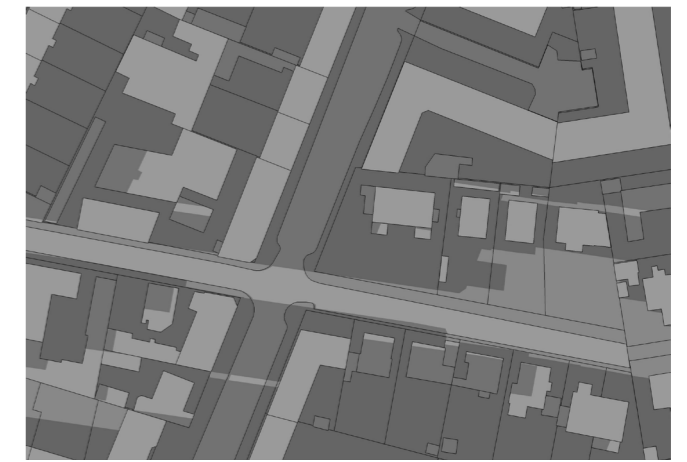
55.66560N, 12.520600W
21. SEPTEMBER, 09:00



55.66560N, 12.520600W
21. SEPTEMBER, 12:00



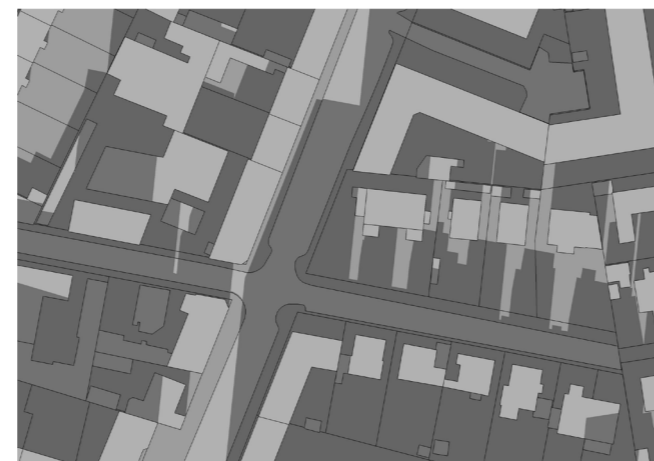
55.66560N, 12.520600W
21. SEPTEMBER, 15:00



55.66560N, 12.520600W
21. SEPTEMBER, 18:00



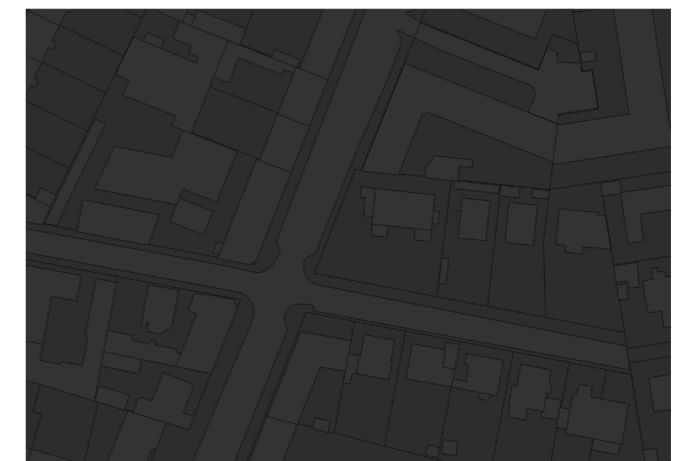
55.66560N, 12.520600W
21. DECEMBER, 09:00



55.66560N, 12.520600W
21. DECEMBER, 12:00



55.66560N, 12.520600W
21. DECEMBER, 15:00

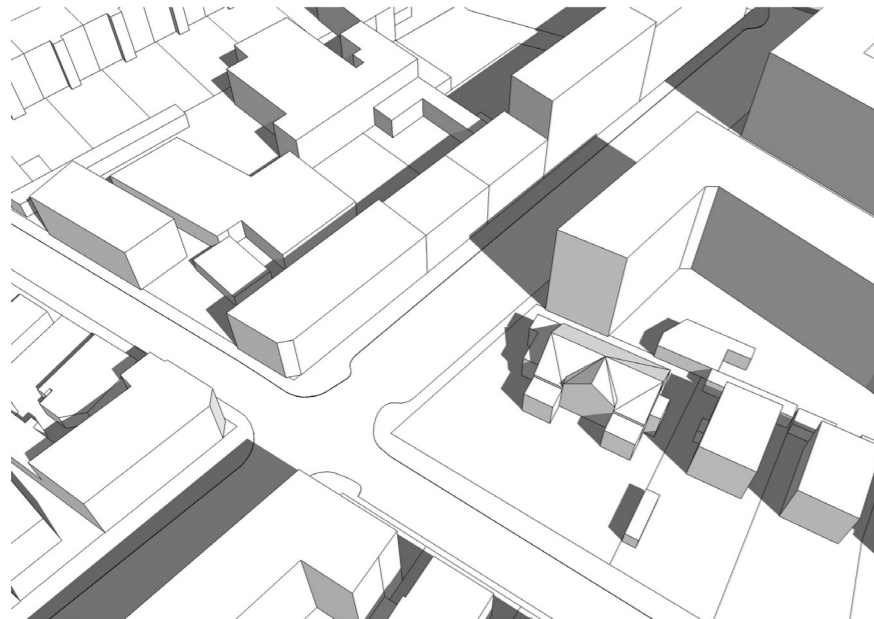


55.66560N, 12.520600W
21. DECEMBER, 18:00

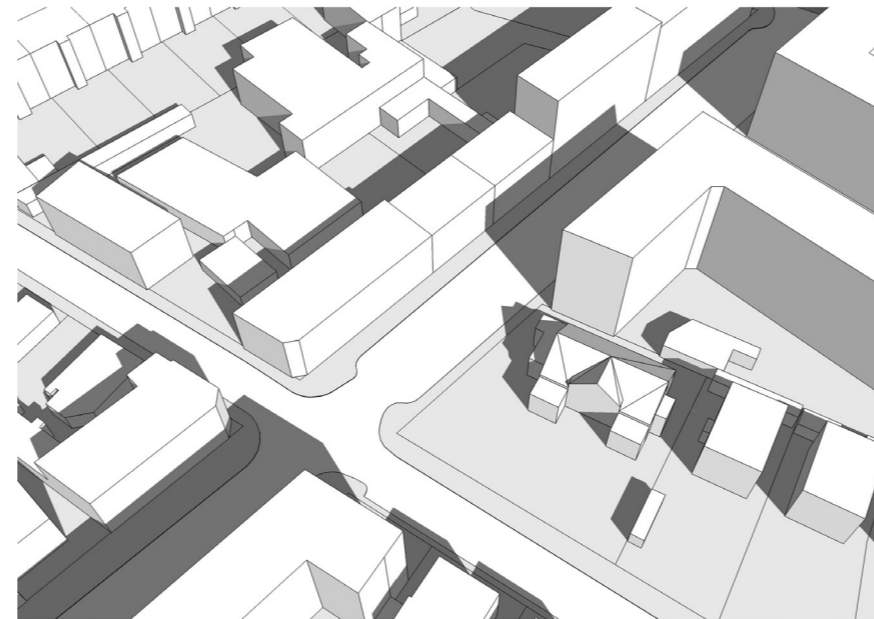
Skyggediagrammer for morgensol på Gl. Jernbanevej

Gammel Jernbanevej 13, 25 00 Valby

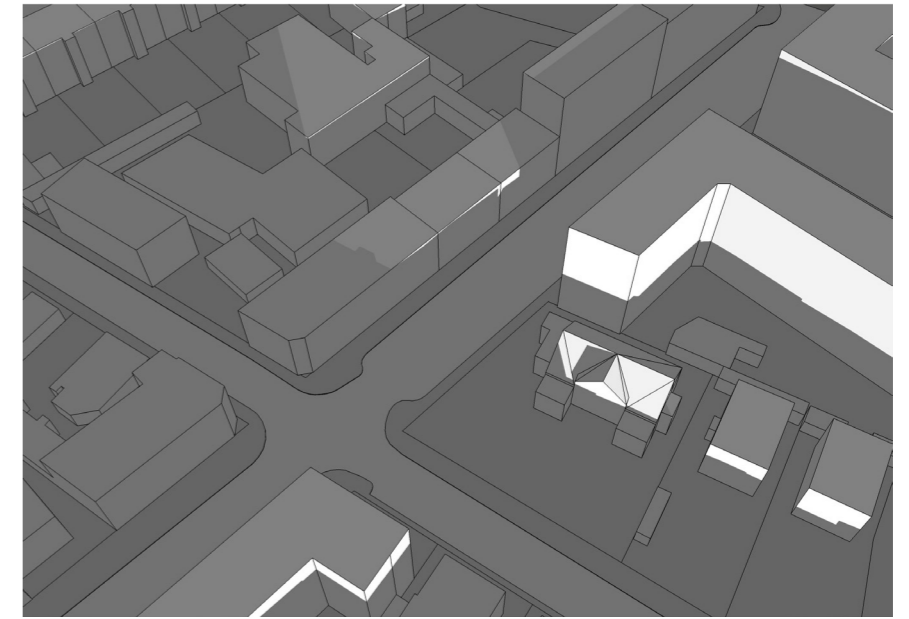
EKSITERENDE FORHOLD



55.66560N, 12.520600W
21. JUNI, 09:00

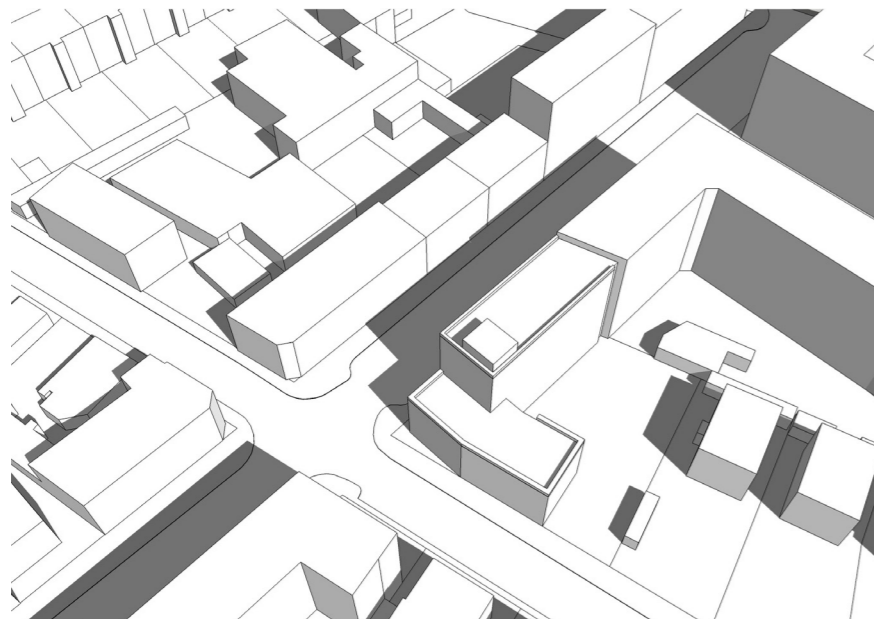


55.66560N, 12.520600W
21. SEPTEMBER, 09:00

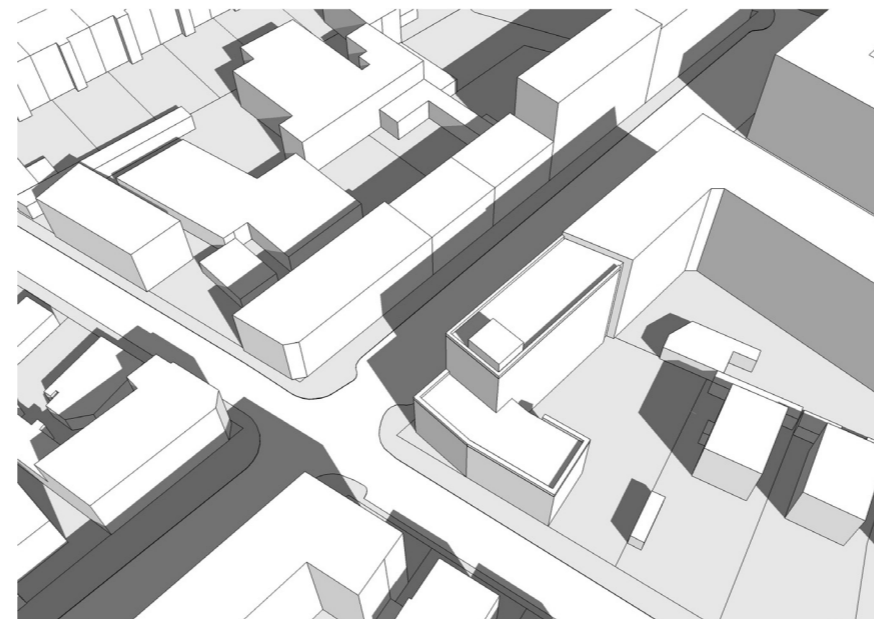


55.66560N, 12.520600W
21. DECEMBER, 09:00

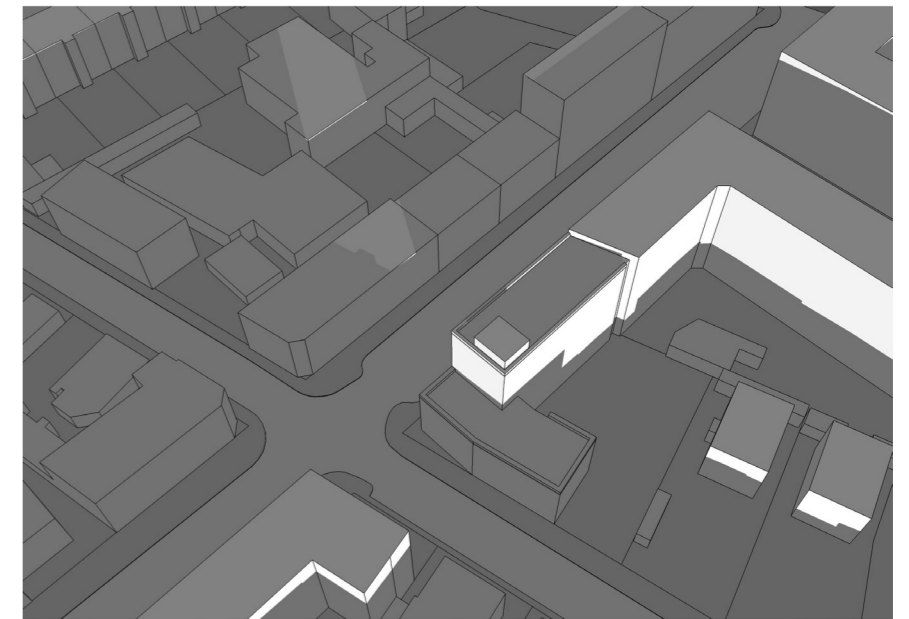
FREMTIDIGE FORHOLD



55.66560N, 12.520600W
21. JUNI, 09:00



55.66560N, 12.520600W
21. SEPTEMBER, 09:00

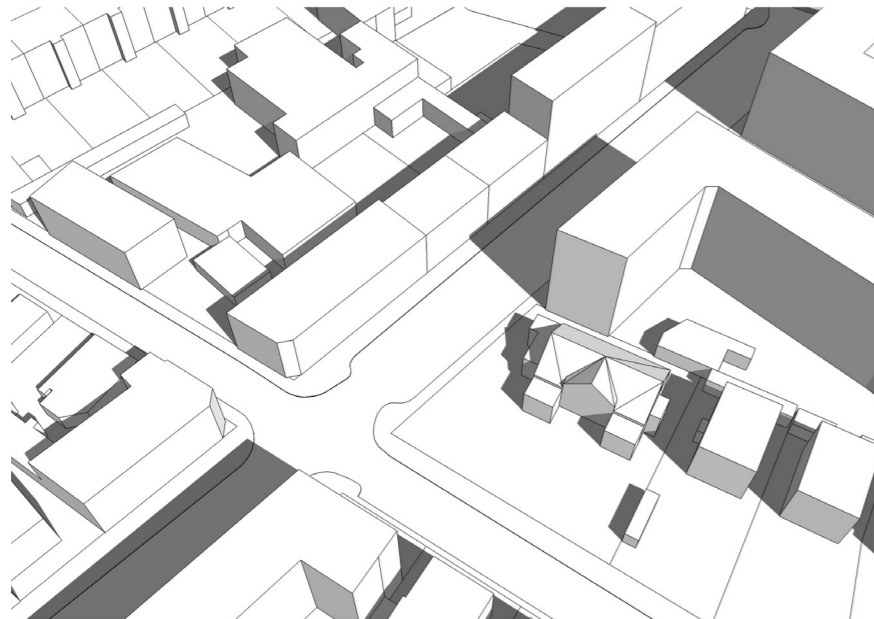


55.66560N, 12.520600W
21. DECEMBER, 09:00

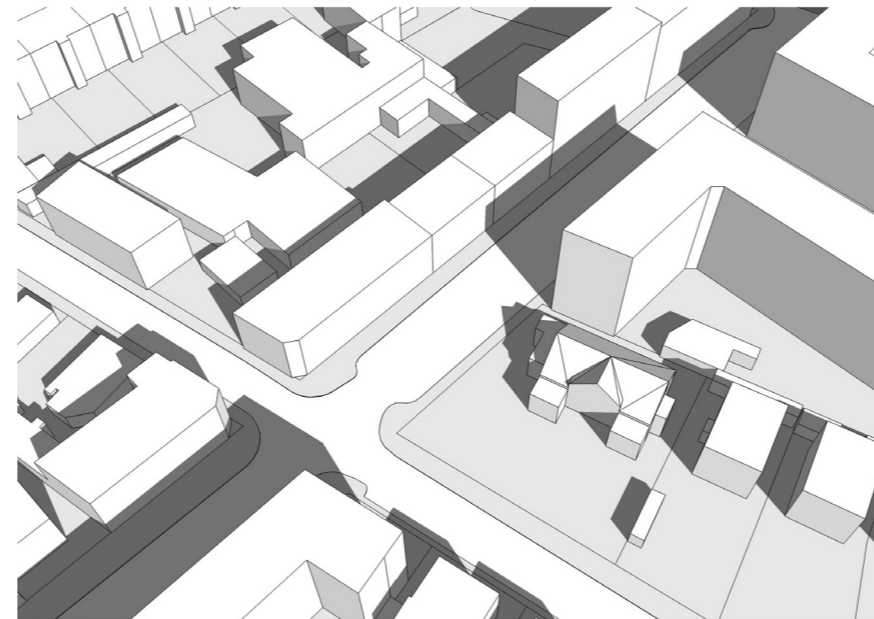
Skyggediagrammer for morgensol på Gl. Jernbanevej

Gammel Jernbanevej 13, 25 00 Valby

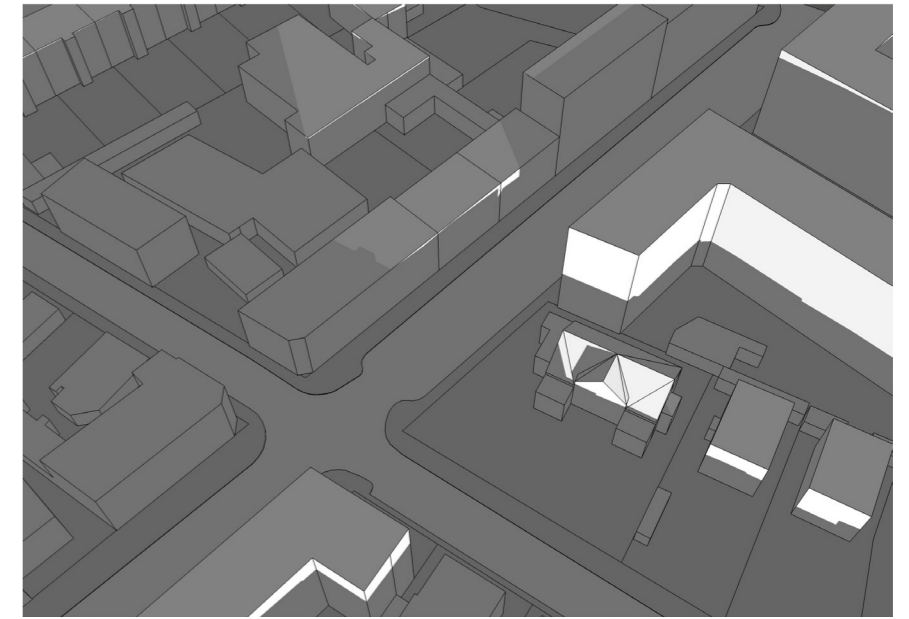
EKSITERENDE FORHOLD



55.66560N, 12.520600W
21. JUNI, 09:00

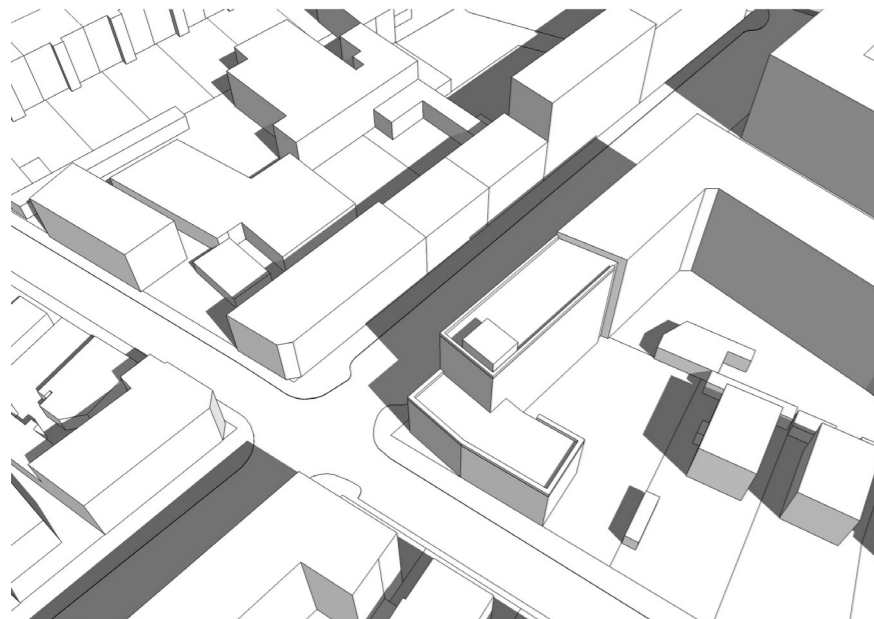


55.66560N, 12.520600W
21. SEPTEMBER, 09:00

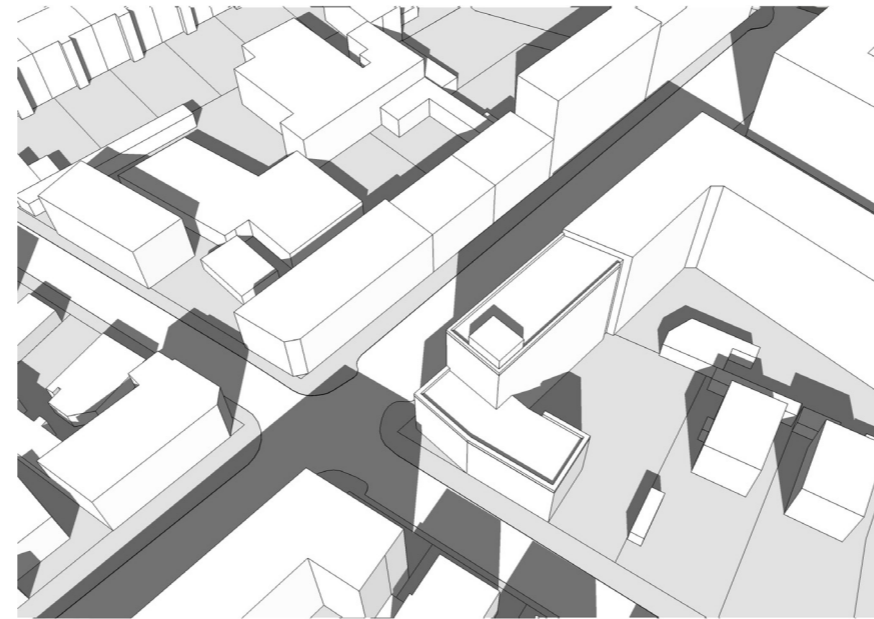


55.66560N, 12.520600W
21. DECEMBER, 09:00

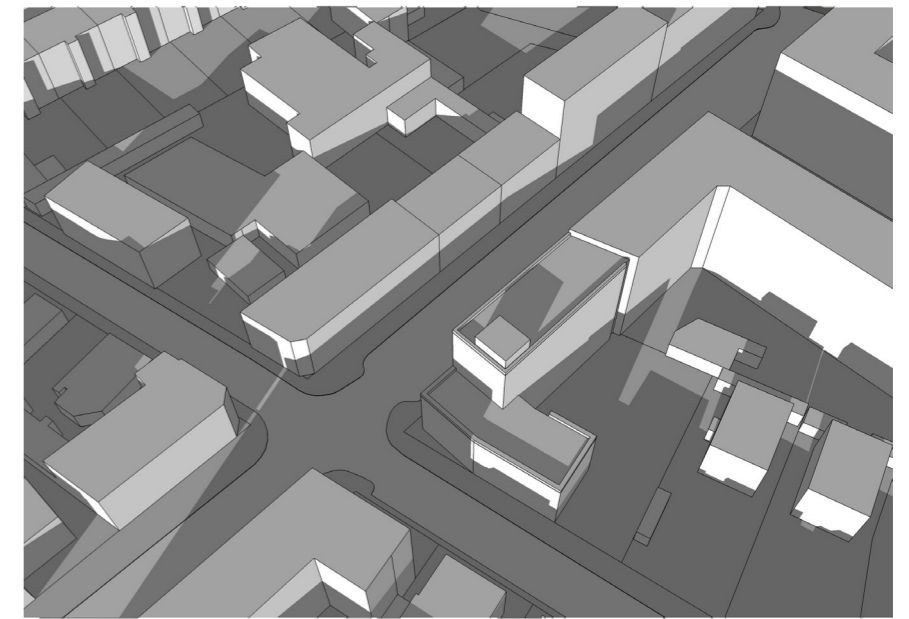
FREMTIDIGE FORHOLD



55.66560N, 12.520600W
21. JUNI, 09:00



55.66560N, 12.520600W
21. SEPTEMBER, 10:40



55.66560N, 12.520600W
21. DECEMBER, 12:00